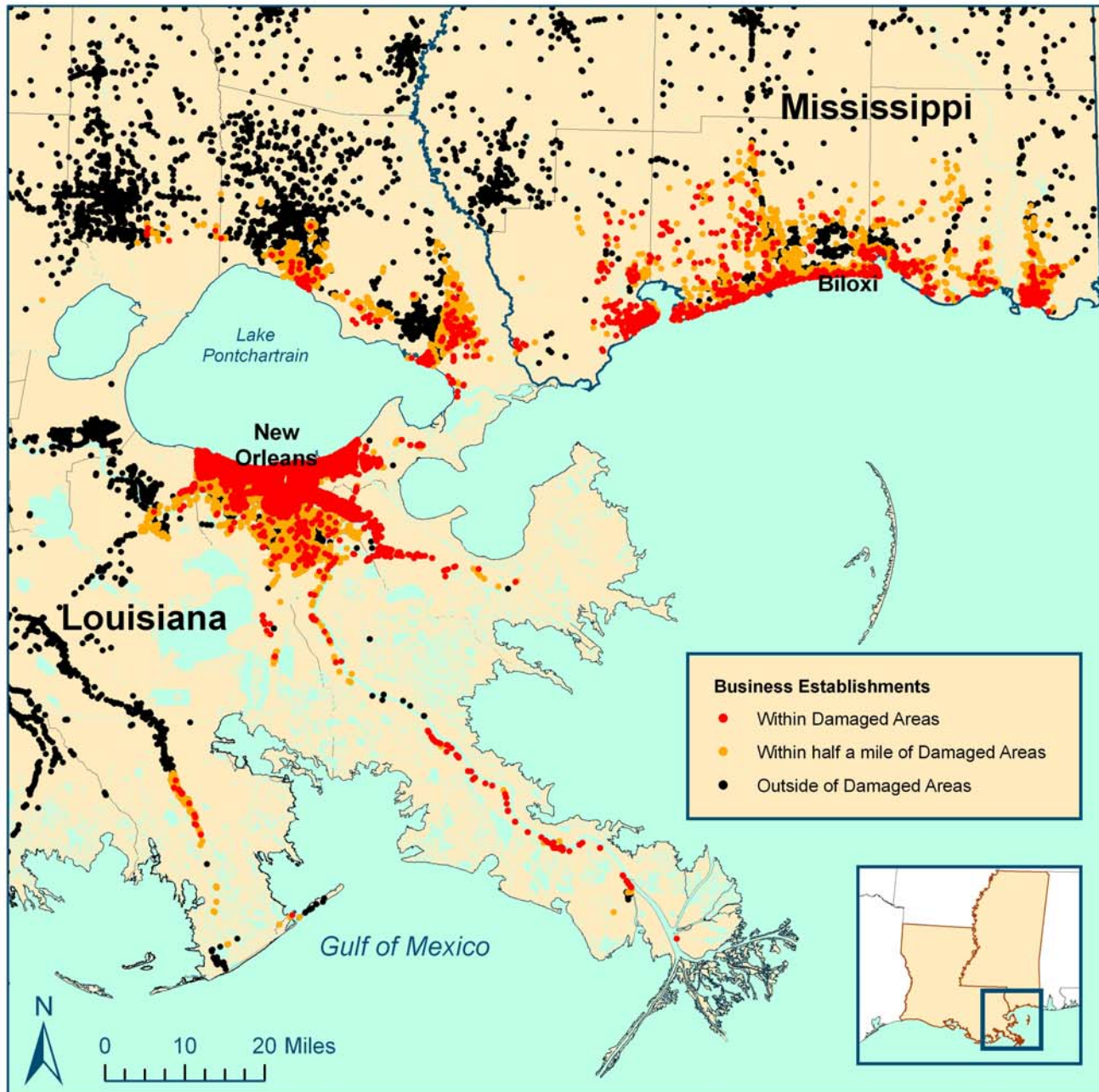


# Business Establishments within Katrina-Damaged Areas as Identified by FEMA Louisiana and Mississippi



## Louisiana

17% of Louisiana's employment was within the FEMA Identified Damage Areas

Business Establishments	Employees	Quarterly Wages
18,997	316,063	\$3,047,142,670

27% was inside or within half a mile of the FEMA Identified Damage Areas

Business Establishments	Employees	Quarterly Wages
31,133	499,650	\$4,668,063,720

## Mississippi

5% of Mississippi's employment was within the FEMA Identified Damage Areas

Business Establishments	Employees	Quarterly Wages
3,352	55,081	\$419,139,867

13% was inside or within half a mile of the FEMA Identified Damage Areas

Business Establishments	Employees	Quarterly Wages
7,718	136,406	\$1,082,573,551

## Data source:

Quarterly Census of Employment and Wages (QCEW), developed through a cooperative program between the states and the U.S. Bureau of Labor Statistics. FEMA Imagery Derived Assessment Damage Areas September 6, 2005, [www.gismaps.fema.gov](http://www.gismaps.fema.gov)

## Data notes:

Employment is from December 2004. Quarterly Wages are the total paid for the Fourth Quarter of 2004. Data are adjusted to include business establishments for whom accurate addresses are not available.

## Cartography by:

State of California  
Employment Development Department  
[www.labormarketinfo.ca.gov](http://www.labormarketinfo.ca.gov)  
September 2005

