

For release 10:00 a.m. (EDT) Wednesday, December 9, 2009

USDL-09-1502

Technical Information: (202) 691-5618 • dipsweb@bls.gov • www.bls.gov/lpc
Media Contact: (202) 691-5902 • PressOffice@bls.gov

**PRODUCTIVITY AND COSTS BY INDUSTRY:
MANUFACTURING INDUSTRIES, 2007**

Labor productivity – defined as output per hour – rose in 53 percent of detailed manufacturing industries in 2007, the U.S. Bureau of Labor Statistics reported today. This was about unchanged from the proportion that recorded productivity increases the previous year. (See table 1.) **Unit labor costs** declined in 19 percent of the industries.

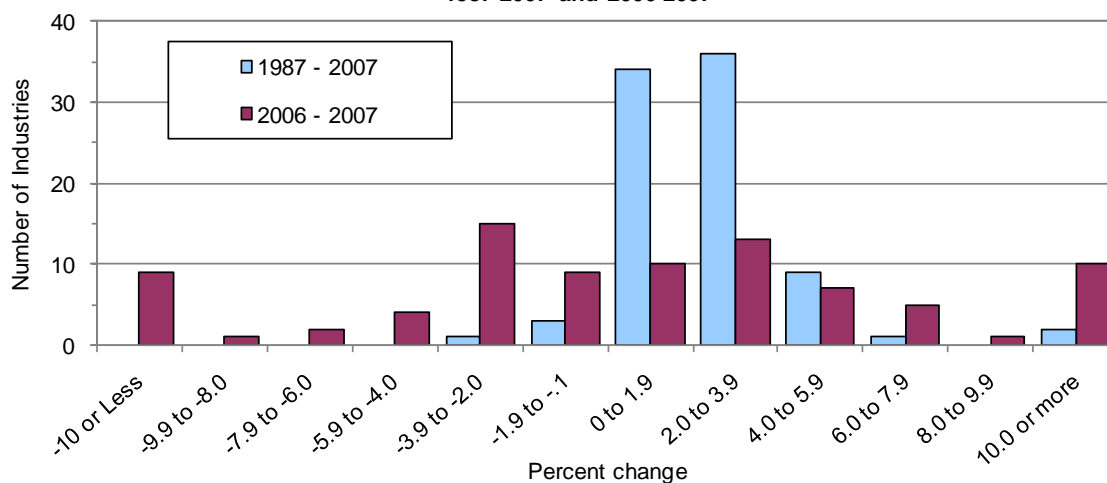
Output fell and hours declined in more industries in 2007 than in 2006. Output fell in 58 percent of the 86 4-digit NAICS industries in 2007 and hours fell in 63 percent. More industries experienced sharp increases or large declines in productivity in 2007 than in the previous year. Productivity rose by 10 percent or more in ten industries and declined by 10 percent or more in nine industries. Two of the ten largest detailed industries by employment size – aerospace products and parts manufacturing and semiconductors and electronic components manufacturing – posted double-digit output and productivity growth in 2007.

Unit labor costs fell in 16 of the 86 manufacturing industries in 2007. (See table 1.) Unit labor costs reflect the total labor costs required to produce a unit of output. Increases in labor productivity help to offset increases in hourly compensation and thus limit increases in unit labor costs.

This report presents data for the manufacturing industries included in the attached tables. Productivity data for industries in other sectors have been published in separate releases and can be found on the BLS Labor Productivity and Costs web site at <http://www.bls.gov/lpc>.

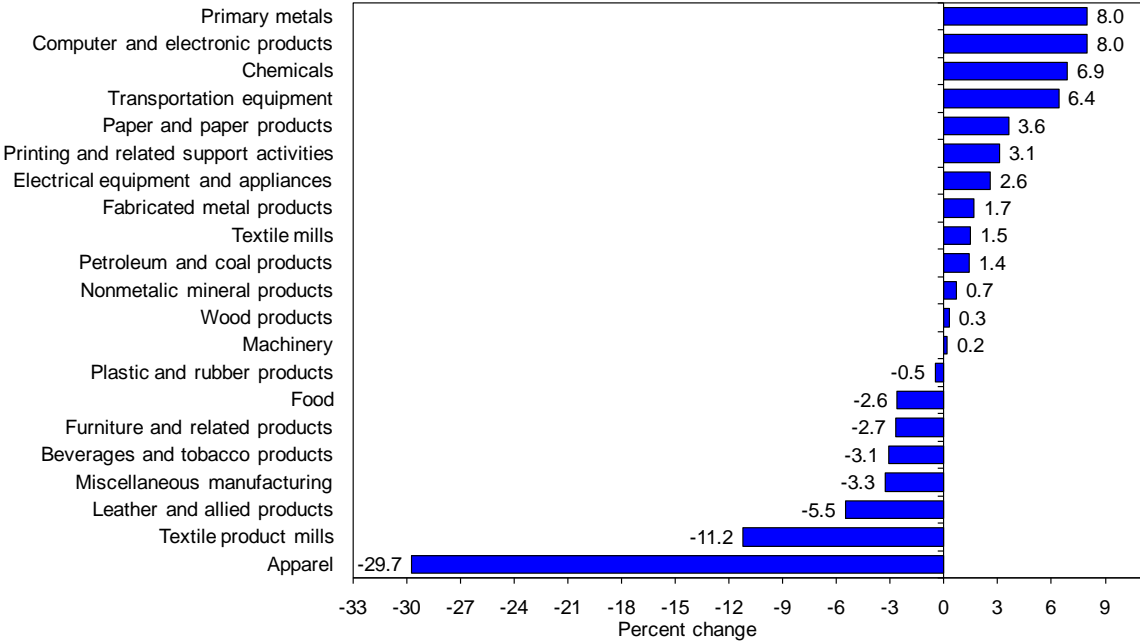
Over the longer 1987-2007 period, labor productivity increased in over 95 percent of the detailed manufacturing industries. (See table 2.) Chart 1 compares the distribution of productivity growth rates for 4-digit manufacturing industries in the most recent year with those for the period from 1987 to 2007.

Chart 1. Distribution of annual percent change in output per hour, 1987-2007 and 2006-2007



Productivity rose in a higher proportion of the more aggregate industries. In 2007 labor productivity increased in 13 of the 21 3-digit NAICS manufacturing industries. Chart 2 shows the range of productivity changes for all 3-digit manufacturing industries. Productivity rose the fastest in primary metals manufacturing and in computer and electronic products manufacturing, two industries where output increased rapidly but hours fell. In contrast, a very large drop in output combined with a much smaller drop in labor hours resulted in a large productivity decline in apparel manufacturing. Unit labor costs fell in 2 of the aggregate industries in 2007: primary metals manufacturing and transportation equipment manufacturing.

Chart 2. Percent change in output per hour in 3-digit NAICS manufacturing industries, 2006-2007



Between 1987 and 2007, productivity rose in all but one of the 21 aggregate industries. The only industry to decline was apparel manufacturing, as output fell more rapidly than hours.

Year-to-year movements in industry productivity measures may be erratic, particularly in smaller industries. The annual measures based on sample data may differ from measures generated by a census of establishments in the industry. Annual changes in an industry’s output and use of labor may reflect cyclical changes in the economy as well as long-term trends. As a result, long-term productivity changes tend to be more reliable indicators of industry performance than are year-to-year changes.

Revisions: This news release incorporates data from the Census Bureau’s 2007 Economic Census and the annual benchmark revision of the BLS Current Employment Statistics (CES) survey published in February 2009. The productivity measures in this release reflect, for the first time, data classified according to the 2007 NAICS; series for some industries may have changed as a result. The base year has been changed from 1997 to 2002 for all indexes. All of the measures for 2007 in this release are preliminary and subject to revision.

The manufacturing industry measures have been revised to include, for the first time, the output of nonemployer firms and the employment, hours, and labor compensation of self-employed and unpaid family workers. Although small, the revision reflects a more complete accounting of the economic activity in each industry, and improves consistency with the measures for other sectors that account for the activity of these firms and workers. The employment and hours series included in this news release were previously released in September 2009 as part of a database of employment and hours for a comprehensive set of 3- and 4-digit NAICS industries.

Technical Note

Labor Productivity: The industry labor productivity measures describe the relationship between industry output and the labor time involved in its production. They show the changes from period to period in the amount of goods and services produced per hour. Although the labor productivity measures relate output to hours of all persons in an industry, they do not measure the specific contribution of labor or any other factor of production. Rather, they reflect the joint effects of many influences, including changes in technology; capital investment; utilization of capacity, energy, and materials; the use of purchased services inputs, including contract employment services; the organization of production; managerial skill; and the characteristics and effort of the workforce.

Output: Industry output is measured as an annual-weighted index of the changes in the various products or services (in real terms) provided for sale outside the industry. Real industry output is usually derived by deflating nominal sales or values of production using BLS price indexes, but for some industries it is measured by physical quantities of output. For manufacturing industries, industry output reflects sectoral value of production, derived by adjusting shipments for changes in inventories and removing intra-industry transactions.

Industry output measures are constructed primarily using data from the economic censuses and annual surveys of the U.S. Census Bureau, U.S. Department of Commerce, together with information on price changes primarily from BLS.

Labor Hours: The primary source of data on industry employment and hours is the BLS Current Employment Statistics (CES) survey. The CES provides monthly data on the number of total and production worker jobs held by wage and salary workers in nonfarm establishments, as well as data on the average weekly hours of production workers in those establishments. CES data are supplemented or further disaggregated for some industries using data from the BLS Quarterly Census of Employment and Wages (QCEW), the Bureau of the Census, or other sources. Data from the Current Population Survey (CPS) also supplement the CES data. CPS data are used to estimate employment and hours of self-employed and unpaid family workers in each industry. Data from the CPS, together with the CES data, are also used to estimate the historical average weekly hours of nonproduction workers for each

industry. Hours of all persons in an industry are treated as homogeneous and are directly aggregated.

Unit Labor Costs: Unit labor costs represent the cost of labor required to produce one unit of output. The unit labor cost indexes are computed by dividing an index of industry labor compensation by an index of real industry output. Unit labor costs also describe the relationship between compensation per hour and real output per hour (labor productivity). Increases in hourly compensation increase unit labor costs; increases in labor productivity offset compensation increases and lower unit labor costs.

Compensation, defined as payroll plus supplemental payments, is a measure of the cost to the employer of securing the services of labor. Payroll includes salaries, wages, commissions, dismissal pay, bonuses, vacation and sick leave pay, and compensation in kind. Supplemental payments include legally required expenditures and payments for voluntary programs. The legally required portion consists primarily of Federal old age and survivors' insurance, unemployment compensation, and workers' compensation. Payments for voluntary programs include all programs not specifically required by legislation, such as the employer portion of private health insurance and pension plans.

Additional Information: While the rates of change reported by BLS in this news release are rounded to one decimal place, all industry productivity percent changes are calculated using index numbers to three decimal places.

Industry productivity and related indexes and rates of change can be accessed online by visiting the Labor Productivity and Costs web site at <http://www.bls.gov/lpc/>. Levels of industry employment, hours, labor compensation, and value of production, and the implicit price deflator for output for these industries are available upon request by calling the Division of Industry Productivity Studies (202-691-5618) or by sending a request by e-mail to dipsweb@bls.gov. Information in this report will be made available to sensory-impaired individuals upon request. Voice phone: 202-691-5618; TDD message referral phone number: 1-800-877-8339.

To subscribe to the industry productivity program's electronic notification service, send an e-mail to dipsnews@bls.gov with the word "subscribe" in the subject line.

Table 1. Percent change in output per hour, output, hours, compensation, and unit labor costs, 2006-2007

NAICS code	Industry	2007 Employment (thousands)	Percent change, 2006-2007				
			Output per hour	Output	Hours	Labor compensation	Unit labor costs
Manufacturing							
311	Food	1515	-2.6	-0.6	2.1	5.5	6.2
3111	Animal food	50	1.0	-2.8	-3.8	8.4	11.6
3112	Grain and oilseed milling	61	1.7	3.3	1.6	1.0	-2.3
3113	Sugar and confectionery products	75	-8.9	-6.6	2.5	5.1	12.6
3114	Fruit and vegetable preserving and specialty	174	6.6	3.7	-2.7	7.2	3.3
3115	Dairy products	136	-1.2	1.1	2.4	6.5	5.4
3116	Animal slaughtering and processing	514	-3.3	-0.9	2.5	13.9	15.0
3117	Seafood product preparation and packaging	43	-10.5	-1.0	10.7	7.8	8.9
3118	Bakeries and tortilla manufacturing	293	-2.4	-1.8	0.6	-2.2	-0.4
3119	Other food products	168	-7.8	-0.1	8.3	-1.5	-1.4
312	Beverages and tobacco products	201	-3.1	-1.5	1.6	1.7	3.3
3121	Beverages	178	0.1	3.3	3.2	4.1	0.7
3122	Tobacco and tobacco products	22	-0.6	-11.1	-10.6	-8.8	2.5
313	Textile mills	179	1.5	-10.1	-11.4	-3.5	7.4
3131	Fiber, yarn, and thread mills	42	9.7	-5.1	-13.5	7.1	13.0
3132	Fabric mills	82	0.6	-12.6	-13.1	-10.5	2.4
3133	Textile and fabric finishing mills	55	-3.8	-10.7	-7.1	2.5	14.7
314	Textile product mills	176	-11.2	-17.8	-7.5	0.7	22.6
3141	Textile furnishings mills	91	-7.3	-18.8	-12.5	3.7	27.8
3149	Other textile product mills	85	-14.6	-15.8	-1.4	-2.2	16.1
315	Apparel	245	-29.7	-31.4	-2.4	-8.3	33.7
3151	Apparel knitting mills	35	-32.8	-35.2	-3.5	-9.1	40.2
3152	Cut and sew apparel	191	-29.4	-30.8	-2.0	-7.1	34.2
3159	Accessories and other apparel	19	-25.7	-28.7	-4.0	-17.5	15.6
316	Leather and allied products	39	-5.5	-11.5	-6.3	-2.2	10.6
3161	Leather and hide tanning and finishing	5	30.3	12.8	-13.4	-6.3	-16.9
3162	Footwear	17	-19.8	-18.0	2.2	-9.2	10.7
3169	Other leather products	17	-2.5	-14.4	-12.2	5.3	23.0
321	Wood products	548	0.3	-7.1	-7.3	-1.0	6.5
3211	Sawmills and wood preservation	118	-5.0	-10.3	-5.6	-4.0	7.0
3212	Plywood and engineered wood products	109	3.7	-9.3	-12.5	-6.3	3.2
3219	Other wood products	321	1.9	-4.4	-6.1	2.3	7.0
322	Paper and paper products	459	3.6	1.0	-2.6	1.2	0.2
3221	Pulp, paper, and paperboard mills	132	2.9	-2.0	-4.8	-3.3	-1.3
3222	Converted paper products	326	4.6	2.9	-1.6	4.3	1.3
323	Printing and related support activities	658	3.1	1.0	-2.1	7.8	6.8
3231	Printing and related support activities	658	3.1	1.0	-2.1	7.8	6.8
324	Petroleum and coal products	115	1.4	0.0	-1.4	0.7	0.7
3241	Petroleum and coal products	115	1.4	0.0	-1.4	0.7	0.7
325	Chemicals	869	6.9	5.1	-1.7	6.3	1.1
3251	Basic chemicals	149	15.5	13.7	-1.5	-0.3	-12.3
3252	Resin, rubber, and artificial fibers	109	3.0	5.8	2.7	15.2	8.9
3253	Agricultural chemicals	36	6.0	-3.9	-9.3	5.5	9.8
3254	Pharmaceuticals and medicines	296	-2.3	-0.9	1.5	6.8	7.8
3255	Paints, coatings, and adhesives	66	-2.1	-4.0	-1.9	8.5	13.0
3256	Soaps, cleaning compounds, and toiletries	112	20.7	13.5	-6.0	8.2	-4.7
3259	Other chemical products and preparations	101	15.5	6.8	-7.5	6.7	-0.1
326	Plastics and rubber products	762	-0.5	-2.0	-1.5	1.5	3.5
3261	Plastics products	612	-1.6	-2.7	-1.2	2.4	5.3
3262	Rubber products	150	4.6	1.7	-2.8	-1.8	-3.4

Table 1. Percent change in output per hour, output, hours, compensation, and unit labor costs, 2006-2007

NAICS code	Industry	2007 Employment (thousands)	Percent change, 2006-2007				
			Output per hour	Output	Hours	Labor compensation	Unit labor costs
327	Nonmetallic mineral products	515	0.7	-1.7	-2.4	1.3	3.1
3271	Clay products and refractories	63	-5.7	-10.6	-5.2	-5.5	5.7
3272	Glass and glass products	102	-0.6	-4.4	-3.8	-3.6	0.8
3273	Cement and concrete products	246	3.7	-0.4	-4.0	0.6	1.1
3274	Lime and gypsum products	19	-4.6	-4.4	0.1	3.8	8.6
3279	Other nonmetallic mineral products	85	-2.7	3.2	6.1	13.7	10.2
331	Primary metals	458	8.0	3.8	-3.9	2.9	-0.9
3311	Iron and steel mills and ferroalloy production	101	3.0	4.8	1.7	6.0	1.2
3312	Steel products from purchased steel	61	-2.1	-4.1	-2.0	1.0	5.3
3313	Alumina and aluminum production	71	7.2	0.3	-6.4	-3.4	-3.7
3314	Other nonferrous metal production	69	21.5	13.0	-7.0	20.4	6.5
3315	Foundries	156	1.1	-4.4	-5.5	-3.8	0.6
332	Fabricated metal products	1598	1.7	3.0	1.3	10.0	6.8
3321	Forging and stamping	111	5.7	3.0	-2.6	7.4	4.2
3322	Cutlery and hand tools	53	12.2	2.3	-8.8	7.3	4.9
3323	Architectural and structural metals	424	-0.4	2.7	3.0	14.9	11.9
3324	Boilers, tanks, and shipping containers	97	3.2	6.7	3.4	8.6	1.8
3325	Hardware	34	-14.6	-14.2	0.4	-5.8	9.8
3326	Spring and wire products	57	-1.9	-3.8	-2.0	-0.1	3.9
3327	Machine shops and threaded products	376	2.4	3.6	1.2	12.5	8.5
3328	Coating, engraving, and heat treating metals	149	2.6	4.7	2.1	12.1	7.0
3329	Other fabricated metal products	297	0.6	2.5	1.9	6.0	3.5
333	Machinery	1204	0.2	1.2	1.0	6.7	5.5
3331	Agriculture, construction, and mining machinery	232	-3.3	5.2	8.8	12.4	6.9
3332	Industrial machinery	128	2.3	3.3	1.0	8.3	4.8
3333	Commercial and service industry machinery	110	-10.0	-6.5	3.9	1.4	8.4
3334	HVAC and commercial refrigeration equipment	155	-3.7	-5.7	-2.0	0.5	6.5
3335	Metalworking machinery	200	5.0	-0.7	-5.5	5.7	6.5
3336	Turbine and power transmission equipment	102	-0.3	-1.6	-1.3	4.2	5.9
3339	Other general purpose machinery	278	2.2	3.0	0.7	8.0	4.9
334	Computer and electronic products	1280	8.0	4.7	-3.0	8.7	3.8
3341	Computer and peripheral equipment	187	22.3	18.4	-3.1	-10.6	-24.5
3342	Communications equipment	129	-4.6	-14.3	-10.1	5.2	22.7
3343	Audio and video equipment	30	-27.3	-30.2	-3.9	-7.5	32.4
3344	Semiconductors and electronic components	450	15.6	11.0	-4.0	14.4	3.1
3345	Electronic instruments	445	7.3	8.5	1.1	10.6	1.9
3346	Magnetic media manufacturing and reproduction	39	2.7	-7.8	-10.2	7.4	16.6
335	Electrical equipment and appliances	432	2.6	2.3	-0.3	6.3	4.0
3351	Electric lighting equipment	59	0.9	3.3	2.4	5.1	1.8
3352	Household appliances	77	-2.9	-2.1	0.8	-10.7	-8.8
3353	Electrical equipment	158	5.5	6.2	0.7	7.9	1.6
3359	Other electrical equipment and components	139	4.3	1.1	-3.1	12.6	11.4
336	Transportation equipment	1726	6.4	3.3	-2.9	0.8	-2.4
3361	Motor vehicles	221	4.8	-0.7	-5.2	-4.8	-4.2
3362	Motor vehicle bodies and trailers	168	6.9	-5.0	-11.2	3.3	8.7
3363	Motor vehicle parts	613	3.2	-3.1	-6.1	-4.7	-1.7
3364	Aerospace products and parts	492	12.0	16.8	4.3	4.4	-10.6
3365	Railroad rolling stock	28	-0.8	-0.3	0.5	26.0	26.4
3366	Ship and boat building	163	1.8	1.9	0.2	15.7	13.5
3369	Other transportation equipment	42	21.0	17.0	-3.3	9.0	-6.9
337	Furniture and related products	568	-2.7	-6.9	-4.3	3.7	11.4
3371	Household and institutional furniture	380	-3.6	-9.3	-5.9	1.7	12.1
3372	Office furniture and fixtures	139	-2.7	-3.6	-0.9	7.9	11.8
3379	Other furniture-related products	49	-0.9	-2.0	-1.1	3.8	5.9
339	Miscellaneous manufacturing	710	-3.3	-4.4	-1.1	2.7	7.4
3391	Medical equipment and supplies	320	-3.5	-2.1	1.5	5.5	7.7
3399	Other miscellaneous manufacturing	390	-3.7	-6.8	-3.3	-0.1	7.2

Table 2. Average annual percent change in output per hour, output, hours, compensation, and unit labor costs, 1987-2007

NAICS code	Industry	Average annual percent change, 1987-2007				
		Output per hour	Output	Hours	Labor compensation	Unit labor costs
Manufacturing						
311	Food	1.1	1.5	0.3	3.2	1.7
3111	Animal food	3.2	2.1	-1.0	3.3	1.2
3112	Grain and oilseed milling	2.3	1.2	-1.1	2.0	0.8
3113	Sugar and confectionery products	1.3	0.3	-0.9	2.2	1.9
3114	Fruit and vegetable preserving and specialty	1.8	1.5	-0.3	3.0	1.5
3115	Dairy products	1.3	0.9	-0.3	3.1	2.1
3116	Animal slaughtering and processing	0.8	2.3	1.5	4.0	1.7
3117	Seafood product preparation and packaging	2.1	1.3	-0.8	3.5	2.2
3118	Bakeries and tortilla manufacturing	0.9	0.5	-0.3	2.2	1.7
3119	Other food products	0.4	2.1	1.7	4.4	2.2
312	Beverages and tobacco products	0.7	0.0	-0.7	1.5	1.4
3121	Beverages	1.9	1.8	-0.1	2.1	0.3
3122	Tobacco and tobacco products	1.2	-2.7	-3.9	-0.8	2.0
313	Textile mills	3.7	-1.9	-5.5	-2.0	0.0
3131	Fiber, yarn, and thread mills	4.3	-0.8	-4.9	-1.2	-0.4
3132	Fabric mills	4.7	-2.1	-6.5	-2.2	-0.1
3133	Textile and fabric finishing mills	1.3	-2.7	-3.9	-2.2	0.5
314	Textile product mills	0.9	-0.8	-1.7	1.3	2.0
3141	Textile furnishings mills	0.7	-1.0	-1.7	0.5	1.6
3149	Other textile product mills	1.4	-0.2	-1.6	2.3	2.5
315	Apparel	-0.9	-7.5	-6.6	-5.0	2.7
3151	Apparel knitting mills	-0.4	-6.3	-5.9	-5.3	1.1
3152	Cut and sew apparel	-0.9	-7.8	-6.9	-5.0	3.0
3159	Accessories and other apparel	-2.9	-6.7	-3.9	-3.9	3.0
316	Leather and allied products	2.1	-4.3	-6.3	-2.9	1.5
3161	Leather and hide tanning and finishing	0.9	-4.3	-5.2	-2.6	1.8
3162	Footwear	1.3	-6.5	-7.7	-5.0	1.7
3169	Other leather products	2.1	-2.4	-4.4	-0.6	1.9
321	Wood products	1.5	0.8	-0.7	3.3	2.4
3211	Sawmills and wood preservation	2.4	0.6	-1.7	1.8	1.2
3212	Plywood and engineered wood products	1.0	0.9	0.0	3.2	2.2
3219	Other wood products	1.3	0.9	-0.4	3.9	3.1
322	Paper and paper products	2.1	0.4	-1.6	1.6	1.2
3221	Pulp, paper, and paperboard mills	3.1	0.0	-3.0	0.5	0.4
3222	Converted paper products	1.6	0.7	-0.9	2.5	1.8
323	Printing and related support activities	1.4	0.4	-1.0	2.2	1.8
3231	Printing and related support activities	1.4	0.4	-1.0	2.2	1.8
324	Petroleum and coal products	2.8	1.2	-1.6	3.9	2.7
3241	Petroleum and coal products	2.8	1.2	-1.6	3.9	2.7
325	Chemicals	2.2	1.6	-0.6	3.3	1.7
3251	Basic chemicals	3.6	1.2	-2.4	2.0	0.8
3252	Resin, rubber, and artificial fibers	2.8	1.3	-1.5	2.1	0.9
3253	Agricultural chemicals	2.9	1.0	-1.8	1.8	0.7
3254	Pharmaceuticals and medicines	0.8	3.4	2.6	6.4	2.9
3255	Paints, coatings, and adhesives	1.2	0.1	-1.2	2.8	2.7
3256	Soaps, cleaning compounds, and toiletries	3.5	2.9	-0.6	3.1	0.2
3259	Other chemical products and preparations	2.7	0.5	-2.1	1.7	1.2
326	Plastics and rubber products	2.4	2.3	-0.1	1.2	-1.1
3261	Plastics products	2.3	2.6	0.3	4.0	1.3
3262	Rubber products	2.6	1.1	-1.5	-3.6	-4.6

Table 2. Average annual percent change in output per hour, output, hours, compensation, and unit labor costs, 1987-2007

NAICS code	Industry	Average annual percent change, 1987-2007				
		Output per hour	Output	Hours	Labor compensation	Unit labor costs
327	Nonmetallic mineral products	1.4	1.3	-0.1	2.7	1.4
3271	Clay products and refractories	1.2	-0.9	-2.1	0.5	1.4
3272	Glass and glass products	2.3	0.7	-1.6	1.0	0.4
3273	Cement and concrete products	0.8	2.0	1.3	4.0	1.9
3274	Lime and gypsum products	1.2	0.5	-0.8	3.3	2.8
3279	Other nonmetallic mineral products	1.6	1.8	0.2	3.5	1.7
331	Primary metals	3.1	1.1	-1.9	1.1	0.0
3311	Iron and steel mills and ferroalloy production	5.2	2.4	-2.7	0.4	-1.9
3312	Steel products from purchased steel	-0.9	-1.4	-0.6	1.1	2.5
3313	Alumina and aluminum production	3.0	0.8	-2.2	1.0	0.2
3314	Other nonferrous metal production	1.2	-1.1	-2.3	2.4	3.6
3315	Foundries	2.6	0.9	-1.6	1.5	0.5
332	Fabricated metal products	1.8	1.8	0.1	3.2	1.4
3321	Forging and stamping	3.2	2.2	-0.9	2.6	0.3
3322	Cutlery and hand tools	1.8	-0.2	-2.0	1.8	2.0
3323	Architectural and structural metals	1.3	2.2	0.9	4.4	2.2
3324	Boilers, tanks, and shipping containers	0.9	0.4	-0.5	2.0	1.6
3325	Hardware	0.9	-2.0	-2.9	-0.7	1.3
3326	Spring and wire products	2.6	1.0	-1.5	2.1	1.2
3327	Machine shops and threaded products	2.4	3.5	1.1	4.9	1.3
3328	Coating, engraving, and heat treating metals	3.1	3.6	0.4	4.0	0.4
3329	Other fabricated metal products	1.4	0.8	-0.5	2.0	1.2
333	Machinery	2.7	2.0	-0.7	2.5	0.4
3331	Agriculture, construction, and mining machinery	2.8	3.4	0.6	3.2	-0.2
3332	Industrial machinery	3.2	2.5	-0.7	3.0	0.6
3333	Commercial and service industry machinery	1.3	-0.2	-1.5	0.6	0.8
3334	HVAC and commercial refrigeration equipment	2.2	1.9	-0.3	2.5	0.6
3335	Metalworking machinery	2.2	0.6	-1.6	1.9	1.4
3336	Turbine and power transmission equipment	2.3	1.9	-0.3	1.5	-0.4
3339	Other general purpose machinery	2.9	2.1	-0.8	3.1	1.0
334	Computer and electronic products	12.5	9.9	-2.3	1.5	-7.6
3341	Computer and peripheral equipment	24.3	19.2	-4.1	-2.8	-18.4
3342	Communications equipment	7.8	4.6	-3.0	1.0	-3.4
3343	Audio and video equipment	4.8	1.2	-3.4	1.3	0.1
3344	Semiconductors and electronic components	17.4	15.8	-1.4	2.7	-11.3
3345	Electronic instruments	4.3	2.2	-2.0	2.2	0.0
3346	Magnetic media manufacturing and reproduction	2.6	1.7	-0.9	1.6	-0.2
335	Electrical equipment and appliances	2.9	0.7	-2.2	1.6	0.9
3351	Electric lighting equipment	2.1	0.5	-1.6	1.9	1.4
3352	Household appliances	4.4	1.5	-2.7	0.0	-1.5
3353	Electrical equipment	3.2	0.7	-2.4	1.5	0.8
3359	Other electrical equipment and components	2.2	0.3	-1.8	2.2	1.9
336	Transportation equipment	3.2	2.1	-1.0	1.4	-0.7
3361	Motor vehicles	4.2	2.5	-1.6	1.3	-1.1
3362	Motor vehicle bodies and trailers	1.6	2.5	0.9	5.1	2.5
3363	Motor vehicle parts	3.1	2.9	-0.2	1.6	-1.3
3364	Aerospace products and parts	2.0	-0.4	-2.4	0.2	0.6
3365	Railroad rolling stock	4.7	5.3	0.7	4.2	-1.1
3366	Ship and boat building	1.5	1.1	-0.4	2.7	1.6
3369	Other transportation equipment	5.7	6.1	0.3	4.8	-1.2
337	Furniture and related products	1.7	1.0	-0.7	3.0	2.0
3371	Household and institutional furniture	1.6	0.8	-0.8	3.0	2.2
3372	Office furniture and fixtures	1.7	1.1	-0.6	2.9	1.8
3379	Other furniture-related products	2.2	2.5	0.3	3.6	1.0
339	Miscellaneous manufacturing	2.9	2.9	0.0	4.6	1.6
3391	Medical equipment and supplies	3.5	4.7	1.2	5.9	1.2
3399	Other miscellaneous manufacturing	2.3	1.5	-0.8	3.5	1.9