

Transmission of material in this release is embargoed until
8:30 a.m. (EST) Tuesday, January 14, 2014

USDL-14-0035

Technical information: (202) 691-7101 • MXPinfo@bls.gov • www.bls.gov/mxp
Media contact: (202) 691-5902 • PressOffice@bls.gov

U.S. IMPORT AND EXPORT PRICE INDEXES – DECEMBER 2013

U.S. import prices recorded no change in December, the U.S. Bureau of Labor Statistics reported today, following declines of 0.9 percent in November and 0.6 percent in October. In December, higher fuel prices offset declining nonfuel prices. U.S. export prices advanced 0.4 percent in December, after edging up 0.1 percent the previous month.

Chart 1. One-month percent change in the Import Price Index: December 2012 – December 2013

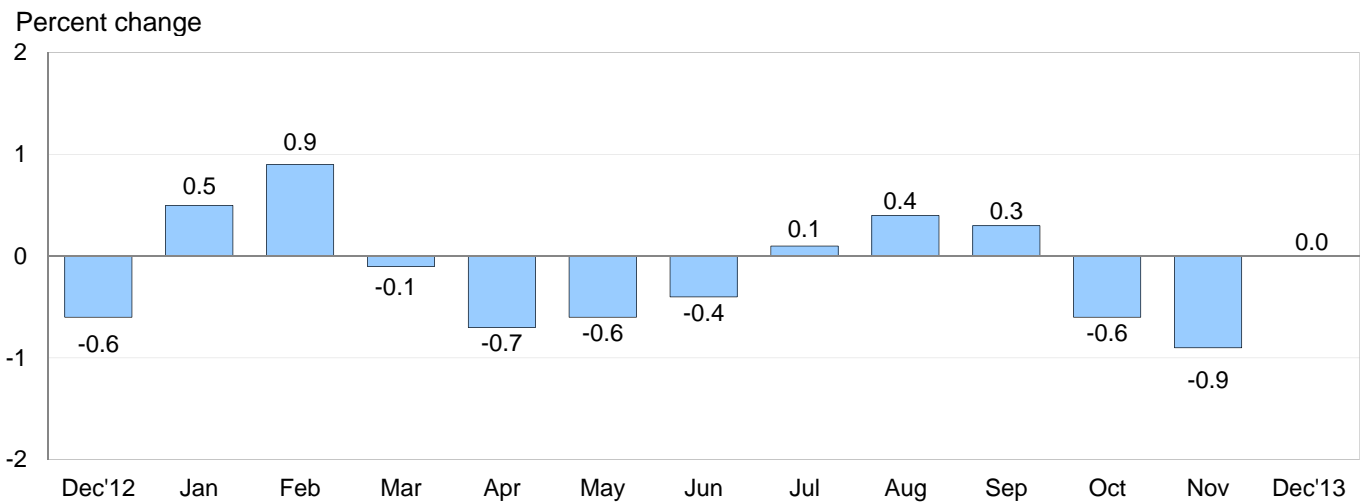
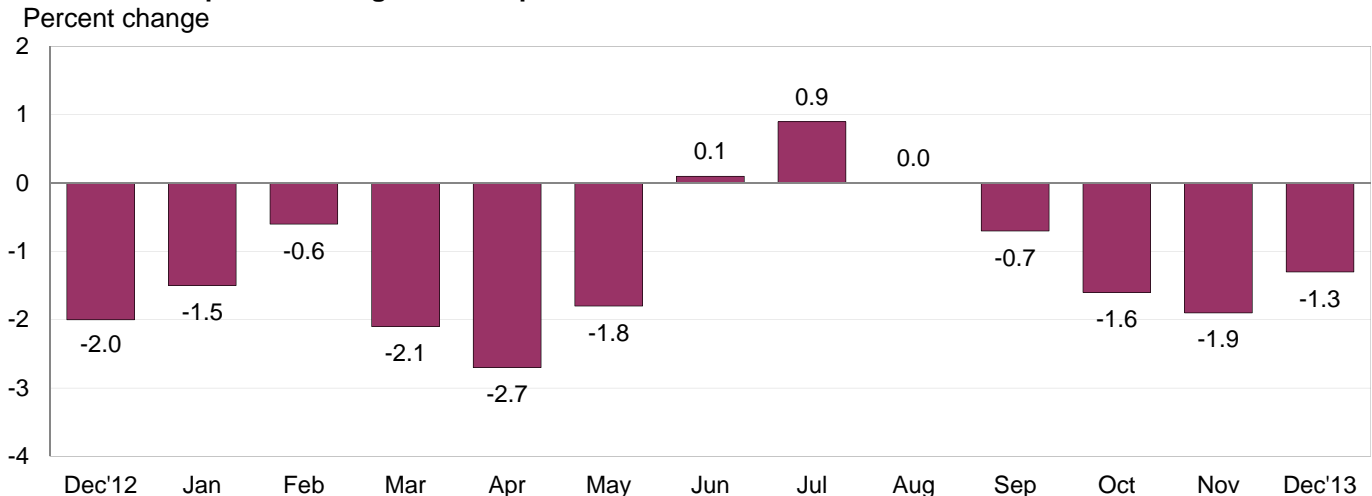


Chart 2. 12-month percent change in the Import Price Index: December 2012 – December 2013



All Imports: Import prices were unchanged in December, after falling 1.6 percent over the previous 2 months. Decreasing fuel prices drove the overall declines in import prices in November and October. The price index for U.S. imports decreased 1.3 percent in 2013 following a 2.0 percent decline in 2012. Falling fuel and nonfuel prices contributed to the 2013 decline in overall import prices.

Fuel Imports: The price index for import fuel increased 0.4 percent in December, after declining 4.3 percent in November and 3.3 percent in October. The December upturn in fuel prices was led by a 15.8 percent increase in natural gas prices that more than offset a 0.1 percent drop in petroleum prices. Fuel prices fell 1.7 percent in 2013 following a 7.9 percent decrease the previous year. The price indexes for both petroleum and natural gas fell in 2013, declining 1.5 percent and 3.7 percent, respectively. Natural gas prices fell over the past year despite rising 35.5 percent over the final quarter of 2013.

All Imports Excluding Fuel: Nonfuel import prices edged down 0.1 percent in December, after recording no change in November. Lower prices for each of the major finished goods categories and nonfuel industrial supplies and materials contributed to the December drop in nonfuel import prices. Despite movement over the last 4 months of 2013, the price index for nonfuel imports declined 1.2 percent over the past year, after recording no change in 2012.

Table A. Percent change in import and export price indexes, selected categories

Month	IMPORTS			EXPORTS		
	All imports	Fuel imports	Nonfuel imports	All exports	Agricultural exports	Non-agricultural exports
2012						
December.....	-0.6	-2.2	-0.1	-0.1	0.1	-0.2
2013						
January.....	0.5	1.9	0.2	0.4	-1.2	0.5
February.....	0.9	3.6	0.1	0.7	2.0	0.6
March.....	-0.1	0.0	-0.1	-0.5	-1.8	-0.3
April.....	-0.7	-2.4	-0.2	-0.6	-2.1	-0.5
May.....	-0.6	-1.7	-0.4	-0.5	1.1	-0.7
June.....	-0.4	-0.7	-0.3	-0.1	0.8	-0.2
July.....	0.1	1.7	-0.4	-0.2	-0.3	-0.2
August.....	0.4	2.6	-0.2	-0.5	-4.2	0.0
September.....	0.3	1.0	0.1	0.4	0.6	0.3
October.....	-0.6	-3.3 ^r	0.1	-0.6	-1.3 ^r	-0.5 ^r
November.....	-0.9 ^r	-4.3 ^r	0.0	0.1	-0.2	0.1
December.....	0.0	0.4	-0.1	0.4	0.4	0.3
Dec. 2011 to 2012.....	-2.0	-7.9	0.0	1.1	13.4	-0.3
Dec. 2012 to 2013.....	-1.3	-1.7	-1.2	-1.0	-6.3	-0.5

r Revised

Chart 3. One-month percent change in the Export Price Index: December 2012 – December 2013

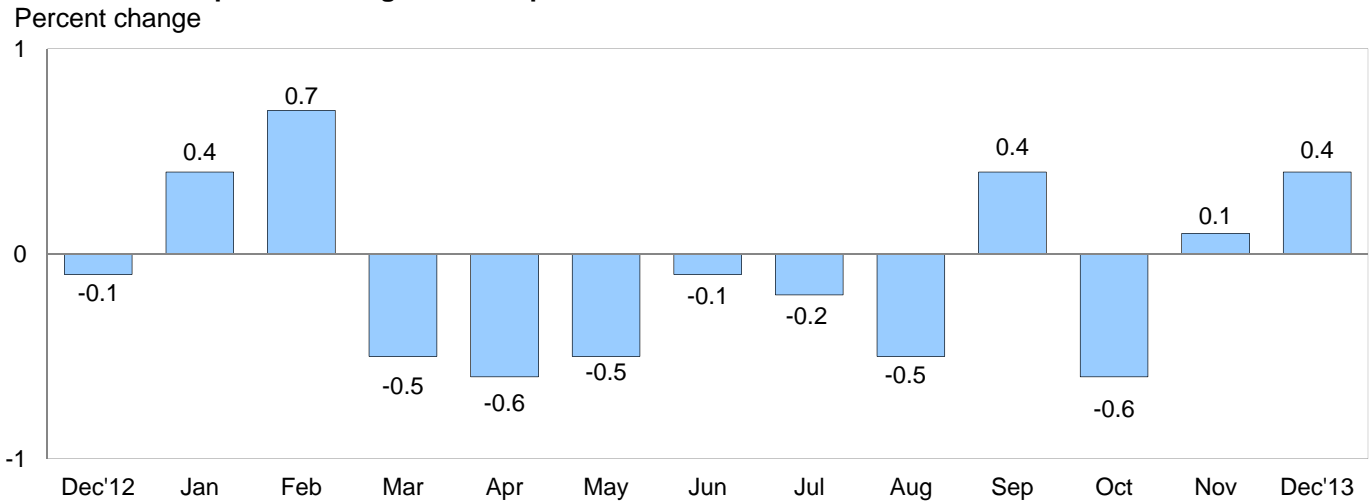
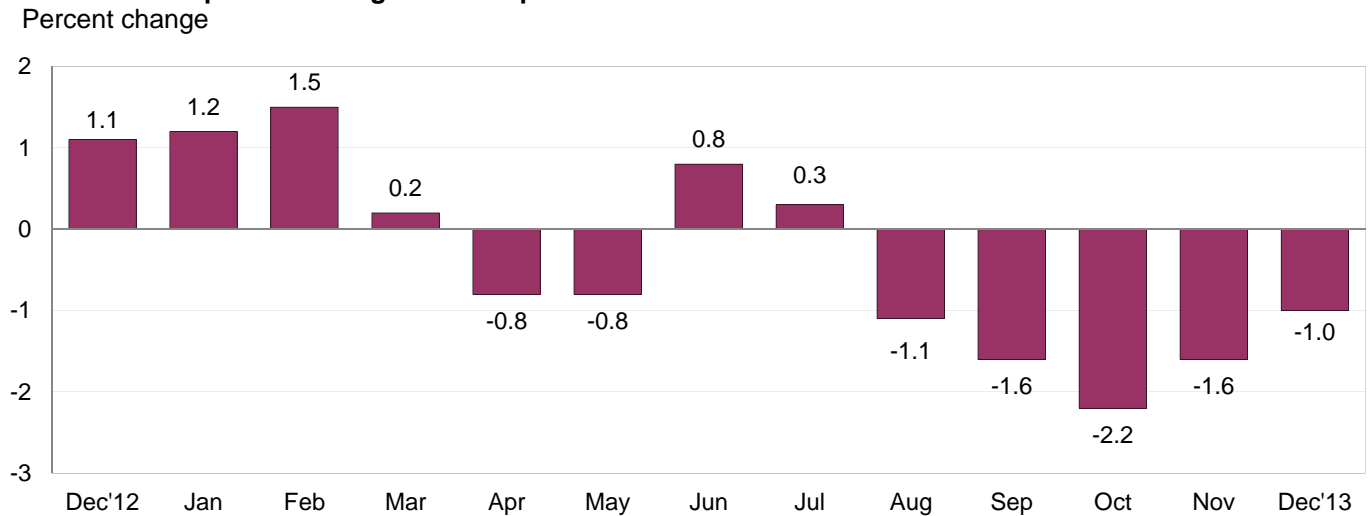


Chart 4. 12-month percent change in the Export Price Index: December 2012 – December 2013



All Exports: Export prices rose 0.4 percent in December following a 0.1 percent advance in November. Higher agricultural and nonagricultural prices contributed to the December increase in overall export prices. Despite rising in 3 of the past 4 months, the price index for U.S. exports fell 1.0 percent over the past year, after increasing 1.1 percent in 2012.

Agricultural Exports: Agricultural prices advanced 0.4 percent in December, after declining 0.2 percent the previous month. The December increase was driven by a 4.5 percent rise in soybean prices that more than offset lower vegetable and wheat prices. The price index for agricultural exports fell 6.3 percent in 2013 following a 13.4 percent increase the previous year. The 2013 drop was led by a 36.4 percent decline in corn prices, a 19.3 percent decrease in wheat prices, and an 8.9 percent fall in soybean prices.

All Exports Excluding Agriculture: The price index for nonagricultural exports rose 0.3 percent in December following a 0.1 percent advance in November. The December increase was driven by higher nonagricultural industrial supplies and materials prices. Despite the recent upturn, prices for nonagricultural exports fell for the second consecutive year in 2013, declining 0.5 percent, after a 0.3 percent drop in 2012.

SELECTED DECEMBER HIGHLIGHTS

Import Prices

Imports by Locality of Origin: Import prices from China were unchanged in December, after ticking up 0.1 percent in November. Prices for imports from China declined for the second consecutive year in 2013, decreasing 0.8 percent following a 0.6 percent drop in 2012. The 2013 decline was the largest calendar-year decrease since the index fell 1.8 percent in 2009. The price index for imports from Japan declined 0.3 percent in December and 3.4 percent over the past year. The 2013 drop was the largest calendar-year decline for the index since a 5.2 percent decrease in 1997. Prices for imports from the European Union and Mexico also decreased in December, each declining 0.2 percent. In contrast, import prices from Canada ticked up 0.1 percent in December.

Nonfuel Industrial Supplies and Materials: Nonfuel industrial supplies and materials prices fell 0.3 percent in December, led by lower prices for gold and other precious metals. Lower metals prices also were the main contributor to a 5.0 percent drop in the price index for nonfuel industrial supplies and materials over the past year.

Finished Goods: Each of the major finished goods categories recorded declines in both December and over 2013. Prices for consumer goods declined 0.2 percent in December and 0.4 percent over the past year. Capital goods prices edged down 0.1 percent in December and fell 0.9 percent over the past 12 months. The price index for automotive vehicles decreased 0.1 percent in December and 1.4 percent in 2013.

Foods, Feeds, and Beverages: Foods, feeds, and beverages prices rose 0.6 percent in December, and 4.1 percent in 2013. The December increase was driven by higher vegetable and coffee prices.

Transportation Services: Import air passenger fares rose 7.1 percent in December, after a 3.4 percent advance in November and a 4.3 percent increase in October. The December increase was led by higher Asian and Latin American/Caribbean fares. Import air passenger fares advanced 8.2 percent in 2013. Import air freight prices fell 0.4 percent in December, while increasing 0.9 percent over the past year.

Export Prices

Nonagricultural Industrial Supplies and Materials: Nonagricultural industrial supplies and materials prices rose 1.0 percent in December as a 4.3 percent increase in fuel prices more than offset lower prices for gold and other precious metals. Despite the December increase, the price index for nonagricultural industrial supplies and materials fell 1.6 percent in 2013.

Finished Goods: Finished goods prices were mixed in December as the price indexes for capital goods and automotive vehicles fell 0.1 percent while consumer goods prices rose 0.1 percent. In 2013, capital goods prices and automotive vehicles prices increased 0.7 percent and 0.5 percent, respectively, while consumer goods prices declined 1.4 percent.

Transportation Services: Export air passenger prices increased 9.4 percent in December following declines in each of the 3 previous months. The index for export air passenger fares rose 4.1 percent in 2013, led by a 7.6 percent advance in Latin American/Caribbean fares. Export air freight prices declined 0.2 percent in December and rose 0.3 percent in 2013.

Import and Export Price Index data for January 2014 are scheduled for release on Friday, February 14, 2014 at 8:30 a.m. (EST).

Table 1. U.S. import price indexes and percent changes for selected categories of goods: December 2012 to December 2013

[2000=100, unless otherwise noted]

Description	End Use	Relative importance Nov. 2013 ¹	Index		Percent change				
			Nov. 2013	Dec. 2013	Annual Dec. 2012 to Dec. 2013	Monthly			
						Aug. 2013 to Sept. 2013	Sept. 2013 to Oct. 2013	Oct. 2013 to Nov. 2013	Nov. 2013 to Dec. 2013
All commodities		100.000	137.6	137.6	-1.3	0.3	-0.6	-0.9	0.0
All imports excluding food and fuels (Dec. 2010=100)		74.304	102.0	101.8	-1.5	0.0	0.0	0.1	-0.2
All imports excluding petroleum		80.365	115.0	115.0	-1.3	0.0	0.1	0.1	0.0
All imports excluding fuels (Dec. 2001=100)		79.485	119.1	119.0	-1.2	0.1	0.1	0.0	-0.1
Foods, feeds, & beverages	0	5.181	175.0	176.0	4.1	0.6	0.6	-0.6	0.6
Agricultural foods, feeds & beverages, excluding distilled beverages.....	00	3.908	190.8	192.5	0.9	0.1	0.3	-0.5	0.9
Nonagricultural foods (fish, distilled beverages).....	01	1.273	139.1	138.4	15.0	2.3	1.7	-0.9	-0.5
Industrial supplies & materials	1	33.651	241.4	241.7	-3.0	0.8	-2.1	-2.7	0.1
Industrial supplies & materials excluding petroleum.....		14.015	158.4	159.1	-5.2	0.3	0.4	0.3	0.4
Industrial supplies & materials excluding fuels (Dec. 2001=100).....		13.135	179.4	178.9	-5.0	0.6	0.1	0.0	-0.3
Industrial supplies & materials, durable....		7.745	167.6	166.8	-6.0	0.9	0.2	-0.1	-0.5
Industrial supplies & materials nondurable excluding petroleum.....		5.389	147.2	149.5	-4.1	-0.5	0.6	0.8	1.6
Fuels & lubricants.....	10	20.518	321.2	322.6	-1.7	1.0	-3.3	-4.3	0.4
Petroleum & petroleum products.....	100	19.637	358.0	357.8	-1.5	1.1	-3.6	-4.7	-0.1
Crude.....	10000	14.838	366.1	361.7	-3.3	1.4	-4.4	-6.1	-1.2
Fuels, n.e.s.-coals & gas.....	101	0.687	112.5	127.8	-4.1	-4.5	8.2	5.2	13.6
Gas-natural.....	10110	0.566	99.3	115.0	-3.7	-5.5	10.2	6.1	15.8
Paper & paper base stocks.....	11	0.576	114.3	113.8	2.1	-0.1	1.1	-0.3	-0.4
Materials associated with nondurable supplies & materials.....	12	4.913	168.9	168.9	-3.8	0.1	0.1	0.2	0.0
Selected building materials.....	13	1.023	142.5	142.0	-1.1	1.0	0.3	0.4	-0.4
Unfinished metals related to durable goods.....	14	3.509	238.0	235.7	-10.7	1.9	-0.1	-0.3	-1.0
Finished metals related to durable goods.....	15	1.579	155.8	156.1	-3.5	0.3	-0.1	-0.1	0.2
Nonmetals related to durable goods.....	16	1.535	112.4	112.3	-1.8	-0.7	0.2	0.0	-0.1
Capital goods	2	24.326	92.5	92.4	-0.9	-0.1	0.0	0.1	-0.1
Electric generating equipment.....	20	3.040	119.3	119.3	-0.3	-0.2	-0.3	0.1	0.0
Nonelectrical machinery.....	21	19.391	85.2	85.1	-1.0	-0.1	0.0	0.1	-0.1
Transportation equipment excluding motor vehicles (Dec. 2001=100).....	22	1.895	136.1	136.1	1.0	0.1	0.1	0.0	0.0
Automotive vehicles, parts & engines	3	12.285	113.4	113.3	-1.4	-0.1	-0.1	0.1	-0.1
Consumer goods, excluding automotives	4	24.558	107.4	107.2	-0.4	-0.1	0.0	0.1	-0.2
Nondurables, manufactured.....	40	12.012	116.2	116.2	0.8	0.0	0.1	0.0	0.0
Durables, manufactured.....	41	11.198	98.2	98.0	-1.7	-0.2	0.0	0.0	-0.2
Nonmanufactured consumer goods.....	42	1.348	117.0	117.0	1.5	0.0	0.8	-0.3	0.0

¹ Relative importance figures are based on 2011 trade values.

NOTES: Data may be revised in each of the three months after original publication.

Dash = Not available

Table 2. U.S. export price indexes and percent changes for selected categories of goods: December 2012 to December 2013

[2000=100, unless otherwise noted]

Description	End Use	Relative importance Nov. 2013 ¹	Index		Percent change				
			Nov. 2013	Dec. 2013	Annual	Monthly			
					Dec. 2012 to Dec. 2013	Aug. 2013 to Sept. 2013	Sept. 2013 to Oct. 2013	Oct. 2013 to Nov. 2013	Nov. 2013 to Dec. 2013
All commodities.....		100.000	131.7	132.2	-1.0	0.4	-0.6	0.1	0.4
Agricultural commodities.....		10.127	212.2	213.0	-6.3	0.6	-1.3	-0.2	0.4
All exports excluding food and fuels (Dec. 2010=100).....		81.326	101.8	101.7	-1.0	0.3	-0.1	-0.1	-0.1
Nonagricultural commodities.....		89.873	125.9	126.3	-0.5	0.3	-0.5	0.1	0.3
Foods, feeds, & beverages.....	0	9.407	212.3	213.4	-6.9	0.8	-1.3	-0.1	0.5
Agricultural foods, feeds & beverages, excluding distilled beverages.....	00	8.721	215.4	216.3	-7.5	0.8	-1.5	-0.1	0.4
Nonagricultural foods (fish, distilled beverages).....	01	0.686	187.2	189.3	0.7	1.4	1.8	-0.2	1.1
Industrial supplies & materials.....	1	33.790	176.3	178.0	-1.4	0.8	-1.2	0.1	1.0
Industrial supplies & materials, durable....		11.695	172.3	171.0	-8.1	1.3	0.1	-0.2	-0.8
Industrial supplies & materials, nondurable.....		22.096	179.3	182.7	2.4	0.6	-2.0	0.2	1.9
Agricultural industrial supplies & materials.....	10	1.406	199.5	199.3	1.5	-0.4	-0.4	-0.9	-0.1
Nonagricultural industrial supplies & materials.....		32.384	175.6	177.4	-1.6	0.9	-1.3	0.1	1.0
Fuels & lubricants.....	11	9.267	253.8	264.7	4.3	1.1	-4.3	1.5	4.3
Nonagricultural supplies & materials excluding fuels & building materials.....	12	22.048	165.5	165.0	-4.3	0.8	-0.1	-0.5	-0.3
Selected building materials.....	13	1.069	125.9	126.3	7.1	0.5	0.3	0.3	0.3
Capital goods.....	2	35.761	106.5	106.4	0.7	0.0	-0.2	0.2	-0.1
Electrical generating equipment.....	20	3.523	114.6	114.6	0.3	-0.1	-0.3	-0.2	0.0
Nonelectrical machinery.....	21	25.985	95.4	95.3	0.4	0.0	-0.2	0.2	-0.1
Transportation equipment excluding motor vehicles (Dec. 2001=100).....	22	6.253	151.9	152.0	2.0	0.1	0.0	0.0	0.1
Automotive vehicles, parts & engines.....	3	9.048	113.6	113.5	0.5	-0.1	0.3	0.0	-0.1
Consumer goods, excluding automotives.....	4	11.994	114.7	114.8	-1.4	0.0	0.1	0.1	0.1
Nondurables, manufactured.....	40	5.492	114.3	114.0	-1.4	-0.1	0.2	0.2	-0.3
Durables, manufactured.....	41	5.122	111.5	111.6	-2.0	0.0	-0.2	0.0	0.1

¹ Relative importance figures are based on 2011 trade values.

NOTES: Data may be revised in each of the three months after original publication.

Dash = Not available

Table 3. U.S. import price indexes and percent changes for selected categories of goods: December 2012 to December 2013

[December 2005=100, unless otherwise noted]

Description	NAICS	Relative importance Nov. 2013 ¹	Index		Percent change				
			Nov. 2013	Dec. 2013	Annual	Monthly			
					Dec. 2012 to Dec. 2013	Aug. 2013 to Sept. 2013	Sept. 2013 to Oct. 2013	Oct. 2013 to Nov. 2013	Nov. 2013 to Dec. 2013
Nonmanufactured articles.....		17.953	159.4	159.4	-1.6	1.4	-3.1	-5.0	0.0
Agriculture, forestry, fishing and hunting.....	11	1.837	171.3	174.2	5.3	0.1	1.3	-1.4	1.7
Crop production.....	111	1.285	175.8	180.7	5.8	0.1	1.8	-2.3	2.8
Forestry and logging (Dec. 2012=100).....	113	0.184	93.5	91.5	-8.5	-0.2	-0.6	0.2	-2.1
Mining.....	21	16.116	157.8	157.5	-2.4	1.5	-3.6	-5.4	-0.2
Mining (except oil and gas) (Dec. 2006=100).....	212	0.318	129.9	130.0	-6.7	-0.2	-0.2	0.3	0.1
Manufactured articles.....		81.573	115.9	115.9	-1.2	0.0	-0.1	0.1	0.0
Manufactured goods, part 1.....	31	10.694	124.0	123.9	0.2	0.5	-0.1	-0.2	-0.1
Food manufacturing.....	311	2.939	156.3	155.8	0.5	1.5	-0.4	-0.6	-0.3
Beverage and tobacco product manufacturing.....	312	0.896	114.6	114.5	2.2	0.4	0.4	0.3	-0.1
Textile mills (Dec. 2011=100).....	313	0.393	101.1	101.5	-0.8	0.0	0.2	0.0	0.4
Textile product mills.....	314	0.792	114.5	114.2	-1.5	0.0	0.0	-0.2	-0.3
Apparel manufacturing.....	315	3.987	110.3	110.5	-0.4	0.1	0.0	-0.1	0.2
Leather and allied product manufacturing.....	316	1.687	121.8	121.8	0.7	0.0	0.1	0.2	0.0
Manufactured goods, part 2.....	32	17.957	136.0	136.9	-0.1	-0.3	-0.3	0.1	0.7
Wood product manufacturing.....	321	0.610	122.2	121.5	-1.5	1.7	0.4	0.7	-0.6
Paper manufacturing.....	322	1.055	111.2	111.1	0.9	-0.1	0.5	0.0	-0.1
Petroleum and coal products manufacturing.....	324	4.207	159.7	164.4	2.4	-0.8	-1.8	-0.3	2.9
Chemical manufacturing.....	325	9.208	133.8	133.9	-0.7	-0.3	0.2	0.2	0.1
Plastics and rubber products manufacturing.....	326	1.941	124.3	124.5	-2.4	-0.4	-0.2	0.0	0.2
Nonmetallic mineral product manufacturing.....	327	0.852	130.0	129.9	0.6	0.2	0.2	0.1	-0.1
Manufactured goods, part 3.....	33	52.922	108.0	107.8	-1.8	0.1	-0.1	0.1	-0.2
Primary metal manufacturing.....	331	4.097	156.2	155.1	-10.4	1.6	0.1	-0.3	-0.7
Fabricated metal product manufacturing.....	332	2.654	126.3	125.7	-3.4	-0.1	-0.5	0.2	-0.5
Machinery manufacturing.....	333	6.689	121.2	121.0	-0.8	0.0	0.1	0.2	-0.2
Computer and electronic product manufacturing.....	334	16.149	80.6	80.4	-1.7	-0.1	-0.1	0.1	-0.2
Electrical equipment, appliance, and component manufacturing.....	335	4.057	119.0	119.1	-0.5	-0.1	-0.2	-0.1	0.1
Transportation equipment manufacturing.....	336	13.087	111.7	111.7	-0.6	0.1	0.0	0.0	0.0
Furniture and related product manufacturing.....	337	1.275	114.6	114.6	0.7	0.2	0.5	0.0	0.0
Miscellaneous manufacturing.....	339	4.915	121.1	120.9	0.2	0.0	0.1	0.1	-0.2

¹ Relative importance figures are based on 2011 trade values.

NOTES: Data may be revised in each of the three months after original publication.

Dash = Not available

Table 4. U.S. export price indexes and percent changes for selected categories of goods: December 2012 to December 2013

[December 2005=100, unless otherwise noted]

Description	NAICS	Relative importance Nov. 2013 ¹	Index		Percent change				
			Nov. 2013	Dec. 2013	Annual Dec. 2012 to Dec. 2013	Monthly			
						Aug. 2013 to Sept. 2013	Sept. 2013 to Oct. 2013	Oct. 2013 to Nov. 2013	Nov. 2013 to Dec. 2013
Nonmanufactured articles.....		7.379	158.4	160.0	-8.8	1.6	-1.1	-0.3	1.0
Agriculture, forestry, fishing and hunting.....	11	5.344	193.0	193.6	-10.8	1.7	-2.2	-0.6	0.3
Crop production.....	111	4.894	199.0	199.4	-12.0	1.6	-2.4	-0.7	0.2
Mining.....	21	2.035	88.7	91.2	-3.5	1.2	1.8	0.3	2.8
Mining (except oil and gas).....	212	1.377	101.2	101.1	-7.2	0.1	0.7	-0.1	-0.1
Manufactured articles.....		90.238	120.1	120.5	-0.2	0.3	-0.6	0.1	0.3
Manufactured goods, part 1.....	31	7.059	150.5	151.2	-0.7	-0.2	-0.2	-0.3	0.5
Food manufacturing.....	311	4.961	172.6	173.7	-0.9	-0.2	0.1	-0.6	0.6
Beverage and tobacco product manufacturing.....	312	0.566	124.9	123.9	-1.8	-0.4	-1.6	1.7	-0.8
Manufactured goods, part 2.....	32	26.631	132.7	134.4	1.7	0.5	-1.7	0.4	1.3
Wood product manufacturing.....	321	0.443	122.6	122.3	7.9	0.8	1.2	0.2	-0.2
Paper manufacturing.....	322	1.858	122.7	122.8	3.3	0.4	0.0	0.5	0.1
Petroleum and coal products manufacturing.....	324	7.075	165.0	173.5	7.4	1.4	-5.7	2.2	5.2
Chemical manufacturing.....	325	14.200	129.1	129.0	-1.2	0.1	-0.2	-0.5	-0.1
Plastics and rubber products manufacturing.....	326	2.256	120.3	120.1	0.7	0.3	-0.2	0.0	-0.2
Nonmetallic mineral product manufacturing.....	327	0.799	112.0	112.0	1.1	0.0	0.0	0.1	0.0
Manufactured goods, part 3.....	33	56.549	112.2	112.1	-1.0	0.2	-0.1	0.0	-0.1
Primary metal manufacturing.....	331	4.673	150.0	147.4	-14.6	2.5	-0.4	-0.6	-1.7
Fabricated metal product manufacturing.....	332	2.781	131.2	132.0	0.1	0.2	-0.1	0.1	0.6
Machinery manufacturing.....	333	11.843	122.9	122.9	1.5	0.1	0.0	0.2	0.0
Computer and electronic product manufacturing.....	334	14.260	88.2	88.0	-1.1	-0.2	-0.5	0.2	-0.2
Electrical equipment, appliance, and component manufacturing.....	335	3.335	113.5	113.4	0.4	-0.3	0.0	-0.5	-0.1
Transportation equipment manufacturing.....	336	14.348	118.2	118.2	1.2	0.0	0.2	0.0	0.0
Furniture and related product manufacturing (Dec. 2011=100).....	337	0.325	107.6	107.6	2.7	-0.3	0.1	-0.1	0.0
Miscellaneous manufacturing.....	339	4.986	121.3	121.6	-0.1	0.2	-0.2	0.2	0.2

¹ Relative importance figures are based on 2011 trade values.

NOTES: Data may be revised in each of the three months after original publication.

Dash = Not available

Table 5. U.S. import price indexes and percent changes for selected categories of goods: December 2012 to December 2013

[2000=100, unless otherwise noted]

Description	Harmonized system	Relative importance Nov. 2013 ¹	Index		Percent change				
			Nov. 2013	Dec. 2013	Annual	Monthly			
					Dec. 2012 to Dec. 2013	Aug. 2013 to Sept. 2013	Sept. 2013 to Oct. 2013	Oct. 2013 to Nov. 2013	Nov. 2013 to Dec. 2013
Live animals; animal products.....	I	1.230	188.3	187.8	15.1	1.5	1.6	-0.8	-0.3
Meat and edible meat offal.....	02	0.259	221.1	222.3	2.3	-2.2	1.3	-1.3	0.5
Fish and crustaceans, molluscs and other aquatic invertebrates.....	03	0.702	143.3	142.4	25.9	3.1	2.1	-1.5	-0.6
Vegetable products.....	II	1.560	197.2	202.4	-1.7	1.1	-0.7	-1.7	2.6
Edible vegetables, roots, and tubers.....	07	0.393	376.4	392.8	12.3	6.1	3.0	-2.6	4.4
Edible fruit and nuts; peel of citrus fruit or melons.....	08	0.414	109.9	112.0	2.9	0.5	-2.9	-0.6	1.9
Coffee, tea, mate and spices.....	09	0.342	217.8	226.0	-2.7	-1.7	-1.2	-2.2	3.8
Animal or vegetable fats and oils (Dec. 2009=100).....	III	0.253	116.1	118.8	0.3	0.3	0.1	0.3	2.3
Prepared foodstuffs, beverages, and tobacco.....	IV	2.470	159.4	158.4	0.4	0.2	0.4	0.1	-0.6
Sugars and sugar confectionary (Dec. 2012=100).....	17	0.191	89.0	87.1	-12.9	-1.1	-0.4	-0.3	-2.1
Cocoa and cocoa preparations (Dec. 2009=100).....	18	0.231	101.4	100.5	9.0	0.3	1.6	-0.6	-0.9
Preparations of cereals, flour, starch or milk; bakers' wares (Dec. 2007=100).....	19	0.242	130.7	130.6	0.8	0.0	0.1	0.0	-0.1
Preparations of vegetables, fruit, nuts, or other parts of plants.....	20	0.322	165.9	161.6	-2.8	0.1	0.1	0.4	-2.6
Beverages, spirits, and vinegar.....	22	0.884	125.2	125.4	2.5	0.2	0.2	0.3	0.2
Mineral products.....	V	20.436	322.9	323.6	-2.1	0.8	-3.4	-4.5	0.2
Mineral fuels, oils and residuals, bituminous substances and mineral waxes.....	27	20.157	319.7	320.5	-2.0	0.8	-3.4	-4.5	0.3
Products of the chemical or allied industries.....	VI	8.645	148.5	148.7	-1.6	-0.1	0.2	0.2	0.1
Inorganic chemicals.....	28	0.714	311.8	308.3	-20.0	-1.7	-0.4	0.4	-1.1
Organic chemicals.....	29	2.650	135.3	136.5	-2.4	0.4	0.0	0.1	0.9
Pharmaceutical products.....	30	3.479	125.9	125.8	5.0	0.1	0.1	0.2	-0.1
Fertilizers (Dec. 2009=100).....	31	0.345	107.3	108.2	-17.2	-3.4	-1.2	1.2	0.8
Tanning extracts; dye, pigments, varnish, paints & putty (Dec. 2011=100).....	32	0.167	94.3	94.1	1.1	0.4	-0.7	0.2	-0.2
Miscellaneous chemical products.....	38	0.475	98.7	98.7	-3.8	-0.2	-0.3	0.1	0.0
Plastics and articles thereof; rubber and articles thereof.....	VII	3.192	149.1	148.6	-2.2	-0.3	-0.3	-0.1	-0.3
Plastics and articles thereof.....	39	1.995	147.9	147.5	1.4	0.3	-0.1	-0.3	-0.3
Rubber and articles thereof.....	40	1.197	152.5	152.0	-7.7	-1.3	-0.5	0.1	-0.3
Raw hides, skins, leather, furskins, travel goods, etc.....	VIII	0.608	126.1	126.2	0.1	0.0	0.1	0.4	0.1
Articles of leather; travel goods, bags, etc. of various materials.....	42	0.564	127.5	127.7	0.6	0.0	0.1	0.4	0.2
Wood, wood charcoal, cork, straw, basketware and wickerwork.....	IX	0.646	148.4	147.4	-1.4	1.8	0.3	0.8	-0.7
Woodpulp, recovered paper, and paper products.....	X	1.158	114.4	114.1	0.9	-0.1	0.5	0.0	-0.3
Pulp wood, waste paper, and paperboard (Dec. 2011=100).....	47	0.185	105.3	105.2	7.9	-0.8	2.5	0.0	-0.1
Paper and paperboard; articles of paper pulp, paper or paperboard.....	48	0.769	108.0	107.7	-0.4	0.1	0.2	0.0	-0.3
Textile and textile articles.....	XI	5.025	113.8	113.8	-0.6	0.1	-0.1	0.0	0.0

See footnotes at end of table.

Table 5. U.S. import price indexes and percent changes for selected categories of goods: December 2012 to December 2013 — Continued
 [2000=100, unless otherwise noted]

Description	Harmoni- zied system	Relative importance Nov. 2013 ¹	Index		Percent change				
			Nov. 2013	Dec. 2013	Annual	Monthly			
					Dec. 2012 to Dec. 2013	Aug. 2013 to Sept. 2013	Sept. 2013 to Oct. 2013	Oct. 2013 to Nov. 2013	Nov. 2013 to Dec. 2013
Articles of apparel and clothing accessories, knitted or crocheted.....	61	1.960	102.8	102.8	-1.9	0.1	-0.5	0.2	0.0
Articles of apparel and clothing accessories, not knitted or crocheted.....	62	1.869	118.3	118.5	1.2	0.2	0.3	-0.3	0.2
Made-up or worn textile articles.....	63	0.555	107.6	107.2	-1.3	0.0	0.0	-0.3	-0.4
Headgear, umbrellas, artificial flowers, etc...	XII	1.384	121.1	121.1	0.5	0.0	0.1	0.1	0.0
Footwear and parts of such articles.....	64	1.185	120.1	120.2	0.3	0.1	0.1	0.0	0.1
Stone, plaster, cement, asbestos, ceramics, glass etc.....	XIII	0.785	133.0	133.0	1.2	0.1	0.2	0.0	0.0
Articles of stone, plaster, cement, asbestos, or mica (Dec. 2001=100).....	68	0.252	126.1	125.9	1.1	0.0	0.0	-0.1	-0.2
Ceramic products.....	69	0.245	140.9	141.0	0.0	0.0	0.0	0.0	0.1
Glass and glassware.....	70	0.288	129.9	129.8	2.2	0.2	0.5	0.2	-0.1
Pearls, stones, precious metals, imitation jewelry, and coins.....	XIV	3.048	181.7	178.3	-13.4	2.2	-0.2	-0.7	-1.9
Base metals and articles of base metals. ...	XV	5.003	179.8	180.1	-1.9	0.4	0.1	0.2	0.2
Iron and steel.....	72	1.154	215.9	218.2	0.0	-0.7	0.7	0.4	1.1
Articles of iron or steel.....	73	1.490	153.3	153.7	-2.5	-0.1	-0.2	0.1	0.3
Copper and articles thereof.....	74	0.467	333.3	333.9	-6.0	3.6	1.1	-0.6	0.2
Nickel and articles thereof (Dec. 2009=100).....	75	0.130	87.4	85.8	-11.8	2.1	-1.3	1.4	-1.8
Aluminum and articles thereof.....	76	0.677	136.0	134.4	-2.3	0.4	0.1	0.1	-1.2
Tools, implements, cutlery, spoons and forks, of base metal; parts thereof.....	82	0.393	129.8	129.8	1.4	0.1	0.0	0.4	0.0
Miscellaneous articles of base metal.....	83	0.437	135.5	135.5	-0.6	0.0	-0.1	0.2	0.0
Machinery, electrical equipment, TV image and sound recorders, parts, etc.....	XVI	26.699	84.6	84.5	-1.5	-0.2	-0.1	0.1	-0.1
Machinery and mechanical appliances; parts thereof.....	84	13.863	89.5	89.3	-0.9	-0.1	0.0	0.1	-0.2
Electrical machinery and equip, sound and TV recorders & reproducers, parts.....	85	12.836	79.9	79.8	-2.3	-0.2	-0.1	0.0	-0.1
Vehicles, aircraft, vessels and associated transport equipment.....	XVII	10.857	116.0	116.0	-0.4	0.0	0.0	0.0	0.0
Motor vehicles and their parts.....	87	9.898	114.7	114.7	-0.6	0.0	0.0	0.0	0.0
Aircraft, spacecraft, and parts thereof (Dec. 2002=100).....	88	0.885	120.3	120.3	0.8	0.1	0.0	0.0	0.0
Optical, photo, measuring, medical & musical instruments; & timepieces.....	XVIII	3.412	104.4	104.4	0.6	0.1	0.1	0.2	0.0
Optical, photographic, measuring and medical instruments.....	90	3.094	101.2	101.2	0.5	0.1	0.1	0.1	0.0
Clocks and watches and parts thereof.....	91	0.258	142.1	141.7	0.4	0.2	0.2	0.5	-0.3
Miscellaneous manufactured articles.....	XX	3.525	113.3	113.2	0.4	0.2	0.3	0.0	-0.1
Furniture & stuffed furnishings; lamps & lighting fittings, nesoi; prefab bldgs.....	94	1.970	117.3	117.0	0.3	0.3	0.3	0.0	-0.3
Toys, games and sports equipment; parts and accessories thereof.....	95	1.357	105.4	105.5	0.4	0.1	0.2	0.0	0.1
Miscellaneous manufactured articles.....	96	0.198	138.6	138.7	2.4	-0.4	0.0	0.1	0.1

¹ Relative importance figures are based on 2011 trade values.

NOTES: Data may be revised in each of the three months after original publication.

Dash = Not available

Table 6. U.S. export price indexes and percent changes for selected categories of goods: December 2012 to December 2013

[2000=100, unless otherwise noted]

Description	Harmoni- zied system	Relative importance Nov. 2013 ¹	Index		Percent change				
			Nov. 2013	Dec. 2013	Annual	Monthly			
					Dec. 2012 to Dec. 2013	Aug. 2013 to Sept. 2013	Sept. 2013 to Oct. 2013	Oct. 2013 to Nov. 2013	Nov. 2013 to Dec. 2013
Live animals; animal products.....	I	2.147	224.1	226.7	1.2	1.4	1.0	1.0	1.2
Meat & edible meat offal (Dec. 2006=100)...	02	1.190	167.3	168.5	0.0	0.8	-1.1	0.7	0.7
Fish and crustaceans, molluscs and other aquatic invertebrates.....	03	0.400	198.6	204.3	0.7	2.5	2.5	-0.4	2.9
Vegetable products.....	II	4.918	244.6	244.2	-12.2	1.3	-2.5	0.5	-0.2
Edible fruit and nuts; peel of citrus fruit or melons.....	08	1.141	176.5	174.2	12.0	-1.4	4.1	7.4	-1.3
Cereals.....	10	1.695	246.4	244.7	-27.2	-1.9	-4.5	-2.3	-0.7
Oilseeds and misc. grains, seeds, fruits, plants, straw and fodder.....	12	1.550	260.9	271.1	-8.3	6.7	-4.7	-2.8	3.9
Animal or vegetable fats and oils (Dec. 2009=100).....	III	0.268	116.3	116.4	-11.8	-2.5	-0.8	-4.2	0.1
Prepared foodstuffs, beverages, and tobacco.....	IV	3.006	165.3	166.1	0.0	-0.1	-0.6	-0.4	0.5
Preparations of vegetables, fruit, nuts or other parts of plants (Dec. 2009=100).....	20	0.335	112.6	112.5	1.0	0.2	-0.2	-0.1	-0.1
Beverages, spirits, and vinegar (Dec. 2008=100).....	22	0.613	113.0	112.5	2.1	0.3	-0.3	0.2	-0.4
Residues and waste from the food industries; prepared animal feed.....	23	0.736	261.3	266.6	-4.3	-0.5	-1.7	-1.5	2.0
Mineral products.....	V	9.215	297.5	309.0	4.0	1.3	-4.2	1.8	3.9
Ores, slag and ash (Dec. 2012=100).....	26	0.454	92.2	90.9	-9.1	3.3	1.6	0.8	-1.4
Mineral fuels, oils and residuals, bituminous substances and mineral waxes.....	27	8.577	294.8	307.2	4.8	1.3	-4.6	1.9	4.2
Products of the chemical or allied industries.....	VI	11.381	151.0	151.1	-2.1	-0.1	-0.5	-0.5	0.1
Inorganic chemicals.....	28	0.996	177.4	176.6	-4.3	-1.3	-1.1	-0.6	-0.5
Organic chemicals.....	29	3.185	160.4	160.6	-3.4	0.6	-2.3	-0.9	0.1
Pharmaceutical products.....	30	2.681	121.3	120.9	-3.0	-0.2	0.2	0.4	-0.3
Fertilizers (Dec. 2012=100).....	31	0.319	79.7	81.0	-19.0	-3.8	-2.4	-7.3	1.6
Essential oils and resinoids; perfumery cosmetic or toilet preparations.....	33	0.717	135.5	136.1	-0.3	-0.4	0.2	0.1	0.4
Soap; lubricants; waxes, polishing or scouring products; candles, pastes.....	34	0.461	121.4	121.4	-1.1	0.1	0.4	0.0	0.0
Miscellaneous chemical products.....	38	1.781	154.1	155.6	2.6	0.1	0.2	-0.5	1.0
Plastics and articles thereof; rubber and articles thereof.....	VII	5.333	149.7	149.6	1.4	0.3	0.7	-0.2	-0.1
Plastics and articles thereof.....	39	4.343	144.1	144.0	3.7	0.5	1.0	-0.4	-0.1
Rubber and articles thereof.....	40	0.990	173.8	174.0	-7.3	-0.2	-1.0	0.8	0.1
Raw hides, skins, leather, furskins, travel goods, etc.....	VIII	0.407	145.7	148.3	8.6	-1.8	2.7	-0.1	1.8
Wood, wood charcoal, cork, straw, basketware and wickerwork.....	IX	0.608	117.0	116.2	5.6	0.5	0.9	0.4	-0.7
Woodpulp, recovered paper, and paper products.....	X	2.312	123.1	122.4	4.3	0.3	0.3	0.2	-0.6
Woodpulp and recovered paper.....	47	0.625	128.4	126.4	6.2	0.4	1.0	0.8	-1.6
Paper and paperboard; articles of paper pulp, paper or paperboard.....	48	1.226	120.8	120.7	3.2	0.5	-0.2	0.1	-0.1
Printed material.....	49	0.461	133.0	132.4	5.2	0.0	0.8	0.0	-0.5
Textile and textile articles.....	XI	1.854	131.0	130.8	3.8	0.6	-0.3	-0.8	-0.2
Cotton, including yarns and woven fabrics thereof.....	52	0.523	144.8	143.6	8.5	2.0	-0.2	-2.7	-0.8

See footnotes at end of table.

Table 6. U.S. export price indexes and percent changes for selected categories of goods: December 2012 to December 2013 — Continued
 [2000=100, unless otherwise noted]

Description	Harmoni- zied system	Relative importance Nov. 2013 ¹	Index		Percent change				
			Nov. 2013	Dec. 2013	Annual	Monthly			
					Dec. 2012 to Dec. 2013	Aug. 2013 to Sept. 2013	Sept. 2013 to Oct. 2013	Oct. 2013 to Nov. 2013	Nov. 2013 to Dec. 2013
Stone, plaster, cement, asbestos, ceramics, glass etc.....	XIII	0.770	118.6	118.6	0.3	0.0	0.3	0.0	0.0
Glass and glassware.....	70	0.393	97.5	97.5	-1.2	0.1	-0.1	0.1	0.0
Pearls, stones, precious metals, imitation jewelry, and coins.....	XIV	4.664	244.6	240.1	-16.0	2.9	-0.9	-0.6	-1.8
Base metals and articles of base metals. ...	XV	5.321	165.2	165.1	-4.0	0.1	0.6	0.0	-0.1
Iron and steel.....	72	1.480	186.7	187.2	-7.2	0.4	1.2	0.5	0.3
Articles of iron or steel.....	73	1.323	168.0	169.1	-1.2	-0.7	0.8	-0.8	0.7
Copper and articles thereof.....	74	0.604	236.9	233.8	-7.9	1.3	1.2	-0.3	-1.3
Aluminum and articles thereof.....	76	0.836	121.1	119.9	-4.8	-0.3	-0.5	0.3	-1.0
Tools, implements, cutlery, spoons and forks, of base metal; parts thereof.....	82	0.412	134.2	134.2	0.8	0.1	0.8	0.1	0.0
Miscellaneous articles of base metal.....	83	0.329	147.3	147.2	1.1	0.1	0.0	0.0	-0.1
Machinery, electrical equipment, TV image and sound recorders, parts, etc.....	XVI	28.170	97.0	97.0	0.2	-0.1	-0.2	0.1	0.0
Machinery and mechanical appliances; parts thereof.....	84	16.946	111.8	111.7	1.1	0.1	-0.1	0.4	-0.1
Electrical machinery and equipment and parts and accessories thereof.....	85	11.224	81.1	81.0	-1.2	-0.2	-0.5	-0.1	-0.1
Vehicles, aircraft, vessels and associated transport equipment.....	XVII	12.165	128.5	128.5	1.3	0.1	0.2	0.0	0.0
Motor vehicles and their parts.....	87	8.251	114.3	114.2	1.1	0.0	0.4	0.0	-0.1
Optical, photo, measuring, medical & musical instruments; & timepieces.....	XVIII	5.961	107.2	107.2	0.8	0.2	0.0	0.1	0.0
Miscellaneous manufactured articles.....	XX	1.344	109.8	109.8	-1.2	-0.5	0.0	-0.5	0.0
Furniture; stuffed furnishings; lamps and lighting fittings nesoi;.....	94	0.731	121.3	121.3	-0.2	-0.9	0.6	-0.7	0.0
Toys, games and sports equipment; parts and accessories thereof.....	95	0.504	88.5	88.5	-2.6	0.1	-0.8	-0.2	0.0

¹ Relative importance figures are based on 2011 trade values.

NOTES: Data may be revised in each of the three months after original publication.

Dash = Not available

Table 7. U.S. import price indexes and percent changes by locality of origin: December 2012 to December 2013
 [2000=100, unless otherwise noted]

Description	Relative importance Nov. 2013 ¹	Index		Percent change				
		Nov. 2013	Dec. 2013	Annual	Monthly			
				Dec. 2012 to Dec. 2013	Aug. 2013 to Sept. 2013	Sept. 2013 to Oct. 2013	Oct. 2013 to Nov. 2013	Nov. 2013 to Dec. 2013
Industrialized Countries²	100.000	130.1	130.0	-0.8	0.1	-0.7	-0.8	-0.1
Nonmanufactured articles.....	11.049	213.9	214.7	-0.3	-1.8	-5.6	-7.9	0.4
Manufactured articles.....	88.331	123.2	123.0	-1.0	0.2	0.0	0.2	-0.2
Other Countries³	100.000	137.4	137.4	-1.0	0.3	-0.6	-0.9	0.0
Nonmanufactured articles.....	21.931	335.4	334.0	-2.7	2.1	-2.8	-3.9	-0.4
Manufactured articles.....	77.730	109.9	110.0	-0.5	-0.2	0.0	0.0	0.1
Canada	100.000	147.0	147.1	-1.5	-0.3	-2.3	-2.3	0.1
Nonmanufactured articles.....	28.239	204.7	205.5	0.4	-2.0	-5.7	-8.0	0.4
Manufactured articles.....	70.678	135.6	135.4	-2.4	0.4	-0.7	0.1	-0.1
European Union⁴	100.000	136.7	136.4	1.9	0.3	0.5	0.2	-0.2
Nonmanufactured articles.....	1.032	359.4	356.5	-3.6	1.5	-3.4	0.3	-0.8
Manufactured articles.....	98.968	133.0	132.7	2.0	0.3	0.6	0.2	-0.2
France (Dec. 2003=100)	100.000	122.5	122.5	1.7	0.2	0.2	0.3	0.0
Germany (Dec. 2003=100)	100.000	117.5	117.3	2.4	0.3	0.9	0.2	-0.2
United Kingdom (Dec. 2003=100)	100.000	129.3	129.1	-2.6	0.7	0.2	0.4	-0.2
Latin America⁵	100.000	171.0	171.1	-1.7	0.3	-1.0	-1.7	0.1
Nonmanufactured articles.....	31.171	354.6	354.9	-1.6	1.1	-3.4	-4.8	0.1
Manufactured articles.....	68.456	130.9	130.9	-1.7	-0.1	0.2	-0.2	0.0
Mexico (Dec. 2003=100)	100.000	140.9	140.6	-1.5	0.0	-1.0	-1.1	-0.2
Nonmanufactured articles (Dec. 2008=100).....	17.984	186.2	186.5	-2.2	1.0	-4.3	-6.1	0.2
Manufactured articles (Dec. 2008=100)...	81.708	93.2	93.0	-1.2	-0.2	-0.2	0.0	-0.2
Pacific Rim (Dec. 2003=100)⁶	100.000	103.1	103.0	-1.2	0.1	0.0	0.0	-0.1
China (Dec. 2003=100)	100.000	103.7	103.7	-0.8	0.1	-0.1	0.1	0.0
Japan	100.000	99.6	99.3	-3.4	-0.1	-0.2	-0.1	-0.3
Asian NICs⁷	100.000	90.9	89.9	-0.1	-0.2	0.0	0.3	-1.1
ASEAN (Dec. 2003=100)⁸	100.000	104.7	104.6	0.4	0.4	0.0	-0.1	-0.1
Asia Near East (Dec. 2003=100)⁹	100.000	256.2	255.0	-5.8	0.5	-2.2	-2.0	-0.5

¹ Relative importance figures are based on 2011 trade values.

² Western Europe, Canada, Japan, Australia, New Zealand and South Africa.

³ Eastern Europe, Latin America, OPEC countries, and other countries in Asia, Africa and the Western Hemisphere.

⁴ European Union countries.

⁵ Mexico, Central America, South America and the Caribbean.

⁶ China, Japan, Australia, Brunei, Indonesia, Macao, Malaysia, New Zealand, Papua New Guinea, Philippines and the Asian Newly Industrialized Countries.

⁷ Asian Newly Industrialized Countries - Hong Kong, Singapore, South Korea and Taiwan.

⁸ Association of Southeast Asian Nations - Brunei, Cambodia, Indonesia, Laos, Malaysia, Myanmar, Philippines, Singapore, Thailand and Vietnam.

⁹ Bahrain, Iran, Iraq, Israel, Jordan, Kuwait, Lebanon, Oman, Qatar, Saudi Arabia, Syria, United Arab Emirates and Yemen.

NOTES: Data may be revised in each of the three months after original publication.

Regions are not mutually exclusive.

Dash = Not available

Table 8. U.S. international price indexes and percent changes for selected transportation services: December 2012 to December 2013

[2000=100, unless otherwise noted]

Description	Relative importance Nov. 2013 ¹	Index		Percent change				
		Nov. 2013	Dec. 2013	Annual Dec. 2012 to Dec. 2013	Monthly			
					Aug. 2013 to Sept. 2013	Sept. 2013 to Oct. 2013	Oct. 2013 to Nov. 2013	Nov. 2013 to Dec. 2013
Air Freight								
Import Air Freight	100.000	178.1	177.3	0.9	0.6	0.9	2.2	-0.4
Europe (Dec. 2003=100).....	23.380	180.8	179.4	10.6	2.3	1.0	7.2	-0.8
Asia.....	72.403	154.3	153.8	-1.9	0.1	0.8	0.8	-0.3
Export Air Freight	100.000	147.7	147.4	0.3	0.8	0.3	-0.1	-0.2
Europe (Dec. 2006=100).....	35.804	132.5	132.2	2.0	0.5	0.5	-0.5	-0.2
Inbound Air Freight	100.000	165.5	164.9	-1.6	0.6	0.8	1.7	-0.4
Europe (Dec. 2003=100).....	22.876	157.8	156.9	5.2	1.8	0.9	4.5	-0.6
Asia.....	66.682	148.6	148.1	-4.0	0.3	0.9	0.9	-0.3
Outbound Air Freight	100.000	146.8	146.9	-0.7	0.1	0.3	0.4	0.1
Europe (Dec. 2003=100).....	28.437	163.9	163.9	1.4	0.3	0.4	1.8	0.0
Asia.....	52.050	139.3	139.6	-1.4	-0.1	0.4	-0.1	0.2
Air Passenger Fares								
Import Air Passenger Fares	100.000	196.1	210.1	8.2	0.0	4.3	3.4	7.1
Europe.....	43.882	223.9	218.4	5.4	4.7	3.5	2.4	-2.5
Asia.....	23.792	149.4	172.7	0.8	-6.5	2.3	-0.1	15.6
Latin America/Caribbean.....	9.014	170.6	187.6	1.4	-6.3	1.2	3.9	10.0
Export Air Passenger Fares	100.000	177.3	194.0	4.1	-10.3	-2.8	-1.7	9.4
Europe.....	29.711	221.4	217.8	0.7	-10.4	-3.5	2.4	-1.6
Asia.....	27.729	148.7	163.6	-9.2	-23.4	-3.7	-0.5	10.0
Latin America/Caribbean.....	22.747	191.9	214.4	7.6	-8.1	4.9	-1.8	11.7

¹ Relative importance figures are based on 2011 trade values.

NOTES: Data may be revised in each of the three months after original publication.

Dash = Not available

TECHNICAL NOTE

Import and Export Merchandise and Services Price Indexes -- All indexes use a modified Laspeyres formula and are not seasonally adjusted. Price indexes are reweighted annually, with a two-year lag in the weights. Published series use a base year of 2000=100 where possible. More detailed index series and additional information may be obtained at <http://www.bls.gov/mxp>, or by calling (202) 691-7101.

Merchandise Goods Classification Systems -- The merchandise price indexes are published using three classification systems. Items are classified by end use according to the Bureau of Economic Analysis Classification System, by industry according to the North American Industry Classification System (NAICS), and by product category according to the Harmonized System (HS). While classification by end use and product category are self-explanatory, some notes are in order for classifying items by industry. In the NAICS imports and exports tables, items are classified by output industry, not input industry. As an example, NAICS import index 326 (plastics and rubber products manufacturing) include outputs such as manufactured plastic rather than inputs such as petroleum. The NAICS classification structure also matches the classification system used by the PPI (Producer Price Index) to produce the NAICS primary products indexes.

Import Price Indexes -- Products have been classified by the Harmonized Tariff Schedule of the United States Annotated (TSUSA). Import prices are based on U.S. dollar prices paid by the U.S. importer. The prices are generally either "free on board" (f.o.b.) foreign port or "cost, insurance, and freight" (c.i.f.) U.S. port transaction prices, depending on the practices of the individual industry. The index for crude petroleum is calculated from data collected by the U.S. Department of Energy.

Export Price Indexes -- Products have been classified by the Harmonized Schedule B classification system of the U.S. Bureau of the Census. The prices used are generally either "free alongside ship" (f.a.s.) factory or "free on board" (f.o.b.) transaction prices, depending on the practices of the individual industry. Prices used in the grain index, excluding rice, are obtained from the U.S. Department of Agriculture.

Services Price Indexes -- Starting in September 2008 the Import Air Passenger Fares Indexes represent changes in the average revenue per passenger received by foreign carriers from U.S. residents and are calculated from data obtained from an airline consulting service. These data include tickets sold by travel agencies and travel websites. Tickets sold directly by the airlines are excluded, as are frequent flyer tickets generally. Starting in January 2008 the Export Air Passenger Fares Indexes represent changes in the average revenue per passenger received by U.S. carriers from foreign residents and are calculated from data collected directly from airlines. These data include frequent flyer tickets and those sold by consolidators. Taxes and fees are included in the Import Air Passenger Fares Index and excluded from the Export Air Passenger Fares Index. The Air Freight Indexes are calculated from data collected directly from airlines. These data exclude mail and passenger baggage. The scope of the service being priced is the movement of freight from airport to airport only, and does not include any ground transportation or port service. The Air Freight Indexes are presented using two definitions: Balance of Payments (which represent transactions between U.S. and foreign residents) and International (which represent transactions inbound to and outbound from the U.S.). Fact sheets specifying detailed information for each services industry are available at <http://www.bls.gov/mxp> under "MXP Publications."

Import Indexes by Locality of Origin -- Prices used in these indexes are a subset of the data collected for the Import Price Indexes. Beginning with January 2002, the indexes are defined by locality of origin using a nomenclature based upon the North American Industry Classification System (NAICS). Nonmanufactured goods are defined as NAICS 11 and 21 and manufactured goods are defined as NAICS 31-33.

Revision Policy -- To reflect the availability of late reports and corrections by respondents, monthly data may be revised in each of the three months after original publication. After three months, no further data revisions take place. So, for example, data released in the January release will be subject to revision in the releases for February, March, and April.

Uses of the Data -- The primary use of the indexes is to deflate trade statistics, notably the foreign trade sector of the National Income and Product Accounts constructed by the Department of Commerce. Other published indexes are useful for general market analysis. For trade in international services, Balance of Payments indexes are used for deflating National Income and Product Accounts, while International indexes are more appropriate for market analysis. Merchandise and services indexes also can be used to study U.S. competitiveness and to compute price elasticities, and the merchandise import indexes by country or region of origin are useful in terms of trade analysis.

E-Mail Subscription -- The U.S. Import and Export Price Indexes news release is available through an e-mail subscription service at (<http://www.bls.gov/bls/list.htm>).

Additional Information -- More detailed data are available on the Import/Export Price Indexes home page at (<http://www.bls.gov/mxp>). For technical assistance in using the BLS Internet site, send e-mail to (labstat.helpdesk@bls.gov). For Import/Export Price Index data requests, send e-mail to (mxpinfo@bls.gov).

Information from this release will be made available to sensory impaired individuals upon request. Voice phone: 202-691-5200; Federal Relay Service: 1-800-877-8339.