

Transmission of material in this release is embargoed until
8:30 a.m. (EST) Friday, February 12, 2016

USDL-16-0273

Technical information: (202) 691-7101 • MXPinfo@bls.gov • www.bls.gov/mxp
Media contact: (202) 691-5902 • PressOffice@bls.gov

U.S. IMPORT AND EXPORT PRICE INDEXES – JANUARY 2016

In January, prices for U.S. imports decreased 1.1 percent for the second consecutive month, the U.S. Bureau of Labor Statistics reported today. In both months, the declines were primarily driven by lower fuel prices. U.S. export prices also fell in January, decreasing 0.8 percent. The decline followed a 1.1-percent drop the previous month.

Chart 1. One-month percent change in the Import Price Index: January 2015 – January 2016

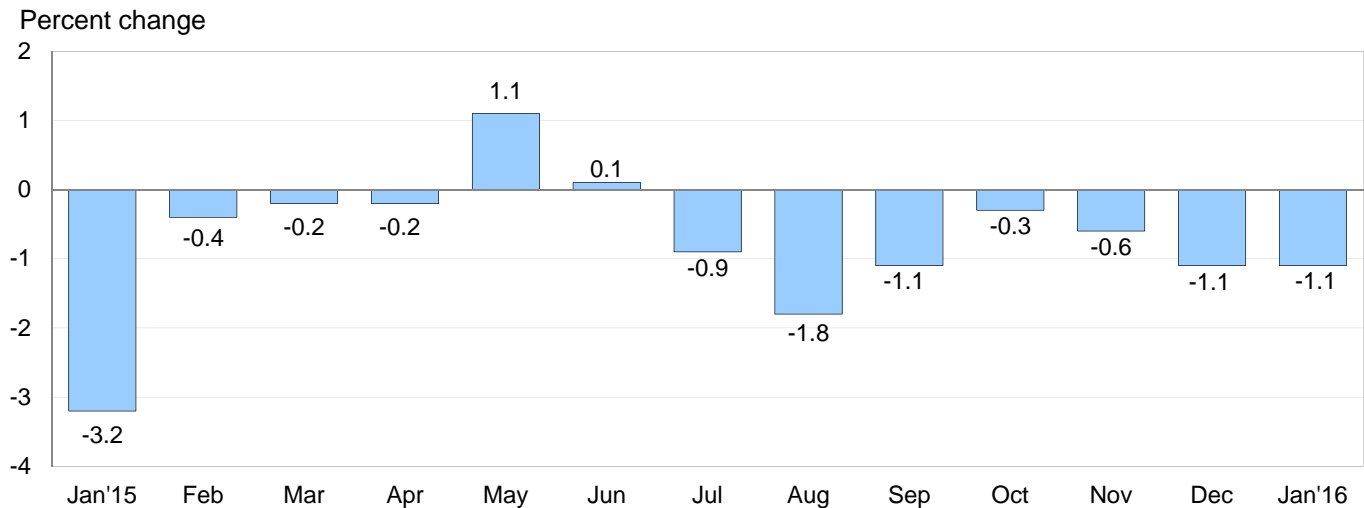
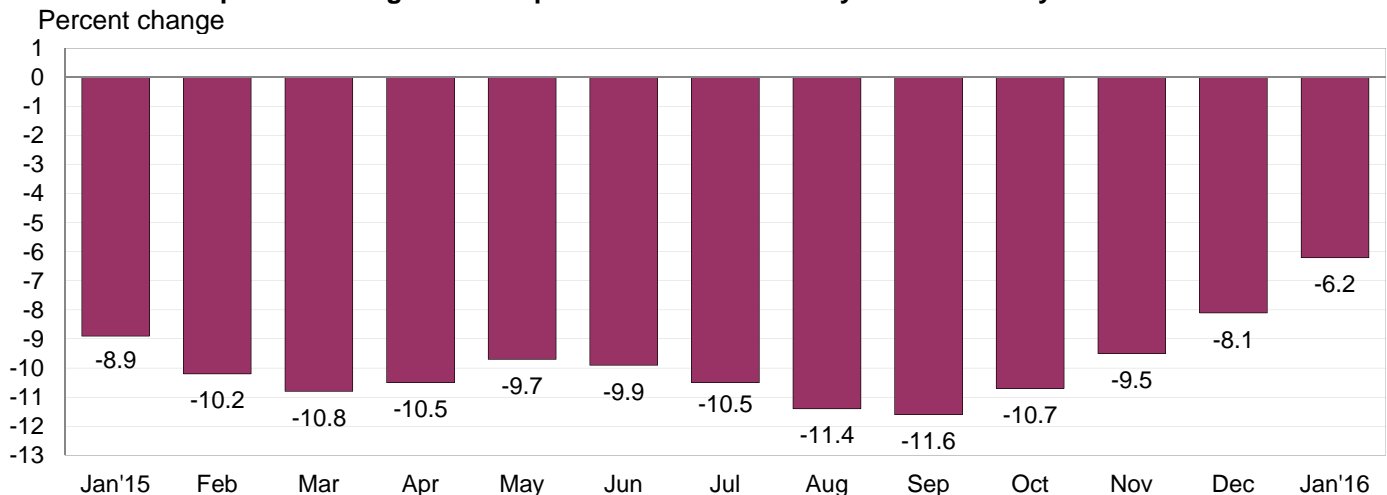


Chart 2. 12-month percent change in the Import Price Index: January 2015 – January 2016



All Imports: The price index for overall imports fell 1.1 percent in January, the largest monthly decrease for the index since a 1.8-percent drop in August 2015. Both fuel and nonfuel prices continued to trend down. Import prices fell 6.2 percent over the past year. Despite declining in January, the 12-month drop in import prices was the smallest over-the-year decrease since the index fell 5.6 percent between December 2013 and December 2014.

Fuel Imports: Import fuel prices declined 12.4 percent in January, the largest 1-month drop since a 12.7-percent decline in August 2015. Import fuel prices have not risen on a monthly basis since a 1.5-percent advance in June 2015. The January drop was led by a 13.4-percent decline in petroleum prices, although natural gas prices also fell, decreasing 3.2 percent. The price index for import fuel declined 34.5 percent for the year ended in January, while over the same period petroleum prices fell 35.3 percent and natural gas prices decreased 40.1 percent.

All Imports Excluding Fuel: In January, prices for nonfuel imports declined 0.2 percent after declining 0.3 percent in each of the past 6 months. Lower prices for nonfuel industrial supplies and materials as well as capital goods drove the January drop in nonfuel import prices. In contrast, the price indexes for foods, feeds, and beverages; automotive vehicles; and consumer goods all rose in January. Nonfuel import prices decreased 2.9 percent over the past 12 months with each of the major import categories factoring into the decline.

Table A. Percent change in Import and Export Price Indexes, selected categories

Month	IMPORTS			EXPORTS		
	All imports	Fuel imports	Nonfuel imports	All exports	Agricultural exports	Non-agricultural exports
2015						
January.....	-3.2	-20.1	-0.7	-1.7	-1.4	-1.8
February.....	-0.4	-1.9	-0.2	-0.2	-2.2	0.2
March.....	-0.2	1.5	-0.4	0.0	-1.6	0.2
April.....	-0.2	1.8	-0.3	-0.6	-0.9	-0.7
May.....	1.1	10.8	0.0	0.5	-1.3	0.6
June.....	0.1	1.5	-0.2	-0.3	-1.6	-0.1
July.....	-0.9	-6.1	-0.3	-0.4	1.0	-0.6
August.....	-1.8	-12.7	-0.3	-1.4	-2.5	-1.3
September.....	-1.1	-8.4	-0.3	-0.6	-1.4	-0.5
October.....	-0.3 ^r	-0.4	-0.3	-0.2	0.1	-0.3
November.....	-0.6 ^r	-4.1 ^r	-0.3 ^r	-0.7	-0.9	-0.7
December.....	-1.1 ^r	-8.7 ^r	-0.3	-1.1	-1.0	-1.1 ^r
2016						
January.....	-1.1	-12.4	-0.2	-0.8	-1.1	-0.8
Jan. 2014 to 2015.....	-8.9	-43.8	-0.9	-5.0	-6.4	-4.9
Jan. 2015 to 2016.....	-6.2	-34.5	-2.9	-5.7	-12.7	-5.0

r Revised

Chart 3. One-month percent change in the Export Price Index: January 2015 – January 2016

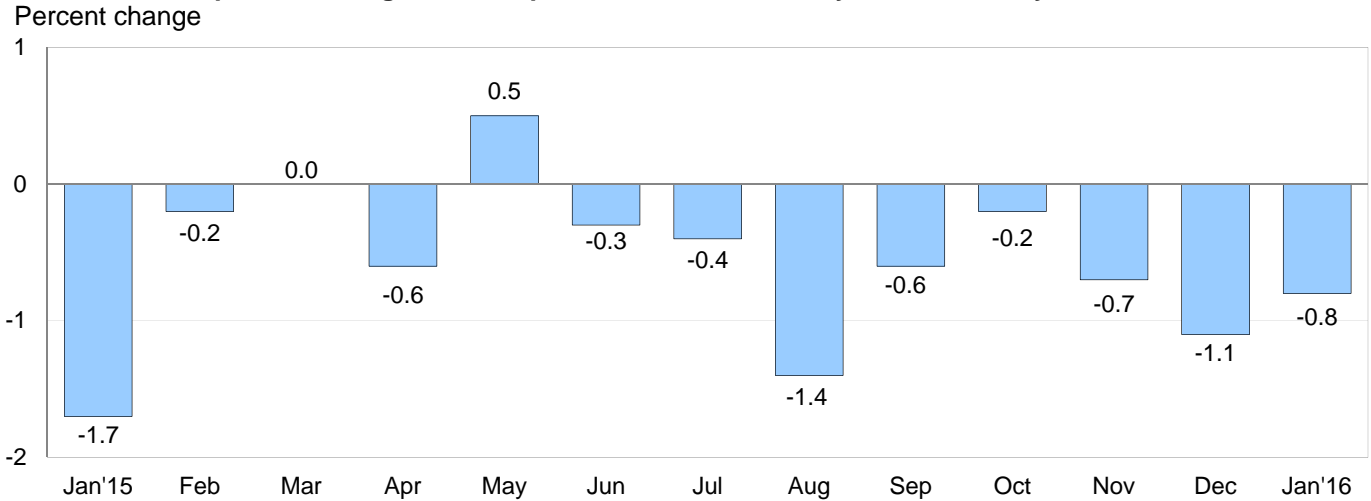
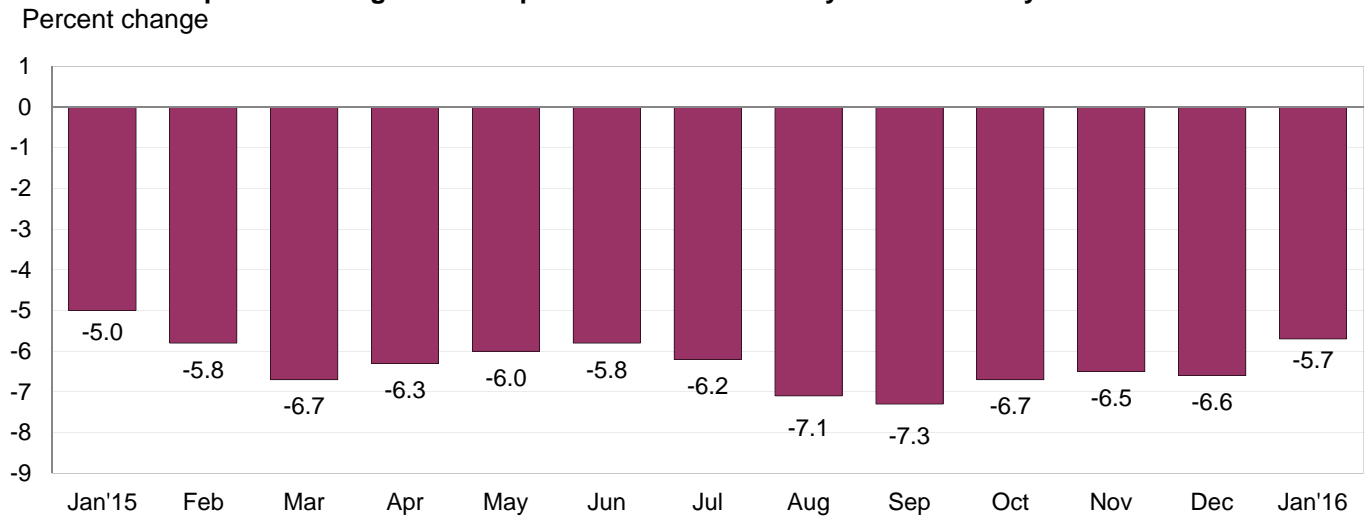


Chart 4. 12-month percent change in the Export Price Index: January 2015 – January 2016



All Exports: Prices for U.S. exports fell 0.8 percent in January and have not recorded a monthly advance since the index rose 0.5 percent in May 2015. In January, declining prices for both agricultural exports and nonagricultural exports contributed to the overall drop. The price index for overall exports fell 5.7 percent for the year ended in January.

Agricultural Exports: Agricultural export prices decreased 1.1 percent in January, after declining 1.0 percent in December and 0.9 percent in November. Lower nut prices, which fell 7.8 percent in January, were the largest contributor to the decline for all 3 months. In January, falling prices for soybeans, meat, corn, and wheat also factored into the decrease. Prices for agricultural exports fell 12.7 percent from January 2015 to January 2016.

All Exports Excluding Agriculture: The price index for nonagricultural exports declined 0.8 percent in January, after a 1.1-percent decrease in December. The January drop was driven by lower nonagricultural industrial supplies and materials prices, although lower consumer goods prices and capital goods prices also contributed to the overall drop in nonagricultural export prices. In contrast, automotive vehicle prices advanced in January. Nonagricultural export prices declined 5.0 percent for the January 2015-16 period, following a 4.9-percent decrease over the previous 12-month period.

SELECTED JANUARY HIGHLIGHTS

Import Prices

Imports by Locality of Origin: Import prices from China edged down 0.1 percent in January, following 0.2-percent decreases in each of the previous 2 months. Prices for imports from China have not increased on a monthly basis since ticking up 0.1 percent in December 2014. The price index for imports from Japan also fell 0.1 percent in January. Import prices from Japan have not recorded a monthly advance since the index rose 0.2 percent in March 2014. Prices for imports from Canada declined 2.8 percent in January, led by lower fuel prices. Falling fuel prices in January also impacted the price index for imports from the European Union and from Mexico, which declined 0.3 percent and 0.2 percent, respectively.

Nonfuel Industrial Supplies and Materials: The price index for nonfuel industrial supplies and materials fell 1.5 percent in January, after decreasing 1.1 percent the previous month. The January decline was led by a 2.2-percent drop in chemical prices and a 1.9-percent decrease in metal prices.

Finished Goods: The major import finished goods categories were mixed in January. Capital goods prices declined 0.2 percent and last recorded a monthly advance when the index increased 0.1 percent in June 2014. In contrast, prices for automotive vehicles rose 0.2 percent, and consumer goods prices ticked up 0.1 percent.

Foods, Feeds, and Beverages: Prices for foods, feeds, and beverages advanced 0.6 percent in January, the largest monthly rise for the index since a 0.7-percent increase in December 2014. The January advance was driven by a 10.9-percent increase in vegetable prices.

Transportation Services: Import air passenger fares declined 1.0 percent in January, following a 0.6-percent drop the previous month. In January, lower Asian and Latin American/Caribbean fares helped to offset an 11.0-percent increase in European fares. Overall import air passenger fares fell 4.3 percent over the past 12 months. The price index for import air freight declined 4.6 percent in January, the largest monthly drop for the index since a 4.9-percent decrease in December 2008. Import air freight prices fell 7.5 percent for the year ended in January.

Export Prices

Nonagricultural Industrial Supplies and Materials: Nonagricultural industrial supplies and materials prices declined 2.1 percent in January, after a 3.1-percent drop in December. Both decreases were led by falling fuel prices.

Finished Goods: The price indexes for consumer goods and capital goods each fell in January while prices for automotive vehicles ticked up 0.1 percent. Consumer goods prices declined 0.4 percent for the second consecutive month. Prices for export capital goods edged down 0.1 percent in January and 0.7 percent over the past year, the largest 12-month decrease since the index fell 0.7 percent in January 2004. Those were the largest over-the-year declines since capital goods prices decreased 1.0 percent in November 2003.

Transportation Services: Export air passenger fares increased 6.2 percent in January, the largest monthly advance since the index rose 8.3 percent in December 2014. In January, a 9.0-percent increase in Asian fares was the largest contributor to the advance. Despite the January rise, export air passenger fares fell 9.7 percent over the past year. The price index for export air freight rose 1.7 percent in January and declined 2.5 percent over the past 12 months.

Import and Export Price Index data for February 2016 are scheduled for release on Friday, March 11, 2016 at 8:30 a.m. (EST).

Table 1. U.S. import price indexes and percent changes for selected categories of goods: January 2015 to January 2016

[2000=100, unless otherwise noted]

Description	End Use	Relative importance Dec. 2015 ¹	Index		Percent change				
			Dec. 2015	Jan. 2016	Annual Jan. 2015 to Jan. 2016	Monthly			
						Sept. 2015 to Oct. 2015	Oct. 2015 to Nov. 2015	Nov. 2015 to Dec. 2015	Dec. 2015 to Jan. 2016
All commodities		100.000	119.5	118.2	-6.2	-0.3	-0.6	-1.1	-1.1
All imports excluding food and fuels (Dec. 2010=100)		86.312	98.3	98.1	-2.9	-0.3	-0.2	-0.3	-0.2
All imports excluding petroleum		93.077	110.9	110.7	-3.1	-0.4	-0.2	-0.4	-0.2
All imports excluding fuels (Dec. 2001=100)		92.447	115.0	114.8	-2.9	-0.3	-0.3	-0.3	-0.2
Foods, feeds, & beverages	0	6.135	172.1	173.1	-3.3	-1.0	-0.2	-0.3	0.6
Agricultural foods, feeds & beverages, excluding distilled beverages.....	00	4.777	189.7	190.3	-3.7	-1.5	0.0	-0.5	0.3
Nonagricultural foods (fish, distilled beverages).....	01	1.358	132.4	134.3	-2.0	0.4	-0.7	0.5	1.4
Industrial supplies & materials	1	20.957	149.2	141.2	-20.9	-0.7	-2.1	-4.2	-5.4
Industrial supplies & materials excluding petroleum.....		14.034	138.9	136.9	-12.0	-0.9	-0.8	-1.3	-1.4
Industrial supplies & materials excluding fuels (Dec. 2001=100).....		13.404	157.8	155.5	-10.9	-0.8	-0.7	-1.1	-1.5
Industrial supplies & materials, durable....		7.955	143.5	141.8	-12.8	-0.5	-1.0	-1.7	-1.2
Industrial supplies & materials nondurable excluding petroleum.....		5.450	132.9	130.5	-11.0	-1.5	-0.4	-0.8	-1.8
Fuels & lubricants.....	10	7.555	137.4	120.4	-34.5	-0.4	-4.1	-8.7	-12.4
Petroleum & petroleum products.....	100	6.925	146.5	126.8	-35.3	-0.2	-4.2	-9.2	-13.4
Crude.....	10000	4.810	142.6	125.9	-35.5	1.6	-6.3	-10.6	-11.7
Fuels, n.e.s.-coals & gas.....	101	0.455	89.4	85.4	-33.3	-2.6	-3.3	-5.3	-4.5
Gas-natural.....	10110	0.353	71.6	69.3	-40.1	-3.6	-4.7	-7.5	-3.2
Paper & paper base stocks.....	11	0.588	108.4	107.6	-4.0	-0.6	0.2	-0.9	-0.7
Materials associated with nondurable supplies & materials.....	12	4.929	153.4	150.3	-8.7	-1.5	-0.2	-0.3	-2.0
Selected building materials.....	13	1.285	134.1	133.9	-4.9	-0.2	1.3	-0.4	-0.1
Unfinished metals related to durable goods.....	14	3.165	177.4	174.1	-22.5	-0.6	-2.6	-3.4	-1.9
Finished metals related to durable goods.....	15	1.706	145.5	144.7	-7.0	-0.7	-0.7	-1.0	-0.5
Nonmetals related to durable goods.....	16	1.731	108.3	106.9	-4.3	-0.1	-0.3	-0.4	-1.3
Capital goods	2	29.004	89.8	89.6	-2.4	-0.2	-0.2	-0.2	-0.2
Electric generating equipment.....	20	3.511	116.6	116.8	-2.4	-0.5	-0.2	-0.3	0.2
Nonelectrical machinery.....	21	22.755	82.3	82.1	-2.6	-0.2	-0.2	-0.2	-0.2
Transportation equipment excluding motor vehicles (Dec. 2001=100).....	22	2.738	137.0	137.3	0.3	0.0	0.1	0.0	0.2
Automotive vehicles, parts & engines	3	16.266	110.4	110.6	-1.1	-0.3	-0.1	-0.2	0.2
Consumer goods, excluding automobiles	4	27.638	107.1	107.2	-0.3	0.0	0.0	-0.1	0.1
Nondurables, manufactured.....	40	13.106	119.0	119.5	0.6	0.0	-0.1	-0.1	0.4
Durables, manufactured.....	41	13.008	94.9	94.9	-1.2	0.0	-0.1	-0.4	0.0
Nonmanufactured consumer goods.....	42	1.525	120.3	119.8	0.6	1.3	0.3	1.5	-0.4

¹ Relative importance figures are based on 2014 trade values.

NOTES: Data may be revised in each of the 3 months after original publication.

Dash = Not available

Table 2. U.S. export price indexes and percent changes for selected categories of goods: January 2015 to January 2016

[2000=100, unless otherwise noted]

Description	End Use	Relative importance Dec. 2015 ¹	Index		Percent change				
			Dec. 2015	Jan. 2016	Annual	Monthly			
					Jan. 2015 to Jan. 2016	Sept. 2015 to Oct. 2015	Oct. 2015 to Nov. 2015	Nov. 2015 to Dec. 2015	Dec. 2015 to Jan. 2016
All commodities.....		100.000	119.8	118.9	-5.7	-0.2	-0.7	-1.1	-0.8
Agricultural commodities.....		9.108	175.6	173.7	-12.7	0.1	-0.9	-1.0	-1.1
All exports excluding food and fuels (Dec. 2010=100).....		85.008	98.2	98.1	-3.1	-0.3	-0.4	-0.5	-0.1
Nonagricultural commodities.....		90.893	115.6	114.7	-5.0	-0.3	-0.7	-1.1	-0.8
Foods, feeds, & beverages.....	0	8.524	177.2	174.4	-13.0	0.5	-0.8	-1.1	-1.6
Agricultural foods, feeds & beverages, excluding distilled beverages.....	00	7.854	177.4	174.5	-13.5	0.4	-0.9	-1.2	-1.6
Nonagricultural foods (fish, distilled beverages).....	01	0.670	182.0	180.2	-7.4	2.3	-0.1	0.2	-1.0
Industrial supplies & materials.....	1	28.358	137.5	134.8	-12.8	-0.8	-2.0	-2.9	-2.0
Industrial supplies & materials, durable....		10.319	147.7	147.7	-10.2	-0.1	-1.4	-1.8	0.0
Industrial supplies & materials, nondurable.....		18.038	132.8	128.8	-14.2	-1.3	-2.3	-3.6	-3.0
Agricultural industrial supplies & materials.....	10	1.254	169.9	173.9	-7.5	-1.7	-1.5	0.4	2.4
Nonagricultural industrial supplies & materials.....		27.104	136.4	133.5	-13.0	-0.8	-2.0	-3.1	-2.1
Fuels & lubricants.....	11	6.469	136.8	125.8	-26.3	-1.3	-3.6	-9.0	-8.0
Nonagricultural supplies & materials excluding fuels & building materials....	12	19.601	147.0	146.5	-8.6	-0.7	-1.6	-1.3	-0.3
Selected building materials.....	13	1.034	114.6	115.0	-5.2	0.3	0.5	0.7	0.3
Capital goods.....	2	39.194	106.9	106.8	-0.7	-0.2	-0.1	-0.2	-0.1
Electrical generating equipment.....	20	3.996	112.4	112.3	-2.3	-0.3	-0.1	-0.4	-0.1
Nonelectrical machinery.....	21	26.551	94.5	94.2	-1.5	-0.2	0.0	-0.2	-0.3
Transportation equipment excluding motor vehicles (Dec. 2001=100).....	22	8.648	161.9	162.2	1.9	-0.1	-0.1	-0.1	0.2
Automotive vehicles, parts & engines.....	3	10.827	113.5	113.6	-0.4	-0.1	-0.1	-0.1	0.1
Consumer goods, excluding automotives.....	4	13.098	111.5	111.0	-2.2	-0.1	0.0	-0.4	-0.4
Nondurables, manufactured.....	40	5.943	107.2	106.7	-3.3	0.0	0.0	-0.5	-0.5
Durables, manufactured.....	41	5.507	109.4	108.8	-1.7	-0.2	0.0	-0.5	-0.5

¹ Relative importance figures are based on 2014 trade values.

NOTES: Data may be revised in each of the 3 months after original publication.

Dash = Not available

Table 3. U.S. import price indexes and percent changes for selected categories of goods: January 2015 to January 2016

[December 2005=100, unless otherwise noted]

Description	NAICS	Relative importance Dec. 2015 ¹	Index		Percent change				
			Dec. 2015	Jan. 2016	Annual Jan. 2015 to Jan. 2016	Monthly			
						Sept. 2015 to Oct. 2015	Oct. 2015 to Nov. 2015	Nov. 2015 to Dec. 2015	Dec. 2015 to Jan. 2016
Nonmanufactured articles.....		7.523	77.1	71.2	-27.7	0.6	-4.4	-7.1	-7.7
Agriculture, forestry, fishing and hunting.....	11	2.062	176.9	179.0	0.7	-1.9	0.9	1.5	1.2
Crop production.....	111	1.684	191.7	194.3	4.2	-0.6	0.6	2.8	1.4
Animal production (Dec. 2014=100).....	112	0.200	76.2	79.1	-18.9	-11.4	4.6	-6.3	3.8
Mining.....	21	5.461	64.7	57.7	-35.2	1.5	-6.0	-9.9	-10.8
Mining (except oil and gas) (Dec. 2006=100).....	212	0.245	96.6	92.4	-20.2	-0.2	-0.3	-0.2	-4.3
Manufactured articles.....		92.200	108.9	108.3	-4.0	-0.5	-0.2	-0.5	-0.6
Manufactured goods, part 1.....	31	12.200	122.7	122.5	-2.5	-0.4	-0.2	-0.4	-0.2
Food manufacturing.....	311	3.392	147.0	146.6	-7.3	-1.1	-0.5	-1.1	-0.3
Beverage and tobacco product manufacturing.....	312	1.099	117.9	118.0	0.3	0.0	-0.2	-0.2	0.1
Textile mills (Dec. 2011=100).....	313	0.413	99.5	99.6	-3.0	-0.2	-0.5	-0.2	0.1
Textile product mills.....	314	0.920	110.8	110.1	-3.1	-0.4	-0.4	-0.1	-0.6
Apparel manufacturing.....	315	4.418	111.4	111.5	-0.4	-0.1	-0.1	-0.1	0.1
Leather and allied product manufacturing.....	316	1.959	124.4	124.0	-0.1	-0.1	0.0	-0.1	-0.3
Manufactured goods, part 2.....	32	16.993	116.1	112.9	-8.3	-1.3	0.3	-0.9	-2.8
Wood product manufacturing.....	321	0.764	110.7	110.8	-7.8	-0.5	1.8	-0.6	0.1
Paper manufacturing.....	322	1.090	105.8	105.3	-5.0	-0.5	0.0	-0.8	-0.5
Petroleum and coal products manufacturing.....	324	1.997	74.3	60.6	-35.5	-5.4	1.5	-5.8	-18.4
Chemical manufacturing.....	325	9.575	131.2	130.7	-3.4	-0.8	0.0	-0.2	-0.4
Plastics and rubber products manufacturing.....	326	2.318	118.4	116.3	-4.0	-0.1	-0.1	-0.2	-1.8
Nonmetallic mineral product manufacturing.....	327	1.048	130.2	129.7	-0.2	0.0	0.1	-0.1	-0.4
Manufactured goods, part 3.....	33	63.007	103.5	103.3	-3.1	-0.2	-0.3	-0.4	-0.2
Primary metal manufacturing.....	331	3.938	120.4	117.9	-21.2	-0.5	-2.4	-3.4	-2.1
Fabricated metal product manufacturing.....	332	3.180	123.9	123.6	-2.8	-0.7	-0.4	-0.3	-0.2
Machinery manufacturing.....	333	7.862	117.7	117.3	-2.2	-0.2	-0.2	-0.4	-0.3
Computer and electronic product manufacturing.....	334	18.393	77.3	77.1	-2.2	-0.1	-0.1	-0.1	-0.3
Electrical equipment, appliance, and component manufacturing.....	335	4.942	116.1	116.5	-1.9	-0.2	-0.2	-0.5	0.3
Transportation equipment manufacturing.....	336	17.468	109.6	109.9	-0.7	-0.3	0.0	-0.2	0.3
Furniture and related product manufacturing.....	337	1.680	115.0	115.3	-0.8	-0.2	0.1	-0.4	0.3
Miscellaneous manufacturing.....	339	5.545	118.9	119.0	-1.7	-0.1	0.0	-0.2	0.1

¹ Relative importance figures are based on 2014 trade values.

NOTES: Data may be revised in each of the 3 months after original publication.

Dash = Not available

Table 4. U.S. export price indexes and percent changes for selected categories of goods: January 2015 to January 2016

[December 2005=100, unless otherwise noted]

Description	NAICS	Relative importance Dec. 2015 ¹	Index		Percent change				
			Dec. 2015	Jan. 2016	Annual Jan. 2015 to Jan. 2016	Monthly			
						Sept. 2015 to Oct. 2015	Oct. 2015 to Nov. 2015	Nov. 2015 to Dec. 2015	Dec. 2015 to Jan. 2016
Nonmanufactured articles.....		6.842	119.9	121.6	-13.8	-1.3	-3.4	-0.4	1.4
Agriculture, forestry, fishing and hunting.....	11	4.677	154.2	153.0	-11.1	1.6	-1.6	-1.1	-0.8
Crop production.....	111	4.402	159.8	158.4	-11.3	1.7	-1.6	-1.2	-0.9
Mining.....	21	2.165	61.3	65.2	-18.8	-7.0	-7.0	0.8	6.4
Mining (except oil and gas).....	212	1.128	77.1	77.8	-16.3	-2.4	-1.5	-2.0	0.9
Manufactured articles.....		91.964	110.8	109.9	-4.7	-0.4	-0.5	-1.0	-0.8
Manufactured goods, part 1.....	31	6.744	133.6	132.2	-11.3	-1.1	-0.5	-0.5	-1.0
Food manufacturing.....	311	4.508	149.5	147.8	-13.7	-1.2	-0.6	-0.7	-1.1
Beverage and tobacco product manufacturing.....	312	0.619	107.3	104.9	-8.9	-2.0	-0.2	0.8	-2.2
Manufactured goods, part 2.....	32	23.117	104.7	102.2	-10.3	-0.6	-1.3	-2.8	-2.4
Paper manufacturing.....	322	1.762	122.2	121.8	-2.2	-0.2	-0.9	-0.3	-0.3
Printing and related support activities (Dec. 2015=100).....	323	0.270	100.0	100.0	-	-	-	-	0.0
Petroleum and coal products manufacturing.....	324	4.092	77.5	69.1	-29.8	-1.1	-3.3	-11.8	-10.8
Chemical manufacturing.....	325	13.157	115.0	114.3	-6.5	-0.8	-1.1	-0.9	-0.6
Plastics and rubber products manufacturing.....	326	2.427	116.5	116.8	-2.1	-0.3	0.0	-0.2	0.3
Nonmetallic mineral product manufacturing.....	327	0.872	112.7	111.9	-0.4	0.2	0.1	0.1	-0.7
Manufactured goods, part 3.....	33	62.103	111.0	110.8	-1.6	-0.1	-0.3	-0.4	-0.2
Primary metal manufacturing.....	331	4.060	127.3	126.5	-11.4	0.2	-2.0	-3.0	-0.6
Fabricated metal product manufacturing...	332	3.307	129.8	130.2	0.7	-0.2	0.2	-0.1	0.3
Machinery manufacturing.....	333	11.606	125.1	125.1	0.2	-0.1	0.0	-0.2	0.0
Computer and electronic product manufacturing.....	334	14.736	84.7	84.3	-3.0	-0.2	-0.2	-0.4	-0.5
Electrical equipment, appliance, and component manufacturing.....	335	3.862	112.4	112.1	-2.3	0.0	-0.4	-0.5	-0.3
Transportation equipment manufacturing..	336	18.394	121.7	121.7	0.7	0.0	-0.1	0.0	0.0
Furniture and related product manufacturing (Dec. 2011=100).....	337	0.393	110.2	110.5	0.2	0.1	0.0	0.1	0.3
Miscellaneous manufacturing.....	339	5.745	122.1	122.0	-1.2	-0.3	0.1	-0.2	-0.1

¹ Relative importance figures are based on 2014 trade values.

NOTES: Data may be revised in each of the 3 months after original publication.

Dash = Not available

Table 5. U.S. import price indexes and percent changes for selected categories of goods: January 2015 to January 2016

[2000=100, unless otherwise noted]

Description	Harmoni- zied system	Relative importance Dec. 2015 ¹	Index		Percent change				
			Dec. 2015	Jan. 2016	Annual	Monthly			
					Jan. 2015 to Jan. 2016	Sept. 2015 to Oct. 2015	Oct. 2015 to Nov. 2015	Nov. 2015 to Dec. 2015	Dec. 2015 to Jan. 2016
Live animals; animal products.....	I	1.398	177.5	180.0	-7.8	-2.9	0.6	-1.5	1.4
Meat and edible meat offal.....	02	0.363	220.7	214.3	-14.0	-6.5	1.8	-2.6	-2.9
Fish and crustaceans, molluscs and other aquatic invertebrates.....	03	0.724	129.6	133.6	-1.6	0.9	-1.3	0.9	3.1
Vegetable products.....	II	2.126	209.0	211.7	5.3	-0.4	0.1	3.1	1.3
Edible vegetables, roots, and tubers.....	07	0.578	520.0	589.0	52.9	-5.9	0.0	4.3	13.3
Edible fruit and nuts; peel of citrus fruit or melons.....	08	0.599	97.6	93.2	-8.0	3.4	0.3	2.7	-4.5
Coffee, tea, mate and spices.....	09	0.369	231.2	225.1	-15.0	-0.7	-0.9	2.0	-2.6
Oilseeds & misc grains, seeds, plants, straw & fodder (Dec. 2015=100).....	12	0.164	100.0	101.9	-	-	-	-	1.9
Animal or vegetable fats and oils (Dec. 2009=100).....	III	0.257	97.1	97.8	-11.5	0.1	-0.4	-5.3	0.7
Prepared foodstuffs, beverages, and tobacco.....	IV	2.779	159.0	158.1	-2.5	-0.4	0.0	-0.4	-0.6
Sugars and sugar confectionary (Dec. 2012=100).....	17	0.190	84.9	84.7	-7.4	-0.5	0.1	-0.6	-0.2
Cocoa and cocoa preparations (Dec. 2009=100).....	18	0.251	115.6	108.6	-3.3	-1.7	1.7	-0.3	-6.1
Preparations of cereals, flour, starch or milk; bakers' wares (Dec. 2007=100).....	19	0.287	132.0	132.0	-1.1	0.0	-0.1	-0.1	0.0
Preparations of vegetables, fruit, nuts, or other parts of plants.....	20	0.324	154.1	153.4	-7.4	-0.3	1.1	-0.1	-0.5
Beverages, spirits, and vinegar.....	22	1.038	128.0	128.0	0.1	0.0	-0.2	0.0	0.0
Mineral products.....	V	7.629	137.8	120.3	-34.9	-0.5	-4.2	-8.7	-12.7
Mineral fuels, oils and residuals, bituminous substances and mineral waxes.....	27	7.361	134.7	117.2	-35.5	-0.5	-4.3	-9.0	-13.0
Products of the chemical or allied industries.....	VI	8.950	146.9	146.9	-1.5	-0.4	0.1	0.0	0.0
Inorganic chemicals.....	28	0.602	277.9	268.9	-15.7	-1.4	-1.3	-2.1	-3.2
Organic chemicals.....	29	2.415	121.2	120.6	-3.1	-0.6	-0.1	0.1	-0.5
Pharmaceutical products.....	30	3.779	138.1	140.2	3.3	0.2	0.0	0.0	1.5
Fertilizers (Dec. 2009=100).....	31	0.344	92.4	83.0	-27.9	-8.9	0.0	0.9	-10.2
Tanning extracts; dye, pigments, varnish, paints & putty (Dec. 2011=100).....	32	0.190	97.8	96.7	-7.4	-1.5	0.0	-0.2	-1.1
Miscellaneous chemical products.....	38	0.654	98.7	100.6	10.9	3.3	3.3	2.5	1.9
Plastics and articles thereof; rubber and articles thereof.....	VII	3.560	137.7	135.6	-6.4	-0.6	-0.3	-0.4	-1.5
Plastics and articles thereof.....	39	2.293	141.9	139.1	-6.8	-0.3	-0.2	-0.2	-2.0
Rubber and articles thereof.....	40	1.267	132.0	130.7	-5.8	-1.2	-0.3	-0.8	-1.0
Raw hides, skins, leather, furskins, travel goods, etc.....	VIII	0.732	127.0	126.6	-1.2	-0.2	-0.1	0.0	-0.3
Articles of leather; travel goods, bags, etc. of various materials.....	42	0.692	130.0	129.9	-0.5	-0.2	-0.1	0.0	-0.1
Wood, wood charcoal, cork, straw, basketware and wickerwork.....	IX	0.801	135.3	135.3	-7.1	-0.4	1.8	-0.4	0.0
Wood and articles of wood; wood charcoal (Dec. 2014=100).....	44	0.775	92.8	92.8	-7.4	-0.4	1.9	-0.4	0.0
Woodpulp, recovered paper, and paper products.....	X	1.170	110.4	109.8	-2.9	-0.3	0.0	-0.5	-0.5
Paper and paperboard; articles of paper pulp, paper or paperboard.....	48	0.791	104.8	103.9	-3.0	0.1	-0.3	-0.1	-0.9

See footnotes at end of table.

Table 5. U.S. import price indexes and percent changes for selected categories of goods: January 2015 to January 2016 — Continued
 [2000=100, unless otherwise noted]

Description	Harmoni- zied system	Relative importance Dec. 2015 ¹	Index		Percent change				
			Dec. 2015	Jan. 2016	Annual	Monthly			
					Jan. 2015 to Jan. 2016	Sept. 2015 to Oct. 2015	Oct. 2015 to Nov. 2015	Nov. 2015 to Dec. 2015	Dec. 2015 to Jan. 2016
Printed matter (Dec. 2015=100).....	49	0.212	100.0	100.0	-	-	-	-	0.0
Textile and textile articles.....	XI	5.562	113.7	113.6	-1.0	-0.1	-0.1	-0.2	-0.1
Articles of apparel and clothing accessories, knitted or crocheted.....	61	2.303	104.0	103.9	0.0	0.0	0.0	0.0	-0.1
Articles of apparel and clothing accessories, not knitted or crocheted.....	62	1.916	119.4	119.6	-0.6	0.0	-0.1	-0.2	0.2
Made-up or worn textile articles.....	63	0.652	104.8	104.1	-3.1	-0.6	-0.4	-0.2	-0.7
Headgear, umbrellas, artificial flowers, etc...	XII	1.555	123.4	123.2	0.5	0.0	0.0	-0.2	-0.2
Footwear and parts of such articles.....	64	1.351	122.6	122.3	0.2	0.0	-0.1	-0.1	-0.2
Stone, plaster, cement, asbestos, ceramics, glass etc.....	XIII	0.972	131.6	131.1	-0.8	0.1	0.1	-0.4	-0.4
Articles of stone, plaster, cement, asbestos, or mica (Dec. 2015=100).....	68	0.337	100.0	99.1	-	-	-	-	-0.9
Ceramic products.....	69	0.286	138.1	138.3	-0.3	-0.1	-0.1	0.1	0.1
Glass and glassware.....	70	0.348	128.9	128.5	-0.2	0.1	0.0	-0.8	-0.3
Pearls, stones, precious metals, imitation jewelry, and coins.....	XIV	2.904	159.5	160.4	-7.6	0.8	-0.9	-2.6	0.6
Base metals and articles of base metals. ...	XV	5.468	154.7	152.0	-14.4	-1.2	-1.4	-1.2	-1.7
Iron and steel.....	72	1.249	157.5	150.5	-29.1	-3.6	-4.0	-1.7	-4.4
Articles of iron or steel.....	73	1.782	142.0	140.3	-8.0	-1.0	-0.8	-0.9	-1.2
Copper and articles thereof.....	74	0.381	253.7	248.3	-17.3	1.5	-0.9	-1.5	-2.1
Aluminum and articles thereof.....	76	0.734	121.4	120.6	-12.7	-0.9	-1.5	-0.7	-0.7
Tools, implements, cutlery, spoons and forks, of base metal; parts thereof.....	82	0.462	125.9	126.4	-1.9	-0.4	-0.7	-0.2	0.4
Miscellaneous articles of base metal.....	83	0.536	137.6	137.3	-0.4	-0.2	0.4	-0.2	-0.2
Machinery, electrical equipment, TV image and sound recorders, parts, etc.....	XVI	31.227	81.6	81.6	-2.0	-0.2	-0.1	-0.4	0.0
Machinery and mechanical appliances; parts thereof.....	84	15.854	86.6	86.6	-2.3	-0.3	-0.1	-0.5	0.0
Electrical machinery and equip, sound and TV recorders & reproducers, parts.....	85	15.373	76.8	76.8	-1.9	-0.1	-0.1	-0.3	0.0
Vehicles, aircraft, vessels and associated transport equipment.....	XVII	14.534	114.1	114.3	-0.5	-0.2	-0.1	-0.2	0.2
Motor vehicles and their parts.....	87	13.019	112.7	112.8	-0.6	-0.2	-0.1	-0.2	0.1
Aircraft, spacecraft, and parts thereof (Dec. 2002=100).....	88	1.443	119.8	120.3	0.1	0.0	0.0	0.1	0.4
Optical, photo, measuring, medical & musical instruments; & timepieces.....	XVIII	4.045	102.9	102.4	-1.6	-0.2	0.0	-0.2	-0.5
Optical, photographic, measuring and medical instruments.....	90	3.714	99.8	99.3	-1.6	-0.1	0.0	-0.2	-0.5
Clocks and watches and parts thereof.....	91	0.266	140.0	139.9	-1.7	-0.6	0.3	-0.7	-0.1
Miscellaneous manufactured articles.....	XX	4.244	112.1	112.2	-1.5	-0.1	-0.1	-0.2	0.1
Furniture & stuffed furnishings; lamps & lighting fittings, nesoi; prefab bldgs.....	94	2.595	116.6	116.8	-1.7	-0.1	-0.1	-0.3	0.2
Toys, games and sports equipment; parts and accessories thereof.....	95	1.369	103.8	103.7	-1.2	-0.2	-0.1	0.0	-0.1
Miscellaneous manufactured articles.....	96	0.280	134.0	135.8	0.1	-0.1	0.0	0.0	1.3

¹ Relative importance figures are based on 2014 trade values.

NOTES: Data may be revised in each of the 3 months after original publication.

Dash = Not available

Table 6. U.S. export price indexes and percent changes for selected categories of goods: January 2015 to January 2016

[2000=100, unless otherwise noted]

Description	Harmoni- zied system	Relative importance Dec. 2015 ¹	Index		Percent change				
			Dec. 2015	Jan. 2016	Annual	Monthly			
					Jan. 2015 to Jan. 2016	Sept. 2015 to Oct. 2015	Oct. 2015 to Nov. 2015	Nov. 2015 to Dec. 2015	Dec. 2015 to Jan. 2016
Live animals; animal products.....	I	1.700	181.7	178.5	-19.2	-1.9	0.1	-1.4	-1.8
Meat & edible meat offal (Dec. 2006=100)...	02	0.975	139.0	135.4	-23.8	-2.9	-0.4	-1.4	-2.6
Vegetable products.....	II	4.393	196.4	194.0	-13.0	2.0	-0.8	-1.8	-1.2
Edible fruit and nuts; peel of citrus fruit or melons.....	08	1.026	170.1	170.4	-7.6	2.3	0.3	-2.9	0.2
Cereals.....	10	1.307	185.4	178.9	-18.6	7.9	-1.3	-4.1	-3.5
Oilseeds and misc. grains, seeds, fruits, plants, straw and fodder.....	12	1.529	188.8	185.8	-17.4	0.1	-2.9	0.4	-1.6
Prepared foodstuffs, beverages, and tobacco.....	IV	2.977	148.3	146.6	-9.3	-0.9	-0.4	-0.5	-1.1
Preparations of vegetables, fruit, nuts or other parts of plants (Dec. 2009=100)....	20	0.404	119.6	120.3	1.5	0.3	0.2	0.7	0.6
Beverages, spirits, and vinegar (Dec. 2008=100).....	22	0.557	106.1	104.5	-5.2	0.0	-0.7	-1.3	-1.5
Residues and waste from the food industries; prepared animal feed.....	23	0.698	198.9	194.2	-19.4	-3.6	-1.3	-0.7	-2.4
Mineral products.....	V	6.329	154.5	145.1	-26.7	-2.3	-4.0	-9.0	-6.1
Ores, slag and ash (Dec. 2012=100).....	26	0.448	70.2	72.3	-19.5	-3.8	-1.9	-2.6	3.0
Mineral fuels, oils and residuals, bituminous substances and mineral waxes.....	27	5.683	147.3	137.0	-27.9	-2.2	-4.2	-9.7	-7.0
Products of the chemical or allied industries.....	VI	11.029	138.5	137.5	-5.0	-0.4	-0.5	-0.6	-0.7
Inorganic chemicals.....	28	0.971	183.8	184.1	3.7	-0.4	-0.1	0.3	0.2
Organic chemicals.....	29	2.523	135.2	132.1	-11.3	-1.1	-0.9	-0.6	-2.3
Pharmaceutical products.....	30	2.998	109.2	108.8	-4.1	-0.2	0.2	-1.1	-0.4
Tanning or dyeing extracts, dyes, paints varnish, putty, & inks (Dec. 2015=100)....	32	0.556	100.0	99.3	-	-	-	-	-0.7
Essential oils and resinoids; perfumery cosmetic or toilet preparations.....	33	0.844	135.5	134.0	-1.7	-0.1	0.1	0.0	-1.1
Soap; lubricants; waxes, polishing or scouring products; candles, pastes.....	34	0.502	112.3	116.0	-0.9	-0.5	0.3	-0.4	3.3
Miscellaneous chemical products.....	38	1.884	148.4	147.6	-3.0	-0.3	-0.7	-1.1	-0.5
Plastics and articles thereof; rubber and articles thereof.....	VII	5.135	136.5	136.1	-7.0	-1.3	-1.4	-0.4	-0.3
Plastics and articles thereof.....	39	4.150	132.1	131.5	-7.2	-1.5	-1.6	-0.4	-0.5
Rubber and articles thereof.....	40	0.985	155.2	156.0	-6.1	-0.5	-0.6	-0.6	0.5
Raw hides, skins, leather, furskins, travel goods, etc.....	VIII	0.334	120.6	118.6	-21.0	-2.9	-3.4	0.0	-1.7
Raw hides and skins other than furskins and leather (Dec.2014=100).....	41	0.181	68.9	66.5	-31.7	-4.8	-5.2	-0.4	-3.5
Wood, wood charcoal, cork, straw, baskets and wickerwork (Dec. 2014=100).....	IX	0.662	96.4	96.7	-3.5	0.6	1.1	0.9	0.3
Woodpulp, recovered paper, and paper products.....	X	2.149	121.9	120.9	-3.2	0.0	-0.7	-0.6	-0.8
Woodpulp and recovered paper.....	47	0.607	121.3	119.6	-6.0	-0.3	-2.8	-1.3	-1.4
Paper and paperboard; articles of paper pulp, paper or paperboard.....	48	1.159	121.6	120.6	-2.7	0.0	0.2	-0.8	-0.8
Printed material (Dec. 2014=100).....	49	0.384	100.4	100.4	0.1	0.6	0.1	1.2	0.0
Textile and textile articles.....	XI	1.737	120.6	120.1	-3.3	-0.7	-0.7	0.4	-0.4
Cotton, including yarns and woven fabrics thereof.....	52	0.392	116.1	114.2	-6.4	-1.3	-1.2	0.0	-1.6

See footnotes at end of table.

Table 6. U.S. export price indexes and percent changes for selected categories of goods: January 2015 to January 2016 — Continued
 [2000=100, unless otherwise noted]

Description	Harmoni- zied system	Relative importance Dec. 2015 ¹	Index		Percent change				
			Dec. 2015	Jan. 2016	Annual	Monthly			
					Jan. 2015 to Jan. 2016	Sept. 2015 to Oct. 2015	Oct. 2015 to Nov. 2015	Nov. 2015 to Dec. 2015	Dec. 2015 to Jan. 2016
Stone, plaster, cement, asbestos, ceramics, glass etc.....	XIII	0.874	122.6	122.9	0.4	0.1	0.2	0.1	0.2
Articles of stone, plaster, cement, asbestos, or mica (Dec. 2015=100).....	68	0.294	100.0	100.5	—	—	—	—	0.5
Glass and glassware.....	70	0.441	99.3	99.4	0.0	0.1	0.1	0.1	0.1
Pearls, stones, precious metals, imitation jewelry, and coins.....	XIV	4.174	218.2	219.7	-7.0	0.4	-1.4	-2.5	0.7
Base metals and articles of base metals. ...	XV	4.954	141.8	141.5	-10.3	-0.6	-1.6	-1.3	-0.2
Iron and steel.....	72	0.986	137.5	136.6	-23.4	-1.9	-4.1	-2.8	-0.7
Copper and articles thereof.....	74	0.426	151.1	144.8	-24.9	-0.3	-3.4	-6.3	-4.2
Aluminum and articles thereof.....	76	0.779	103.6	103.4	-14.3	-0.7	-2.7	0.0	-0.2
Tools, implements, cutlery, spoons and forks, of base metal (Dec. 2015=100).	82	0.398	100.0	100.2	—	—	—	—	0.2
Miscellaneous articles of base metal.....	83	0.361	148.3	148.2	0.3	0.0	0.0	-0.2	-0.1
Machinery, electrical equipment, TV image and sound recorders, parts, etc.....	XVI	30.143	96.2	95.9	-1.6	-0.2	-0.1	-0.2	-0.3
Machinery and mechanical appliances; parts thereof.....	84	17.967	112.9	112.4	-1.1	0.0	-0.1	-0.2	-0.4
Electrical machinery and equipment and parts and accessories thereof.....	85	12.176	78.2	78.0	-2.5	-0.3	-0.1	-0.3	-0.3
Vehicles, aircraft, vessels and associated transport equipment.....	XVII	15.217	130.9	131.0	0.5	-0.1	-0.1	-0.1	0.1
Motor vehicles and their parts.....	87	9.301	114.8	114.8	-0.3	0.0	-0.1	-0.1	0.0
Optical, photo, measuring, medical & musical instruments; & timepieces.....	XVIII	6.303	107.1	107.4	-0.1	-0.1	0.1	-0.2	0.3
Miscellaneous manufactured articles.....	XX	1.554	111.1	111.1	0.2	0.5	-0.6	0.2	0.0
Furniture; stuffed furnishings; lamps and lighting fittings nesoi;.....	94	0.916	124.2	124.4	1.4	0.6	-0.6	0.2	0.2
Toys, games and sports equipment; parts and accessories thereof.....	95	0.480	90.1	90.1	0.4	0.3	0.0	0.3	0.0

¹ Relative importance figures are based on 2014 trade values.

NOTES: Data may be revised in each of the 3 months after original publication.

Dash = Not available

Table 7. U.S. import price indexes and percent changes by locality of origin: January 2015 to January 2016
 [2000=100, unless otherwise noted]

Description	Relative importance Dec. 2015 ¹	Index		Percent change				
		Dec. 2015	Jan. 2016	Annual	Monthly			
				Jan. 2015 to Jan. 2016	Sept. 2015 to Oct. 2015	Oct. 2015 to Nov. 2015	Nov. 2015 to Dec. 2015	Dec. 2015 to Jan. 2016
Industrialized Countries²	100.000	115.5	114.0	-6.4	0.2	-0.4	-1.0	-1.3
Nonmanufactured articles.....	6.745	107.8	99.2	-27.9	6.3	-3.7	-8.6	-8.0
Manufactured articles.....	92.887	115.7	114.8	-4.3	-0.3	-0.1	-0.5	-0.8
Other Countries³	100.000	117.5	116.4	-6.2	-0.4	-0.7	-1.1	-0.9
Nonmanufactured articles.....	8.019	159.7	148.8	-26.3	-0.7	-5.0	-6.3	-6.8
Manufactured articles.....	91.755	103.2	102.7	-3.8	-0.4	-0.2	-0.5	-0.5
Canada	100.000	114.4	111.2	-12.6	0.4	-0.8	-2.6	-2.8
Nonmanufactured articles.....	19.722	102.4	93.9	-28.4	6.7	-3.8	-9.0	-8.3
Manufactured articles.....	79.634	121.8	120.1	-7.8	-1.0	0.1	-1.1	-1.4
European Union⁴	100.000	132.1	131.7	-2.4	0.3	-0.4	-0.3	-0.3
Manufactured articles.....	99.515	128.7	128.3	-2.4	0.3	-0.4	-0.3	-0.3
France (Dec. 2003=100)	100.000	121.1	122.2	-0.7	-0.2	-0.2	-0.2	0.9
Germany (Dec. 2003=100)	100.000	116.2	114.8	-2.8	0.1	-0.1	-0.5	-1.2
United Kingdom (Dec. 2003=100)	100.000	120.0	120.1	0.1	-0.1	-0.2	-0.7	0.1
Latin America⁵	100.000	137.7	136.0	-7.8	-0.7	-1.2	-1.6	-1.2
Nonmanufactured articles.....	15.153	177.9	170.1	-18.9	1.0	-5.3	-6.7	-4.4
Manufactured articles.....	84.417	119.9	119.1	-5.5	-1.1	-0.3	-0.7	-0.7
Mexico (Dec. 2003=100)	100.000	126.1	125.8	-3.9	-0.5	-0.4	-0.6	-0.2
Nonmanufactured articles (Dec. 2008=100).....	7.774	98.3	96.6	-17.4	0.6	-4.9	-5.3	-1.7
Manufactured articles (Dec. 2008=100)...	91.788	89.4	89.4	-2.5	-0.7	0.1	-0.3	0.0
Pacific Rim (Dec. 2003=100)⁶	100.000	99.3	99.0	-2.4	-0.2	-0.1	-0.2	-0.3
China (Dec. 2003=100)	100.000	101.9	101.8	-1.6	-0.1	-0.2	-0.2	-0.1
Japan	100.000	95.1	95.0	-2.4	0.0	0.0	-0.1	-0.1
Asian NICs⁷	100.000	85.1	84.7	-3.3	-0.1	-0.6	-0.4	-0.5
ASEAN (Dec. 2003=100)⁸	100.000	97.8	97.1	-3.3	-0.1	-0.1	-0.3	-0.7
Asia Near East (Dec. 2003=100)⁹	100.000	137.4	127.6	-28.6	-2.6	-2.7	-4.5	-7.1

¹ Relative importance figures are based on 2014 trade values.

² Western Europe, Canada, Japan, Australia, New Zealand and South Africa.

³ Eastern Europe, Latin America, OPEC countries, and other countries in Asia, Africa and the Western Hemisphere.

⁴ European Union countries.

⁵ Mexico, Central America, South America and the Caribbean.

⁶ China, Japan, Australia, Brunei, Indonesia, Macao, Malaysia, New Zealand, Papua New Guinea, Philippines and the Asian Newly Industrialized Countries.

⁷ Asian Newly Industrialized Countries - Hong Kong, Singapore, South Korea and Taiwan.

⁸ Association of Southeast Asian Nations - Brunei, Cambodia, Indonesia, Laos, Malaysia, Myanmar, Philippines, Singapore, Thailand and Vietnam.

⁹ Bahrain, Iran, Iraq, Israel, Jordan, Kuwait, Lebanon, Oman, Qatar, Saudi Arabia, Syria, United Arab Emirates and Yemen.

NOTES: Data may be revised in each of the 3 months after original publication.

Regions are not mutually exclusive.

Dash = Not available

Table 8. U.S. international price indexes and percent changes for selected transportation services: January 2015 to January 2016

[2000=100, unless otherwise noted]

Description	Relative importance Dec. 2015 ¹	Index		Percent change				
		Dec. 2015	Jan. 2016	Annual Jan. 2015 to Jan. 2016	Monthly			
					Sept. 2015 to Oct. 2015	Oct. 2015 to Nov. 2015	Nov. 2015 to Dec. 2015	Dec. 2015 to Jan. 2016
Air Freight								
Import Air Freight	100.000	162.0	154.6	-7.5	5.0	0.4	-2.8	-4.6
Europe (Dec. 2003=100).....	22.736	140.4	141.0	-12.5	-0.4	-1.2	-3.4	0.4
Asia.....	64.313	148.2	137.3	-6.9	8.0	1.7	-3.1	-7.4
Export Air Freight	100.000	156.5	159.1	-2.5	-0.3	0.4	-0.1	1.7
Europe (Dec. 2006=100).....	38.229	149.8	151.7	-1.7	-0.5	0.3	0.3	1.3
Inbound Air Freight	100.000	152.5	148.8	-7.2	2.6	0.3	-1.9	-2.4
Europe (Dec. 2003=100).....	27.106	135.0	135.4	-8.4	-0.6	0.0	-2.0	0.3
Asia.....	58.896	138.8	132.8	-8.6	4.6	1.1	-2.2	-4.3
Outbound Air Freight	100.000	144.3	144.0	-4.8	-1.8	-0.7	-0.3	-0.2
Europe (Dec. 2003=100).....	34.677	157.8	158.0	-7.4	-0.5	-0.9	0.5	0.1
Asia.....	42.623	134.2	133.1	-6.4	-3.6	-1.4	-1.0	-0.8
Air Passenger Fares								
Import Air Passenger Fares	100.000	194.4	192.4	-4.3	5.2	3.7	-0.6	-1.0
Europe.....	40.445	205.6	228.3	-3.0	3.8	5.1	-11.6	11.0
Asia.....	25.945	159.9	143.8	-2.5	5.1	-0.7	13.2	-10.1
Latin America/Caribbean.....	9.750	170.5	142.5	-13.8	0.1	0.2	14.2	-16.4
Export Air Passenger Fares	100.000	160.9	170.8	-9.7	-1.4	-0.4	4.5	6.2
Europe.....	28.964	199.3	197.9	-7.3	-3.4	2.6	-5.9	-0.7
Asia.....	28.149	139.4	152.0	-9.1	0.4	-1.0	5.0	9.0
Latin America/Caribbean.....	22.629	162.9	176.7	-10.9	2.4	1.4	5.4	8.5

¹ Relative importance figures are based on 2014 trade values.

NOTES: Data may be revised in each of the 3 months after original publication.

Dash = Not available

TECHNICAL NOTE

Import and Export Merchandise and Services Price Indexes - All indexes use a modified Laspeyres formula and are not seasonally adjusted. Price indexes are reweighted annually, with a 2-year lag in the weights. Published series use a base year of 2000=100 where possible. More detailed index series and additional information may be obtained at www.bls.gov/mxp or by calling (202) 691-7101.

Merchandise Goods Classification Systems - The merchandise price indexes are published using three classification systems. Items are classified by end use according to the Bureau of Economic Analysis Classification System, by industry according to the North American Industry Classification System (NAICS), and by product category according to the Harmonized System (HS). While classification by end use and product category are self-explanatory, some notes are in order for classifying items by industry. In the NAICS imports and exports tables, items are classified by output industry, not input industry. As an example, NAICS import index 326 (plastics and rubber products manufacturing) include outputs such as manufactured plastic rather than inputs such as petroleum. The NAICS classification structure also matches the classification system used by the Producer Price Index (PPI) to produce the NAICS primary products indexes.

Import Price Indexes - Products have been classified by the Harmonized Tariff Schedule of the United States Annotated (TSUSA). Import prices are based on U.S. dollar prices paid by the U.S. importer. The prices are generally either "free on board" (f.o.b.) foreign port or "cost, insurance, and freight" (c.i.f.) U.S. port transaction prices, depending on the practices of the individual industry. The index for crude petroleum is calculated from data collected by the U.S. Department of Energy.

Export Price Indexes - Products have been classified by the Harmonized Schedule B classification system of the U.S. Bureau of the Census. The prices used are generally either "free alongside ship" (f.a.s.) factory or "free on board" (f.o.b.) transaction prices, depending on the practices of the individual industry. Prices used in the grain index, excluding rice, are obtained from the U.S. Department of Agriculture.

Services Price Indexes - Starting in September 2008, the import air passenger fares indexes represent changes in the average revenue per passenger received by foreign carriers from U.S. residents and are calculated from data obtained from an airline consulting service. These data include tickets sold by travel agencies and travel websites. Tickets sold directly by the airlines are excluded, as are frequent flyer tickets generally. Starting in January 2008, the export air passenger fares indexes represent changes in the average revenue per passenger received by U.S. carriers from foreign residents and are calculated from data collected directly from airlines. These data include frequent flyer tickets and those sold by consolidators. Taxes and fees are included in the import air passenger fares indexes and excluded from the export air passenger fares indexes. The air freight indexes are calculated from data collected directly from airlines. These data exclude mail and passenger baggage. The scope of the service being priced is the movement of freight from airport to airport only, and does not include any ground transportation or port service. The air freight indexes are presented using two definitions: balance of payments (which represent transactions between U.S. and foreign residents) and international (which represent transactions inbound to and outbound from the U.S.). Fact sheets specifying detailed information for each services industry are available at www.bls.gov/mxp under "MXP Publications."

Import Indexes by Locality of Origin - Prices used in these indexes are a subset of the data collected for the import price indexes. Beginning with January 2002, the indexes are defined by locality of origin using a nomenclature based upon the North American Industry Classification System (NAICS). Nonmanufactured goods are defined as NAICS 11 and 21, and manufactured goods are defined as NAICS 31-33.

Revision Policy - To reflect the availability of late reports and corrections by respondents, monthly data may be revised in each of the 3 months after original publication. After 3 months, no further data revisions take place. For example, data first published in the January release will be subject to revision in the releases for February, March, and April.

Uses of the Data - The primary use of the indexes is to deflate trade statistics, notably the foreign trade sector of the National Income and Product Accounts (NIPA) constructed by the Department of Commerce. Other published indexes are useful for general market analysis. For trade in international services, balance of payments indexes are used for deflating NIPA, while international indexes are more appropriate for market analysis. Merchandise and services indexes also can be used to study U.S. competitiveness and to compute price elasticities, and the merchandise import indexes by country or region of origin are useful in terms of trade analysis.

Email Subscription - The U.S. import and export price indexes news release is available through an email subscription service at www.bls.gov/bls/list.htm.

Additional Information - More detailed data are available on the Import/Export Price Indexes home page at www.bls.gov/mxp. For import and export price indexes data requests, send an email to mxpinfo@bls.gov.

Information from this release will be made available to sensory impaired individuals upon request. Voice phone: (202)-691-5200; Federal Relay Service: 1-(800)-877-8339.