



Transmission of material in this release is embargoed until
8:30 a.m. (ET) Friday, May 12, 2023

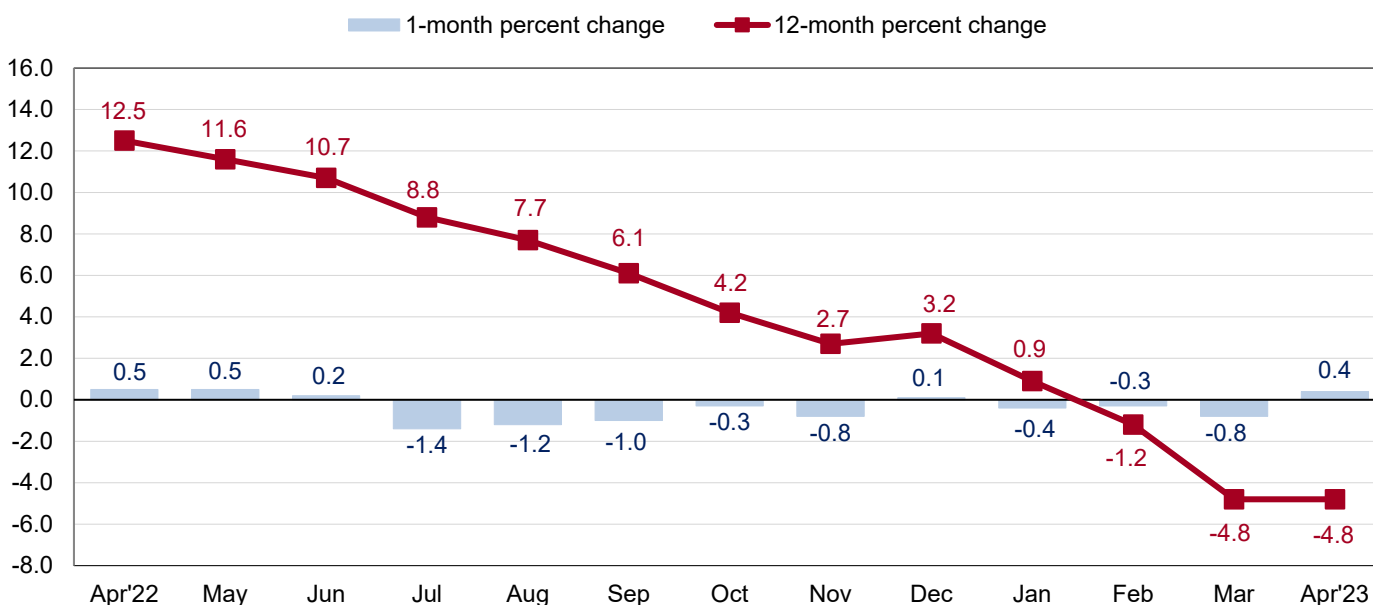
USDL-23-0945

Technical information: (202) 691-7101 • MXPinfo@bls.gov • www.bls.gov/mxp
Media contact: (202) 691-5902 • PressOffice@bls.gov

U.S. IMPORT AND EXPORT PRICE INDEXES – APRIL 2023

Prices for U.S. imports increased 0.4 percent in April following a 0.8-percent decline in March, the U.S. Bureau of Labor Statistics reported today. Higher fuel prices drove the advance in April. The price index for U.S. exports rose 0.2 percent in April, after declining 0.6 percent the previous month.

Chart 1. One-month and 12-month percent changes in the Import Price Index: April 2022 – April 2023



Imports

U.S. import prices advanced 0.4 percent in April, the first monthly increase since December 2022. Despite the April rise, the price index for U.S. imports declined over the past year, falling 4.8 percent on a 12-month basis for the second consecutive month. Those were the largest over-the-year drops since the index decreased 6.3 percent in May 2020. (See table 1.)

Fuel Imports: Prices for import fuel rose 4.5 percent in April following a 3.9-percent drop in March and a 5.6-percent decline in February. The April advance was the first monthly increase since June 2022. Despite the monthly rise, import fuel prices fell 25.9 percent over the past year. Higher petroleum prices drove the increase for the month, more than offsetting lower prices for natural gas. Prices for import petroleum advanced 5.7 percent in April, after decreasing 2.5 percent in March and edging down 0.1 percent in February. Import petroleum prices declined 25.7 percent from April 2022 to April 2023. The price index for import natural gas fell 17.4 percent in April following drops of 28.8 percent in March and 49.9 percent in February. Natural gas prices decreased 45.7 percent over the past year, the largest 12-month decline since April 2015.

All Imports Excluding Fuel: Nonfuel import prices were unchanged in April, after decreasing 0.5 percent the previous month. Higher prices in April for consumer goods and foods, feeds, and beverages offset price decreases for nonfuel industrial supplies and materials and capital goods; automotive vehicles prices were unchanged for the month. The price index for nonfuel imports fell 1.9 percent over the past 12 months, the largest over-the-year drop since April 2016.

Foods, Feeds, and Beverages: Foods, feeds, and beverages prices advanced 0.2 percent in April following a 0.9-percent decline in March. Higher prices for fruit and meat in April more than offset lower prices for vegetables.

Nonfuel Industrial Supplies and Materials: The price index for nonfuel industrial supplies and materials decreased 0.2 percent in April, after declining 1.5 percent in March. Lower unfinished building materials prices drove the decrease for the month.

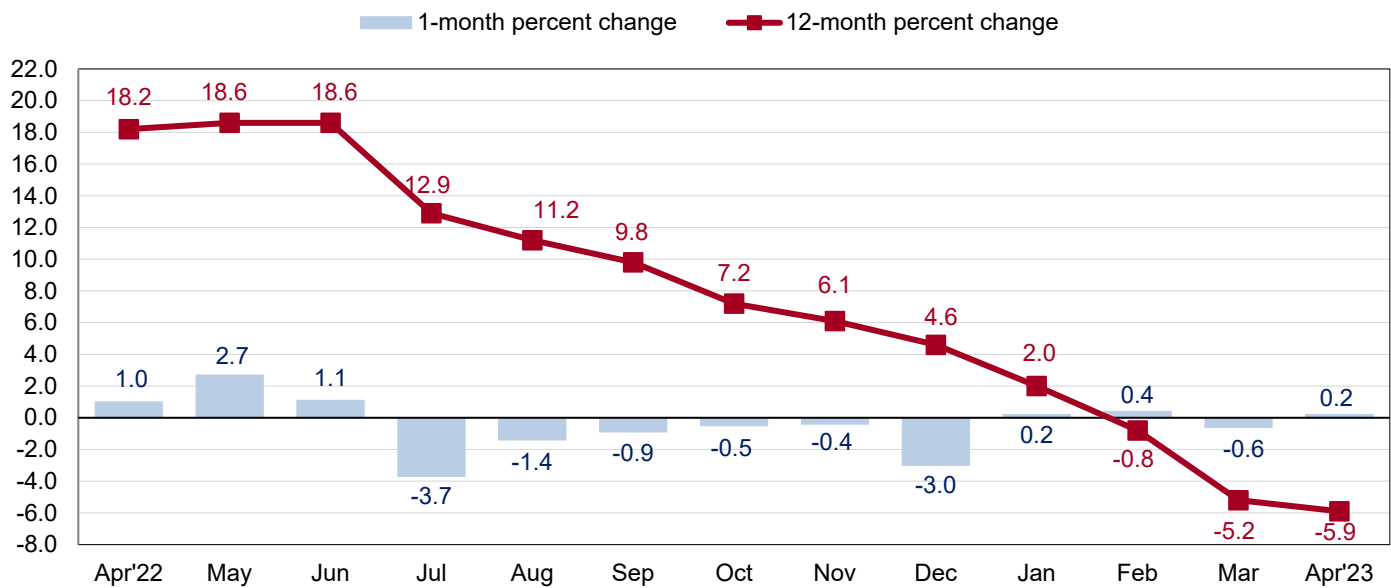
Finished Goods: Import prices for the major finished goods categories were mixed in April. The price index for consumer goods rose 0.2 percent, led by a 0.4-percent increase in prices for medicinal, dental, and pharmaceutical imports. Despite the monthly advance, consumer goods prices fell 0.2 percent from April 2022 to April 2023. The price index for capital goods edged down 0.1 percent for the second consecutive month in April. Automotive vehicles prices were unchanged in April and rose 1.9 percent over the past year.

Table A. Percent change in Import and Export Price Indexes, selected categories

Month	IMPORTS			EXPORTS		
	All imports	Fuel imports	Nonfuel imports	All exports	Agricultural exports	Non-agricultural exports
2022						
April.....	0.5	0.8	0.4	1.0	1.2	1.1
May.....	0.5	6.1	-0.3	2.7	2.4	2.7
June.....	0.2	5.6	-0.6	1.1	0.0	1.2
July.....	-1.4	-6.9	-0.5	-3.7	-3.2	-3.8
August.....	-1.2	-8.6	-0.2	-1.4	-0.5	-1.4
September.....	-1.0	-6.3	-0.3	-0.9	-0.8	-0.9
October.....	-0.3	-2.2	-0.1	-0.5	-0.6	-0.5
November.....	-0.8	-3.9	-0.3	-0.4	2.8	-0.9
December.....	0.1	-2.3	0.4	-3.0	-2.4	-3.1
2023						
January.....	-0.4	-4.8 ^r	0.2	0.2 ^r	-0.8	0.3 ^r
February.....	-0.3 ^r	-5.6 ^r	0.3 ^r	0.4	0.8 ^r	0.3
March.....	-0.8 ^r	-3.9 ^r	-0.5	-0.6 ^r	-1.9 ^r	-0.5 ^r
April.....	0.4	4.5	0.0	0.2	0.4	0.2
Apr. 2021 to 2022.....	12.5	70.6	7.2	18.2	21.2	17.8
Apr. 2022 to 2023.....	-4.8	-25.9	-1.9	-5.9	-3.9	-6.3

r Revised

Chart 2. One-month and 12-month percent changes in the Export Price Index: April 2022 – April 2023



Exports

U.S. export prices increased 0.2 percent in April, after declining 0.6 percent the previous month. Higher prices for nonagricultural exports and agricultural exports in April each contributed to the overall advance. The price index for U.S. exports fell 5.9 percent from April 2022 to April 2023, the largest over-the-year drop since a 6.7-percent decline in May 2020. (See table 2.)

Agricultural Exports: Agricultural export prices rose 0.4 percent in April following a 1.9-percent decrease in March. Higher prices for corn, nuts, meat, and vegetables in April more than offset lower fruit and soybeans prices. Despite the monthly rise, prices for agricultural exports fell 3.9 percent over the past year, the largest 12-month drop since the index fell 4.5 percent for the year ended June 2020. The over-the-year decrease in April was primarily driven by lower prices for soybeans, corn, meat, and wheat.

All Exports Excluding Agriculture: Prices for nonagricultural exports advanced 0.2 percent in April, after a 0.5-percent decrease the previous month. Higher prices in April for nonagricultural industrial supplies and materials, capital goods, and consumer goods more than offset lower prices for automotive vehicles. Nonagricultural export prices declined 6.3 percent from April 2022 to April 2023, the largest 12-month decrease since the index fell 7.0 percent in May 2020.

Nonagricultural Industrial Supplies and Materials: Nonagricultural industrial supplies and materials prices increased 0.2 percent in April following a 1.4-percent drop in March. The April advance was driven by higher petroleum and nonmonetary gold prices.

Finished Goods: Prices for the major finished goods export categories were mostly up in April. Consumer goods prices rose 0.3 percent following increases of 0.2 percent in March and 0.7 percent in February. The price index for capital goods advanced 0.2 percent in April, after rising 0.2 percent in March, 0.6 percent in February, and 0.7 percent in January. The increase in April was led by rising prices for nonelectrical machinery. Prices for automotive vehicles decreased 0.3 percent in April following a 0.1-percent increase in March and a 0.1-percent decline in February.

More information for the major import and export price indexes can be found at www.bls.gov/web/ximpim/largest.htm.

Measures of Import and Export Prices by Locality

Imports by Locality of Origin: The price index for imports from China decreased 0.3 percent in April, after declines of 0.5 percent in March, 0.1 percent in February, and 0.5 percent in January. The April drop was led by lower prices for computer and peripheral equipment manufacturing. Import prices from China fell 1.9 percent over the past year. By contrast, prices for imports from Japan increased 0.4 percent in April, the largest monthly advance since the index rose 0.9 percent in October 2022. The price index for imports from Japan increased 0.8 percent from April 2022 to April 2023. Import prices from Canada advanced 0.2 percent in April, after declining 4.9 percent over the previous 3 months. Despite the April increase, prices for imports from Canada fell 18.2 percent over the past year, the largest 12-month drop since May 2020. The price indexes for imports from Mexico and the European Union each rose in April, advancing 0.7 percent and 0.5 percent, respectively. (See table 7.)

Exports by Locality of Destination: Prices for exports to China increased 0.7 percent in April following a 0.8-percent decline the previous month. The price index for exports to China fell 8.0 percent over the past year. Export prices to Japan advanced 0.9 percent in April, after decreasing 1.3 percent in March. Despite the April rise, prices for exports to Japan declined 7.8 percent over the past 12 months. Export prices to Canada increased 0.6 percent in April following a 0.9-percent drop the previous month. The price index for exports to Mexico declined 0.4 percent in April. In contrast, prices for exports to the European Union advanced 1.2 percent in April. (See table 8.)

Terms of Trade Indexes: Terms of trade indexes are based on country, region, or grouping and measure the change in the purchasing power of exports relative to imports. The index for U.S. terms of trade with China increased 1.0 percent in April, after falling 0.4 percent in March. Lower import prices from China and higher export prices to China each contributed to the rise in U.S. terms of trade with China in April. Despite the monthly rise, U.S. terms of trade with China fell 6.2 percent over the past year. The index for U.S. terms of trade with Japan increased 0.5 percent in April following a 1.0-percent decline the previous month. U.S. terms of trade with Japan decreased 8.5 percent from April 2022 to April 2023. U.S. terms of trade with Mexico fell 1.0 percent in April and decreased 8.5 percent over the past year. In contrast, the indexes for U.S. terms of trade with the European Union and Canada advanced in April, increasing 0.7 percent and 0.4 percent, respectively. (See table 9.)

Import and Export Services

Imports: Import air passenger fares declined 5.4 percent in April following a 1.9-percent increase in March. Lower Latin American/Caribbean and European fares in April more than offset higher Asian fares. The index for import air passenger fares advanced 1.5 percent over the past 12 months. Import air freight prices rose 3.1 percent in April, after decreases of 2.7 percent in March and 4.7 percent in February. Higher Asian air freight prices drove the advance, more than offsetting lower prices for European air freight. Prices for import air freight decreased 31.5 percent over the past year. (See table 10.)

Exports: Export air passenger fares advanced 0.6 percent in April, after increasing 6.4 percent in March and decreasing 13.7 percent in February. Higher Latin American/Caribbean and Asian fares in April more than offset lower European fares. Export air passenger fares rose 9.1 percent from April 2022 to April 2023. Prices for export air freight fell 2.1 percent in April following a 4.4-percent drop in March. Those were the first monthly declines since the index decreased 2.9 percent in November 2022. Export air freight prices fell 8.6 percent over the past 12 months, the largest over-the-year drop since the index declined 9.0 percent in December 2009.

U.S. Import and Export Price Index data for May 2023 are scheduled for release on Thursday, June 15, 2023, at 8:30 a.m. (ET).

Table 1. U.S. import price indexes and percent changes for selected categories of goods: April 2022 to April 2023

[2000=100, unless otherwise noted]

Description	End Use	Relative importance Mar. 2023 ¹	Index		Percent change				
			Mar. 2023	Apr. 2023	Annual Apr. 2022 to Apr. 2023	Monthly			
						Dec. 2022 to Jan. 2023	Jan. 2023 to Feb. 2023	Feb. 2023 to Mar. 2023	Mar. 2023 to Apr. 2023
All commodities		100.000	139.8	140.4	-4.8	-0.4	-0.3	-0.8	0.4
All imports excluding food and fuels (Dec. 2010=100)		84.054	108.5	108.5	-2.0	0.1	0.3	-0.5	0.0
All imports excluding petroleum		91.714	124.2	124.1	-2.1	0.3	-0.4	-0.6	-0.1
All imports excluding fuels (Dec. 2001=100)		91.208	127.9	127.9	-1.9	0.2	0.3	-0.5	0.0
Foods, feeds, & beverages	0	7.154	212.7	213.2	0.2	1.3	1.3	-0.9	0.2
Agricultural foods, feeds & beverages, excluding distilled beverages.....	00	5.667	233.2	234.9	1.8	1.3	1.3	-1.3	0.7
Nonagricultural foods (fish, distilled beverages).....	01	1.487	165.0	162.2	-5.8	1.3	1.3	0.6	-1.7
Industrial supplies & materials	1	24.706	244.2	247.8	-17.0	-2.1	-2.0	-2.4	1.5
Industrial supplies & materials excluding petroleum.....		16.649	207.7	206.3	-12.2	0.4	-3.4	-2.4	-0.7
Industrial supplies & materials excluding fuels (Dec. 2001=100).....		15.928	231.1	230.6	-11.1	-0.4	0.1	-1.5	-0.2
Industrial supplies & materials, durable....		10.092	226.0	225.2	-12.2	-0.3	1.6	-1.4	-0.4
Industrial supplies & materials nondurable excluding petroleum.....		6.327	186.7	184.5	-10.9	1.3	-10.2	-3.9	-1.2
Fuels & lubricants.....	10	8.792	272.8	285.1	-25.9	-4.8	-5.6	-3.9	4.5
Petroleum & petroleum products.....	100	8.286	289.1	305.5	-25.7	-6.7	-0.1	-2.5	5.7
Crude petroleum.....	10000	5.070	287.3	308.6	-29.0	-3.0	-0.1	-0.7	7.4
Fuels, n.e.s.-coals & gas.....	101	0.505	205.6	179.5	-37.3	9.3	-45.4	-23.1	-12.7
Natural gas.....	10110	0.389	184.0	152.0	-45.7	10.3	-49.9	-28.8	-17.4
Paper & paper base stocks.....	11	0.541	143.9	138.9	6.6	-0.5	-1.7	-1.9	-3.5
Materials associated with nondurable supplies & materials.....	12	5.280	200.0	200.8	-9.7	-0.4	-2.5	-1.6	0.4
Selected building materials.....	13	1.769	192.7	186.2	-19.6	-2.5	2.4	-0.2	-3.4
Unfinished metals related to durable goods.....	14	4.152	341.2	342.2	-17.6	0.1	2.2	-3.0	0.3
Finished metals related to durable goods.....	15	2.325	215.6	219.5	-3.5	0.4	0.1	-0.9	1.8
Nonmetals related to durable goods.....	16	1.847	129.1	127.3	0.1	0.0	1.4	0.1	-1.4
Capital goods	2	27.883	93.7	93.6	1.1	0.3	0.2	-0.1	-0.1
Electric generating equipment.....	20	3.751	129.6	130.2	1.5	0.1	0.2	0.0	0.5
Nonelectrical machinery.....	21	22.747	84.7	84.4	0.4	0.2	0.1	-0.1	-0.4
Transportation equipment excluding motor vehicles (Dec. 2001=100).....	22	1.384	150.7	152.3	7.9	0.7	0.7	0.5	1.1
Automotive vehicles, parts & engines	3	12.799	117.5	117.5	1.9	0.4	0.0	-0.2	0.0
Consumer goods, excluding automobiles	4	27.459	110.1	110.3	-0.2	0.1	0.4	-0.3	0.2
Nondurables, manufactured.....	40	12.815	125.1	125.3	0.1	0.4	0.2	-0.1	0.2
Durables, manufactured.....	41	13.650	95.5	95.5	-0.3	-0.1	0.3	-0.2	0.0
Nonmanufactured consumer goods.....	42	0.994	128.0	129.4	-4.3	-0.8	4.4	-4.4	1.1

¹ Relative importance figures are based on 2021 trade values.

NOTES: Data may be revised in each of the 3 months after original publication.

Dash = Not available

Table 2. U.S. export price indexes and percent changes for selected categories of goods: April 2022 to April 2023

[2000=100, unless otherwise noted]

Description	End Use	Relative importance Mar. 2023 ¹	Index		Percent change				
			Mar. 2023	Apr. 2023	Annual Apr. 2022 to Apr. 2023	Monthly			
						Dec. 2022 to Jan. 2023	Jan. 2023 to Feb. 2023	Feb. 2023 to Mar. 2023	Mar. 2023 to Apr. 2023
All commodities.....		100.000	150.8	151.1	-5.9	0.2	0.4	-0.6	0.2
Agricultural commodities.....		11.101	248.1	249.2	-3.9	-0.8	0.8	-1.9	0.4
All exports excluding food and fuels (Dec. 2010=100).....		72.975	114.9	115.1	-1.2	0.5	0.7	0.0	0.2
All exports excluding fuels (June 2022=100).....		83.179	100.0	100.2	-	0.8	0.7	-0.1	0.2
Nonagricultural commodities.....		88.899	143.3	143.6	-6.3	0.3	0.3	-0.5	0.2
Foods, feeds, & beverages.....	0	10.204	251.0	252.2	-3.9	-0.7	0.9	-1.9	0.5
Agricultural foods, feeds & beverages, excluding distilled beverages.....	00	9.778	252.7	254.2	-3.5	-0.8	0.9	-1.9	0.6
Nonagricultural foods (fish, distilled beverages).....	01	0.426	218.7	213.5	-13.3	-0.2	-0.9	-1.1	-2.4
Industrial supplies & materials.....	1	38.750	206.3	206.6	-15.0	-0.3	0.1	-1.4	0.1
Industrial supplies & materials, durable....		10.918	214.4	217.2	-7.7	0.3	1.0	-0.9	1.3
Industrial supplies & materials, nondurable.....		27.832	200.4	199.8	-17.4	-0.5	-0.2	-1.5	-0.3
Agricultural industrial supplies & materials.....	10	1.291	227.2	225.0	-7.2	-1.4	0.0	-1.2	-1.0
Nonagricultural industrial supplies & materials.....		37.459	205.7	206.1	-15.2	-0.3	0.1	-1.4	0.2
Fuels & lubricants.....	11	16.821	251.5	251.7	-22.3	-0.3	-1.1	-2.5	0.1
Nonagricultural supplies & materials excluding fuels & building materials....	12	19.820	198.8	199.4	-8.1	-0.2	1.3	-0.5	0.3
Selected building materials.....	13	0.818	152.0	150.8	-12.3	-2.2	0.7	0.7	-0.8
Capital goods.....	2	30.335	120.7	121.0	2.5	0.7	0.6	0.2	0.2
Electrical generating equipment.....	20	3.398	137.3	137.5	4.6	0.4	0.6	0.1	0.1
Nonelectrical machinery.....	21	22.242	101.3	101.5	1.3	0.6	0.3	0.3	0.2
Transportation equipment excluding motor vehicles (Dec. 2001=100).....	22	4.696	205.7	207.3	6.2	1.4	1.6	0.5	0.8
Automotive vehicles, parts & engines.....	3	8.100	124.0	123.6	3.0	1.5	-0.1	0.1	-0.3
Consumer goods, excluding automotives.....	4	12.610	118.9	119.2	2.1	1.0	0.7	0.2	0.3
Nondurables, manufactured.....	40	6.653	110.1	110.7	0.0	0.7	0.6	-0.1	0.5
Durables, manufactured.....	41	4.696	118.6	118.7	4.6	1.7	0.1	0.5	0.1
Nonmanufactured consumer goods (Dec. 2018=100).....	42	1.260	131.8	131.6	4.4	0.1	3.4	0.1	-0.2

¹ Relative importance figures are based on 2021 trade values.

NOTES: Data may be revised in each of the 3 months after original publication.

Dash = Not available

Table 3. U.S. import price indexes and percent changes for selected industries: April 2022 to April 2023
 [December 2005=100, unless otherwise noted]

Description	NAICS	Relative importance Mar. 2023 ¹	Index		Percent change				
			Mar. 2023	Apr. 2023	Annual Apr. 2022 to Apr. 2023	Monthly			
						Dec. 2022 to Jan. 2023	Jan. 2023 to Feb. 2023	Feb. 2023 to Mar. 2023	Mar. 2023 to Apr. 2023
Nonmanufacturing.....		8.020	142.3	149.2	-22.7	-0.2	-4.5	-3.6	4.8
Agriculture, forestry, fishing and hunting.....	11	2.179	216.2	217.3	-1.8	1.7	3.6	-4.4	0.5
Crop production.....	111	1.735	223.8	223.7	-2.8	1.8	2.3	-5.4	0.0
Animal production (Dec. 2022=100).....	112	0.266	113.0	117.0	–	2.7	13.7	-3.3	3.5
Mining.....	21	5.840	136.2	145.0	-27.9	-0.9	-7.2	-3.2	6.5
Oil and gas extraction.....	211	5.536	133.6	140.9	-30.1	-1.2	-8.1	-3.4	5.5
Mining (except oil and gas) (Dec. 2022=100).....	212	0.305	122.1	152.7	–	6.5	14.8	-0.2	25.1
Manufacturing.....		91.602	122.5	122.6	-2.5	-0.4	0.2	-0.6	0.1
Manufacturing, part 1.....	31	11.439	138.8	139.7	0.9	0.3	0.4	-0.2	0.6
Food manufacturing.....	311	4.257	188.5	191.4	1.2	0.7	1.1	-0.4	1.5
Beverage and tobacco product manufacturing.....	312	1.175	139.4	139.7	3.8	1.6	0.8	0.7	0.2
Apparel manufacturing.....	315	3.219	119.1	119.4	2.7	-0.1	-0.1	-0.3	0.3
Leather and allied product manufacturing.....	316	1.362	125.9	125.9	-1.3	-0.2	-0.3	-0.3	0.0
Manufacturing, part 2.....	32	20.007	143.7	143.8	-7.9	-2.0	-0.5	-1.3	0.1
Paper manufacturing.....	322	0.986	124.7	122.3	2.3	-0.4	-0.9	-1.2	-1.9
Petroleum and coal products manufacturing.....	324	2.971	137.2	141.7	-14.6	-12.4	-0.3	-5.2	3.3
Chemical manufacturing.....	325	11.222	151.9	151.9	-6.3	0.6	-1.3	-0.8	0.0
Plastics and rubber products manufacturing.....	326	2.639	133.4	133.2	0.7	-0.8	0.9	0.1	-0.1
Nonmetallic mineral product manufacturing.....	327	1.056	143.1	142.8	1.3	0.4	0.3	0.2	-0.2
Manufacturing, part 3.....	33	60.156	112.9	112.9	-1.2	0.1	0.3	-0.4	0.0
Primary metal manufacturing.....	331	4.937	229.6	230.5	-13.8	0.1	1.6	-3.2	0.4
Fabricated metal product manufacturing...	332	3.333	149.2	149.7	-1.9	-0.5	-0.4	0.0	0.3
Machinery manufacturing.....	333	7.699	131.1	131.1	3.4	1.6	0.5	0.2	0.0
Computer and electronic product manufacturing.....	334	16.962	73.5	73.1	-1.2	-0.4	0.0	-0.4	-0.5
Electrical equipment, appliance, and component manufacturing.....	335	5.975	127.4	128.0	0.9	0.0	0.4	0.2	0.5
Transportation equipment manufacturing..	336	13.015	116.6	116.6	2.1	0.3	0.0	0.0	0.0
Furniture and related product manufacturing.....	337	2.014	128.8	128.7	1.7	-0.5	0.2	-0.2	-0.1
Miscellaneous manufacturing.....	339	6.221	127.2	127.7	0.4	0.2	0.5	-0.1	0.4

¹ Relative importance figures are based on 2021 trade values.

NOTES: Data may be revised in each of the 3 months after original publication.

Dash = Not available

Table 4. U.S. export price indexes and percent changes for selected industries: April 2022 to April 2023
 [December 2005=100, unless otherwise noted]

Description	NAICS	Relative importance Mar. 2023 ¹	Index		Percent change				
			Mar. 2023	Apr. 2023	Annual Apr. 2022 to Apr. 2023	Monthly			
						Dec. 2022 to Jan. 2023	Jan. 2023 to Feb. 2023	Feb. 2023 to Mar. 2023	Mar. 2023 to Apr. 2023
Nonmanufacturing		15.253	184.5	184.7	-21.1	-3.6	-0.8	-3.1	0.1
Agriculture, forestry, fishing and hunting	11	5.653	216.6	217.0	-9.9	-1.7	1.3	-3.0	0.2
Crop production.....	111	5.331	230.0	230.7	-9.7	-1.9	1.3	-3.1	0.3
Mining	21	9.600	111.5	111.5	-26.7	-4.7	-1.9	-3.3	0.0
Oil and gas extraction (Dec. 2021=100)...	211	8.079	96.8	96.1	-28.7	-5.8	-2.4	-4.3	-0.7
Mining (except oil and gas).....	212	1.521	156.8	163.1	-15.1	2.2	1.3	2.3	4.0
Manufacturing		83.064	135.0	135.2	-2.4	0.7	0.5	-0.1	0.1
Manufacturing, part 1	31	6.951	175.6	176.1	0.2	-0.3	0.3	-0.7	0.3
Food manufacturing.....	311	5.134	206.8	207.5	-0.1	-0.5	0.2	-1.0	0.3
Beverage and tobacco product manufacturing.....	312	0.546	149.4	150.4	5.0	-0.2	2.7	0.0	0.7
Manufacturing, part 2	32	26.552	140.4	140.2	-9.0	1.1	0.5	-0.2	-0.1
Wood product manufacturing (Dec. 2017=100).....	321	0.416	119.9	120.3	-16.1	0.6	0.5	1.6	0.3
Paper manufacturing.....	322	1.647	155.5	151.7	5.1	1.3	-0.2	-2.3	-2.4
Petroleum and coal products manufacturing.....	324	6.943	160.8	160.6	-18.1	5.2	0.1	-1.4	-0.1
Chemical manufacturing.....	325	14.347	135.4	135.6	-6.4	-0.6	0.9	0.4	0.1
Plastics and rubber products manufacturing.....	326	2.258	133.7	133.1	2.5	0.8	-0.5	0.2	-0.4
Nonmetallic mineral product manufacturing.....	327	0.750	130.8	130.7	-2.8	-2.6	0.8	0.1	-0.1
Manufacturing, part 3	33	49.562	128.4	128.8	1.3	0.6	0.5	0.0	0.3
Primary metal manufacturing.....	331	4.249	203.6	209.8	-11.7	-1.5	1.8	-3.0	3.0
Machinery manufacturing.....	333	9.344	148.3	148.9	5.5	1.5	0.5	0.5	0.4
Computer and electronic product manufacturing.....	334	12.717	83.6	83.5	-1.6	-0.2	0.1	0.0	-0.1
Electrical equipment, appliance, and component manufacturing.....	335	3.520	135.3	135.5	4.8	0.9	0.5	0.1	0.1
Transportation equipment manufacturing..	336	11.875	142.5	142.6	4.2	1.6	0.6	0.1	0.1
Miscellaneous manufacturing.....	339	4.846	137.5	137.5	4.0	0.6	1.1	0.8	0.0

¹ Relative importance figures are based on 2021 trade values.

NOTES: Data may be revised in each of the 3 months after original publication.

Dash = Not available

Table 5. U.S. import price indexes and percent changes for selected categories of goods: April 2022 to April 2023

[2000=100, unless otherwise noted]

Description	Harmonized system	Relative importance Mar. 2023 ¹	Index		Percent change				
			Mar. 2023	Apr. 2023	Annual	Monthly			
					Apr. 2022 to Apr. 2023	Dec. 2022 to Jan. 2023	Jan. 2023 to Feb. 2023	Feb. 2023 to Mar. 2023	Mar. 2023 to Apr. 2023
Live animals; animal products.....	I	1.577	237.3	240.9	-2.9	0.8	4.7	-0.3	1.5
Meat and edible meat offal.....	02	0.379	300.8	316.2	-8.8	-2.1	0.5	1.1	5.1
Fish and crustaceans, molluscs and other aquatic invertebrates.....	03	0.856	164.9	159.9	-7.3	1.9	2.4	1.0	-3.0
Vegetable products.....	II	2.193	251.5	254.7	0.3	1.3	1.8	-3.8	1.3
Edible vegetables, roots, and tubers.....	07	0.522	467.4	451.5	2.6	3.3	-6.8	-1.8	-3.4
Edible fruit and nuts; peel of citrus fruit or melons.....	08	0.794	125.9	130.0	0.3	-0.6	4.7	-4.2	3.3
Coffee, tea, mate and spices.....	09	0.396	305.8	303.9	-6.5	5.0	1.9	0.4	-0.6
Animal or vegetable fats and oils (Dec. 2009=100).....	III	0.381	146.4	148.2	-10.7	1.7	-2.5	-2.9	1.2
Prepared foodstuffs, beverages, and tobacco.....	IV	3.373	195.0	194.9	4.9	0.9	0.6	0.6	-0.1
Sugars and sugar confectionary (Dec. 2021=100).....	17	0.211	112.9	113.9	8.2	2.2	2.0	0.9	0.9
Cocoa and cocoa preparations (Dec. 2009=100).....	18	0.234	115.7	121.8	19.1	1.2	0.0	2.1	5.3
Miscellaneous edible preparations (Dec. 2022=100).....	21	0.402	100.0	95.3	-	0.0	0.0	0.0	-4.7
Beverages, spirits, and vinegar.....	22	1.107	153.0	153.3	3.6	1.8	0.8	0.9	0.2
Mineral products.....	V	8.926	280.5	295.8	-24.7	-4.9	-5.1	-3.9	5.5
Mineral fuels, oils and residuals, bituminous substances and mineral waxes.....	27	8.550	272.3	285.1	-26.4	-5.2	-5.7	-4.1	4.7
Products of the chemical or allied industries.....	VI	10.672	173.4	172.9	-4.0	1.1	-0.3	-1.0	-0.3
Inorganic chemicals.....	28	0.638	525.3	513.6	-5.7	1.1	-2.3	-2.8	-2.2
Organic chemicals.....	29	2.418	146.4	146.0	-3.9	3.1	0.1	-1.3	-0.3
Pharmaceutical products.....	30	5.261	147.9	148.3	-0.9	0.4	0.7	0.0	0.3
Fertilizers (Dec. 2022=100).....	31	0.391	73.1	68.2	-	-1.7	-16.5	-11.0	-6.7
Tanning extracts; dye, pigments, varnish, paints & putty (Dec. 2022=100).....	32	0.206	102.1	100.7	-	0.7	2.5	-1.1	-1.4
Miscellaneous chemical products.....	38	0.841	121.8	122.4	4.0	1.3	0.7	-0.9	0.5
Plastics and articles thereof; rubber and articles thereof.....	VII	4.158	157.7	158.1	-2.1	-0.9	0.4	0.6	0.3
Plastics and articles thereof.....	39	2.722	158.3	158.5	-4.3	-1.5	0.0	1.0	0.1
Rubber and articles thereof.....	40	1.435	159.9	160.7	3.0	0.2	1.2	-0.1	0.5
Woodpulp, recovered paper, and paper products.....	X	0.987	131.6	127.3	0.6	-0.4	-0.9	-0.8	-3.3
Textile and textile articles.....	XI	4.441	120.8	121.1	0.9	-0.2	0.1	-0.1	0.2
Articles of apparel and clothing accessories, not knitted or crocheted.....	62	1.219	127.5	127.7	2.1	0.0	-0.2	0.1	0.2
Headgear, umbrellas, artificial flowers, etc.....	XII	1.195	125.7	125.6	-0.6	-0.4	-0.2	-0.4	-0.1
Footwear and parts of such articles.....	64	0.945	122.3	122.3	-0.9	-0.5	-0.4	-0.4	0.0
Stone, plaster, cement, asbestos, ceramics, glass etc.....	XIII	0.926	136.2	136.9	1.8	0.5	0.7	0.4	0.5
Articles of stone, plaster, cement, asbestos, or mica (Dec. 2020=100).....	68	0.344	102.6	102.7	1.5	-0.6	1.2	0.3	0.1
Glass and glassware (Dec. 2021=100).....	70	0.316	103.8	105.8	4.2	2.4	0.5	0.6	1.9
Pearls, stones, precious metals, imitation jewelry, and coins.....	XIV	3.242	227.6	234.2	-7.2	1.8	0.6	-4.6	2.9

See footnotes at end of table.

Table 5. U.S. import price indexes and percent changes for selected categories of goods: April 2022 to April 2023 — Continued
 [2000=100, unless otherwise noted]

Description	Harmoni- zied system	Relative importance Mar. 2023 ¹	Index		Percent change				
			Mar. 2023	Apr. 2023	Annual	Monthly			
					Apr. 2022 to Apr. 2023	Dec. 2022 to Jan. 2023	Jan. 2023 to Feb. 2023	Feb. 2023 to Mar. 2023	Mar. 2023 to Apr. 2023
Base metals and articles of base metals. . .	XV	6.401	238.7	236.2	-10.8	0.1	0.9	-0.4	-1.0
Articles of iron or steel.....	73	1.889	204.9	203.9	-3.6	0.8	-0.4	0.0	-0.5
Copper and articles thereof.....	74	0.565	394.3	389.3	-11.9	-0.7	4.7	-0.3	-1.3
Aluminum and articles thereof.....	76	1.087	193.3	192.2	-13.6	0.6	2.4	-2.7	-0.6
Tools, implements, cutlery, spoons and forks, of base metal; parts thereof.....	82	0.450	132.2	132.1	2.2	1.2	0.3	0.4	-0.1
Miscellaneous articles of base metal.....	83	0.561	150.6	148.3	-1.8	-0.1	-0.7	-0.1	-1.5
Machinery, electrical equipment, TV image and sound recorders, parts, etc.....	XVI	30.063	82.9	82.8	0.2	0.1	0.1	-0.1	-0.1
Machinery and mechanical appliances; parts thereof.....	84	15.337	90.0	89.5	0.3	0.3	0.3	-0.2	-0.6
Electrical machinery and equip, sound and TV recorders & reproducers, parts.....	85	14.726	76.2	76.4	0.0	-0.3	0.1	-0.1	0.3
Vehicles, aircraft, vessels and associated transport equipment.....	XVII	10.856	121.4	121.2	2.2	0.4	-0.1	-0.1	-0.2
Motor vehicles and their parts.....	87	10.229	120.4	120.2	2.0	0.5	-0.1	-0.2	-0.2
Aircraft, spacecraft, and parts thereof (Dec. 2020=100).....	88	0.516	108.3	108.4	5.1	0.0	0.1	0.3	0.1
Optical, photo, measuring, medical & musical instruments; & timepieces.....	XVIII	4.109	106.9	107.3	1.3	0.3	0.2	0.5	0.4
Optical, photographic, measuring and medical instruments.....	90	3.821	102.6	103.0	1.2	0.0	0.2	0.5	0.4
Miscellaneous manufactured articles.....	XX	4.847	120.2	120.4	2.0	-0.3	0.4	0.0	0.2
Furniture & stuffed furnishings; lamps & lighting fittings, nesoi; prefab bldgs.....	94	2.758	127.6	127.7	1.1	-0.2	0.2	-0.2	0.1
Toys, games and sports equipment; parts and accessories thereof.....	95	1.789	106.5	106.8	2.6	-0.2	0.1	0.1	0.3
Miscellaneous manufactured articles.....	96	0.300	146.7	147.3	8.1	0.7	5.2	0.2	0.4

¹ Relative importance figures are based on 2021 trade values.

NOTES: Data may be revised in each of the 3 months after original publication.

Dash = Not available

Table 6. U.S. export price indexes and percent changes for selected categories of goods: April 2022 to April 2023

[2000=100, unless otherwise noted]

Description	Harmonized system	Relative importance Mar. 2023 ¹	Index		Percent change				
			Mar. 2023	Apr. 2023	Annual Apr. 2022 to Apr. 2023	Monthly			
						Dec. 2022 to Jan. 2023	Jan. 2023 to Feb. 2023	Feb. 2023 to Mar. 2023	Mar. 2023 to Apr. 2023
Live animals; animal products.....	I	2.091	265.8	265.7	-8.0	-0.3	-1.2	-1.7	0.0
Meat & edible meat offal (Dec. 2006=100)...	02	1.237	211.8	215.6	-7.9	-0.4	-1.3	1.8	1.8
Fish and crustaceans, mollusks and aquatic invertebrates (Dec. 2022=100).....	03	0.271	95.9	92.6	-	-0.6	-1.3	-2.2	-3.4
Vegetable products.....	II	5.403	287.4	289.6	-6.6	-1.3	2.1	-2.9	0.8
Edible fruit and nuts; peel of citrus fruit or melons.....	08	0.815	137.8	138.9	-3.3	-1.2	-0.3	0.6	0.8
Cereals.....	10	1.954	321.2	325.8	-12.0	1.3	1.2	-4.7	1.4
Oilseeds and misc. grains, seeds, fruits, plants, straw and fodder.....	12	2.099	311.2	309.5	-6.5	2.3	1.2	-2.5	-0.5
Prepared foodstuffs, beverages, and tobacco.....	IV	3.027	188.3	189.4	3.5	0.4	0.4	-0.4	0.6
Miscellaneous edible preparations (Dec. 2017=100).....	21	0.668	117.2	117.2	10.2	4.0	1.6	0.4	0.0
Beverages, spirits, and vinegar (Dec. 2008=100).....	22	0.468	109.3	109.3	-0.3	0.5	0.3	0.6	0.0
Residues and waste from the food industries; prepared animal feed.....	23	0.799	317.2	322.2	-4.2	-4.1	0.9	-3.1	1.6
Mineral products.....	V	16.569	300.9	301.0	-23.3	-0.9	-1.2	-2.6	0.0
Ores, slag and ash (Dec. 2012=100).....	26	0.533	143.2	146.9	-8.8	7.8	3.2	0.1	2.6
Mineral fuels, oils and residuals, bituminous substances and mineral waxes.....	27	15.818	287.8	287.7	-24.0	-1.3	-1.3	-2.7	0.0
Products of the chemical or allied industries.....	VI	12.822	164.0	164.3	-0.8	-0.7	1.1	-0.1	0.2
Pharmaceutical products.....	30	4.326	107.2	107.9	-0.3	1.1	0.5	0.0	0.7
Essential oils and resinoids; perfumery cosmetic or toilet preparations.....	33	0.844	147.2	149.3	6.7	3.3	1.1	-0.1	1.4
Soap; lubricants; waxes, polishing or scouring products; candles, pastes.....	34	0.466	136.3	136.3	3.0	0.5	0.1	0.0	0.0
Miscellaneous chemical products.....	38	2.241	190.8	192.6	1.9	2.7	0.5	0.4	0.9
Plastics and articles thereof; rubber and articles thereof.....	VII	4.592	160.5	160.1	-9.8	0.3	0.1	0.9	-0.2
Plastics and articles thereof.....	39	3.804	158.3	157.9	-11.4	0.4	0.1	1.2	-0.3
Rubber and articles thereof.....	40	0.788	169.1	168.6	1.6	-0.1	0.2	0.2	-0.3
Wood, wood charcoal, cork, straw, baskets and wickerwork (Dec. 2014=100).....	IX	0.495	114.4	113.0	-19.7	0.2	0.4	1.5	-1.2
Woodpulp, recovered paper, and paper products.....	X	1.783	153.5	149.8	-0.9	2.3	1.3	-2.9	-2.4
Woodpulp and recovered paper (Dec. 2019=100).....	47	0.588	177.9	160.1	-8.1	2.8	4.0	-1.1	-10.0
Paper and paperboard; articles of paper pulp, paper or paperboard.....	48	0.958	146.0	148.4	3.6	2.6	-0.4	-4.6	1.6
Cotton, including yarns and woven fabrics thereof.....	52	0.497	164.8	160.2	-20.3	-3.8	-1.6	-3.7	-2.8
Stone, plaster, cement, asbestos, ceramics, glass etc.....	XIII	0.730	145.9	146.2	-0.3	-1.6	0.6	0.0	0.2
Glass and glassware (Dec. 2019=100).....	70	0.445	110.2	110.9	1.1	-2.1	0.0	0.0	0.6
Pearls, stones, precious metals, imitation jewelry, and coins.....	XIV	4.544	314.4	324.6	-7.3	1.0	1.2	-3.1	3.2
Base metals and articles of base metals. ...	XV	4.551	214.7	214.5	-7.4	-1.1	1.8	0.9	-0.1
Copper and articles thereof.....	74	0.596	267.7	272.3	-8.1	-3.3	7.5	-4.9	1.7
Aluminum and articles thereof.....	76	0.690	150.2	148.2	-14.6	1.9	1.5	-0.3	-1.3

See footnotes at end of table.

Table 6. U.S. export price indexes and percent changes for selected categories of goods: April 2022 to April 2023 — Continued

[2000=100, unless otherwise noted]

Description	Harmonized system	Relative importance Mar. 2023 ¹	Index		Percent change				
			Mar. 2023	Apr. 2023	Annual	Monthly			
					Apr. 2022 to Apr. 2023	Dec. 2022 to Jan. 2023	Jan. 2023 to Feb. 2023	Feb. 2023 to Mar. 2023	Mar. 2023 to Apr. 2023
Miscellaneous articles of base metal (Dec. 2022=100).....	83	0.314	101.4	101.4	—	0.2	-1.5	2.7	0.0
Machinery, electrical equipment, TV image and sound recorders, parts, etc.....	XVI	25.547	106.1	106.3	2.5	0.9	0.6	0.0	0.2
Machinery and mechanical appliances; parts thereof.....	84	14.725	128.7	129.4	4.1	1.5	0.8	0.2	0.5
Electrical machinery and equipment and parts and accessories thereof.....	85	10.822	82.4	82.0	0.2	0.0	0.4	-0.2	-0.5
Vehicles, aircraft, vessels and associated transport equipment.....	XVII	8.977	150.2	150.2	2.7	0.7	0.2	0.1	0.0
Motor vehicles and their parts.....	87	6.780	125.3	124.9	1.6	0.6	-0.2	0.1	-0.3
Optical, photo, measuring, medical & musical instruments; & timepieces.....	XVIII	5.497	116.2	116.7	2.5	0.6	0.2	1.0	0.4
Miscellaneous manufactured articles.....	XX	1.198	136.2	136.7	6.7	1.5	0.2	-0.3	0.4
Furniture; stuffed furnishings; lamps and lighting fittings nesoi.....	94	0.570	148.7	149.9	-0.3	0.5	0.0	-0.5	0.8
Toys, games and sports equipment; parts and accessories thereof.....	95	0.483	117.8	117.9	18.7	3.1	0.3	-0.1	0.1

¹ Relative importance figures are based on 2021 trade values.

NOTES: Data may be revised in each of the 3 months after original publication.

Dash = Not available

Table 7. U.S. import price indexes and percent changes by locality of origin: April 2022 to April 2023
 [2000=100, unless otherwise noted]

Description	Relative importance Mar. 2023 ¹	Index		Percent change				
		Mar. 2023	Apr. 2023	Annual Apr. 2022 to Apr. 2023	Monthly			
					Dec. 2022 to Jan. 2023	Jan. 2023 to Feb. 2023	Feb. 2023 to Mar. 2023	Mar. 2023 to Apr. 2023
Industrialized Countries²	100.000	143.9	144.7	-7.2	0.1	-1.2	-0.8	0.6
Nonmanufacturing.....	10.505	234.7	243.0	-30.9	0.2	-9.7	-1.9	3.5
Manufacturing.....	88.900	136.3	136.6	-2.6	0.1	-0.1	-0.7	0.2
Canada	100.000	172.5	172.9	-18.2	0.1	-4.0	-1.0	0.2
Nonmanufacturing.....	29.479	230.1	238.7	-32.2	0.2	-10.6	-2.0	3.7
Manufacturing.....	69.431	160.7	158.8	-9.2	-0.1	-0.9	-0.8	-1.2
European Union	100.000	154.5	155.3	1.7	0.9	0.4	-0.4	0.5
Manufacturing.....	99.163	150.3	151.0	2.2	1.0	0.4	-0.3	0.5
France (Dec. 2003=100)	100.000	146.1	150.6	5.2	1.8	0.8	0.0	3.1
Germany (Dec. 2003=100)	100.000	124.8	124.4	1.1	-0.1	0.1	-1.0	-0.3
United Kingdom (Dec. 2003=100)	100.000	134.7	137.4	0.4	1.7	-1.0	-0.8	2.0
Latin America³	100.000	169.1	170.2	-2.3	0.1	0.4	0.0	0.7
Nonmanufacturing.....	13.506	310.3	322.8	-15.3	-1.8	0.8	-2.6	4.0
Manufacturing.....	86.217	137.7	137.8	0.7	0.4	0.4	0.5	0.1
Mexico (Dec. 2003=100)	100.000	141.5	142.5	-0.6	0.5	0.1	-0.2	0.7
Nonmanufacturing (Dec. 2008=100).....	7.938	148.5	155.5	-23.1	-0.1	0.7	-2.6	4.7
Manufacturing (Dec. 2008=100).....	91.785	97.8	98.1	2.6	0.4	0.2	0.0	0.3
Pacific Rim (Dec. 2003=100)⁴	100.000	103.5	103.2	-2.0	-0.2	-0.2	-0.4	-0.3
China (Dec. 2003=100)	100.000	103.1	102.8	-1.9	-0.5	-0.1	-0.5	-0.3
Japan	100.000	100.6	101.0	0.8	0.1	-0.3	-0.3	0.4
Taiwan (Dec. 2018=100)	100.000	111.1	110.6	-0.3	0.2	-0.3	0.0	-0.5
Asian NICs⁵	100.000	96.7	95.8	-4.1	-0.3	0.1	-0.4	-0.9
ASEAN (Dec. 2003=100)⁶	100.000	103.3	103.2	-1.4	0.3	0.0	-0.3	-0.1
Asia Near East (Dec. 2003=100)⁷	100.000	217.4	221.9	-16.6	-1.8	-0.5	-1.3	2.1

¹ Relative importance figures are based on 2021 trade values.

² Western Europe, Canada, Japan, Australia, New Zealand, and South Africa.

³ Mexico, Central America, South America, and the Caribbean.

⁴ China, Japan, Australia, Brunei, Indonesia, Macao, Malaysia, New Zealand, Papua New Guinea, Philippines, and the Asian Newly Industrialized Countries.

⁵ Asian Newly Industrialized Countries - Hong Kong, Singapore, South Korea, and Taiwan.

⁶ Association of Southeast Asian Nations - Brunei, Cambodia, Indonesia, Laos, Malaysia, Myanmar, Philippines, Singapore, Thailand, and Vietnam.

⁷ Bahrain, Iran, Iraq, Israel, Jordan, Kuwait, Lebanon, Oman, Qatar, Saudi Arabia, Syria, United Arab Emirates, and Yemen.

NOTES: Data may be revised in each of the 3 months after original publication.

Regions are not mutually exclusive.

Dash = Not available

Table 8. U.S. export price indexes and percent changes by locality of destination: April 2022 to April 2023
 [December 2017=100, unless otherwise noted]

Description	Relative importance Mar. 2023 ¹	Index		Percent change				
		Mar. 2023	Apr. 2023	Annual Apr. 2022 to Apr. 2023	Monthly			
					Dec. 2022 to Jan. 2023	Jan. 2023 to Feb. 2023	Feb. 2023 to Mar. 2023	Mar. 2023 to Apr. 2023
Industrialized Countries²	100.000	120.0	120.7	-3.9	0.3	0.5	-0.6	0.6
Nonmanufacturing.....	13.015	143.6	144.1	-20.8	-0.6	1.2	-1.4	0.3
Manufacturing.....	85.218	117.5	118.2	0.0	0.3	0.5	-0.3	0.6
Canada	100.000	127.7	128.5	-1.7	-0.5	0.2	-0.9	0.6
Nonmanufacturing (Dec. 2020=100).....	7.603	133.0	136.0	-25.9	-16.3	-0.1	-2.7	2.3
Manufacturing (Dec. 2020=100).....	90.766	119.7	120.2	1.4	1.1	0.2	-0.7	0.4
European Union	100.000	117.1	118.5	-3.7	0.0	0.0	-0.1	1.2
Nonmanufacturing.....	15.452	136.8	144.6	-18.6	-0.7	1.1	-1.9	5.7
Manufacturing.....	82.732	113.4	113.9	0.6	0.1	0.0	0.3	0.4
Germany	100.000	115.2	116.7	3.0	1.9	-0.3	-0.1	1.3
Latin America³	100.000	126.2	125.6	-10.2	0.4	-0.7	-0.4	-0.5
Nonmanufacturing.....	9.672	150.5	144.4	-34.9	-9.7	-8.5	-2.1	-4.1
Manufacturing.....	89.754	124.6	124.4	-6.5	1.9	0.2	-0.2	-0.2
Mexico	100.000	125.4	124.9	-9.1	0.5	-0.9	-0.1	-0.4
Nonmanufacturing.....	8.532	131.4	122.9	-40.0	-12.4	-13.9	-0.2	-6.5
Manufacturing.....	90.889	125.9	126.1	-4.8	2.1	0.5	0.0	0.2
Pacific Rim⁴	100.000	116.0	117.4	-5.1	0.0	1.3	-0.9	1.2
Nonmanufacturing.....	21.970	128.3	133.6	-17.5	-0.1	3.4	-3.9	4.1
Manufacturing.....	76.839	114.6	114.9	1.0	0.3	1.0	0.0	0.3
China	100.000	111.8	112.6	-8.0	0.6	1.6	-0.8	0.7
Nonmanufacturing.....	28.623	117.3	121.6	-18.3	1.1	4.1	-2.7	3.7
Manufacturing.....	70.244	112.1	111.5	-1.2	0.4	0.5	0.1	-0.5
Japan	100.000	117.2	118.3	-7.8	-0.4	1.2	-1.3	0.9
Nonmanufacturing.....	26.793	140.8	147.6	-18.2	0.6	4.2	-2.8	4.8
Manufacturing.....	71.946	110.6	110.0	-1.3	-0.8	0.5	-0.5	-0.5

¹ Relative importance figures are based on 2021 trade values.

² Western Europe, Canada, Japan, Australia, New Zealand, and South Africa.

³ Mexico, Central America, South America, and the Caribbean.

⁴ China, Japan, Australia, Brunei, Indonesia, Macao, Malaysia, New Zealand, Papua New Guinea, Philippines, and the Asian Newly Industrialized Countries.

NOTES: Data may be revised in each of the 3 months after original publication.

Regions are not mutually exclusive.

Dash = Not available

Table 9. U.S. terms of trade indexes and percent changes by locality: April 2022 to April 2023¹
 [December 2017=100, unless otherwise noted]

Description	Index		Percent change				
	Mar. 2023	Apr. 2023	Annual	Monthly			
			Apr. 2022 to Apr. 2023	Dec. 2022 to Jan. 2023	Jan. 2023 to Feb. 2023	Feb. 2023 to Mar. 2023	Mar. 2023 to Apr. 2023
Industrialized Countries²	102.1	102.1	3.7	0.1	1.8	0.2	0.0
Canada	97.3	97.7	20.2	-0.6	4.4	0.2	0.4
European Union	102.0	102.7	-5.3	-0.9	-0.4	0.3	0.7
Germany	106.2	108.0	1.9	2.0	-0.5	1.0	1.7
Latin America³	111.1	109.9	-8.1	0.4	-1.1	-0.4	-1.1
Mexico	114.3	113.1	-8.5	0.0	-1.0	0.1	-1.0
Pacific Rim⁴	110.3	111.9	-3.2	0.2	1.5	-0.5	1.5
China	108.5	109.6	-6.2	1.1	1.7	-0.4	1.0
Japan	111.3	111.9	-8.5	-0.5	1.4	-1.0	0.5

¹ Terms of trade indexes are derived by dividing the export price index by the corresponding import price index and multiplying by 100.

² Western Europe, Canada, Japan, Australia, New Zealand, and South Africa.

³ Mexico, Central America, South America, and the Caribbean.

⁴ China, Japan, Australia, Brunei, Indonesia, Macao, Malaysia, New Zealand, Papua New Guinea, Philippines, and the Asian Newly Industrialized Countries.

NOTES: Data may be revised in each of the 3 months after original publication.

Regions are not mutually exclusive.

Dash = Not available

Table 10. U.S. international price indexes and percent changes for selected transportation services: April 2022 to April 2023

[2000=100, unless otherwise noted]

Description	Relative importance Mar. 2023 ¹	Index		Percent change				
		Mar. 2023	Apr. 2023	Annual	Monthly			
				Apr. 2022 to Apr. 2023	Dec. 2022 to Jan. 2023	Jan. 2023 to Feb. 2023	Feb. 2023 to Mar. 2023	Mar. 2023 to Apr. 2023
Air Freight								
Import Air Freight	100.000	232.8	240.1	-31.5	-11.8	-4.7	-2.7	3.1
Europe (Dec. 2003=100).....	33.829	257.4	219.5	-36.6	3.4	-0.6	-5.0	-14.7
Asia.....	65.664	203.2	228.5	-30.0	-18.7	-6.4	-2.0	12.5
Export Air Freight	100.000	194.3	190.2	-8.6	1.4	2.7	-4.4	-2.1
Europe (Dec. 2006=100).....	24.734	149.0	145.5	-16.3	0.3	-5.1	-2.3	-2.3
Asia (Dec. 2011=100).....	54.112	155.9	151.5	-7.2	1.4	5.9	-4.0	-2.8
Inbound Air Freight	100.000	175.1	173.4	-34.2	-3.8	-4.5	-2.7	-1.0
Europe (Dec. 2003=100).....	31.806	178.9	161.0	-28.3	7.5	-1.9	-2.7	-10.0
Asia.....	56.212	150.8	156.0	-39.4	-10.0	-5.2	-3.8	3.4
Outbound Air Freight	100.000	202.3	188.4	-15.4	-4.8	9.7	-4.8	-6.9
Europe (Dec. 2003=100).....	27.936	189.0	175.7	-15.9	-0.4	1.8	-4.4	-7.0
Asia.....	56.205	228.2	211.1	-15.6	-9.4	16.5	-5.5	-7.5
Air Passenger Fares								
Import Air Passenger Fares	100.000	180.5	170.7	1.5	-12.4	2.1	1.9	-5.4
Europe.....	43.405	193.8	189.3	2.2	1.0	-2.9	1.6	-2.3
Asia.....	5.456	167.9	174.0	-5.0	-17.2	-0.2	-1.5	3.6
Latin America/Caribbean.....	17.862	177.4	167.3	25.2	-21.6	10.3	5.7	-5.7
Export Air Passenger Fares	100.000	190.6	191.8	9.1	12.4	-13.7	6.4	0.6
Europe.....	19.306	214.8	210.8	2.4	6.5	-5.3	2.1	-1.9
Asia.....	10.327	179.7	194.2	4.3	13.3	-14.4	-8.7	8.1
Latin America/Caribbean.....	57.181	203.3	206.5	21.8	17.2	-18.3	12.4	1.6

¹ Relative importance figures are based on 2021 trade values.

NOTES: Data may be revised in each of the 3 months after original publication.

Dash = Not available

TECHNICAL NOTE

Import and Export Goods and Services Price Indexes - All indexes use a modified Laspeyres formula and are not seasonally adjusted. Price indexes are reweighted annually, with a 2-year lag in the weights. Published series use a base year of 2000=100 where possible. More detailed index series and additional information may be obtained at www.bls.gov/mxp or by calling (202) 691-7101.

Merchandise Goods Classification Systems - The merchandise price indexes are published using three classification systems. Items are classified by end use according to the Bureau of Economic Analysis Classification System, by industry according to the North American Industry Classification System (NAICS), and by product category according to the Harmonized System (HS). While classification by end use and product category are self-explanatory, some notes are in order for classifying items by industry. In the NAICS imports and exports tables, items are classified by output industry, not input industry. As an example, NAICS import index 326 (plastics and rubber products manufacturing) includes outputs such as manufactured plastic rather than inputs such as petroleum. The NAICS classification structure also matches the classification system used by the Producer Price Index (PPI) to produce the NAICS primary products indexes.

Import Price Goods Indexes - Items are classified by the Harmonized Tariff Schedule of the United States Annotated (TSUSA). Import prices are based on U.S. dollar prices paid by the U.S. importer. The prices are generally either "free on board" (f.o.b.) foreign port or "cost, insurance, and freight" (c.i.f.) U.S. port transaction prices, depending on the practices of the individual industry. The index for crude petroleum is calculated from data collected by the U.S. Department of Energy.

Export Price Goods Indexes - Items are classified by the Harmonized Schedule B classification system of the U.S. Bureau of the Census. The prices used are generally either "free alongside ship" (f.a.s.) factory or "free on board" (f.o.b.) transaction prices, depending on the practices of the individual industry. Prices used in the grain index, excluding rice, are obtained from the U.S. Department of Agriculture.

Services Price Indexes - Indexes for import and export air passenger fares calculate changes in the average revenue received per passenger by foreign carriers from U.S. residents and by U.S. carriers from foreign residents, respectively. Data are obtained from an airline consulting service and report on tickets sold by travel agencies, travel websites, and directly by the airlines. Taxes and fees are included in both the import and export air passenger fares indexes. Import air passenger fares data have used the airline consulting service source since September 2008. Before April 2018, the export air passenger fares data were collected directly by BLS from U.S. airlines. The air freight indexes are calculated from data collected directly from airlines. These data exclude mail and passenger baggage. The scope of the service being priced is the movement of freight from airport to airport only, and does not include any ground transportation or port service. The air freight indexes are presented using two definitions: balance of payments (which represents transactions between U.S. and foreign residents) and international (which represents transactions inbound to and outbound from the United States.) Fact sheets specifying detailed information for each services industry are available at www.bls.gov/mxp under "MXP Publications."

Import Price Indexes by Locality of Origin - Prices used in these indexes are a subset of the data collected for the import price indexes. The indexes are specific to a country, region, or grouping and, beginning with January 2002, are based on the North American Industry Classification System (NAICS) covering goods-producing industries. Nonmanufactured goods are defined as NAICS 11 and 21, and manufactured goods are defined as NAICS 31-33.

Export Price Indexes by Locality of Destination - Prices used in these indexes are a subset of the data collected for the export price indexes. The indexes are specific to a country, region, or grouping and are based on the North American Industry Classification System (NAICS) covering goods-producing industries. Nonmanufactured goods are defined as NAICS 11 and 21, and manufactured goods are defined as NAICS 31-33.

Terms of Trade Indexes - Terms of trade indexes measure the relative price of exports in terms of import prices for a specific country, region, or grouping. The indexes are calculated as one country, region, or grouping's all-export goods price index divided by the corresponding all-import goods price index on a scale of 100.

Relative Importance - A relative importance is a specific index's price-updated value share (expressed as a percentage) of overall imports or exports at a specific point in time. Relative importance values are affected by the trade weights at the point indexes are reweighted and index changes relative to other indexes since the reweight point. If an index is rising in value relative to other indexes over time, the relative importance will increase as well.

Revision Policy - To reflect the availability of late reports and corrections by respondents, monthly data may be revised in each of the 3 months after original publication. After 3 months, no further data revisions take place. For example, data first published in the January release will be subject to revision in the releases for February, March, and April.

Rounding Policy - Index values are rounded to the tenth decimal place after being calculated. All percent changes are then derived from the rounded index values and subsequently rounded to the tenth decimal place.

Uses of the Data - The primary use of the indexes is to deflate trade statistics, notably the foreign trade sector of the National Income and Product Accounts (NIPA) constructed by the Department of Commerce. Other published indexes are useful for general market analysis. For trade in international services, balance of payments indexes are used for deflating NIPA, while international indexes are more appropriate for market analysis.

Email Subscription - The U.S. import and export price indexes news release is available through an email subscription service at <https://subscriptions.bls.gov/accounts/USDOLBLS/subscriber/new>.

Additional Information - More detailed data are available on the Import/Export Price Indexes home page at www.bls.gov/mxp. For import and export price indexes data requests, send an email to mxpinfo@bls.gov.

If you are deaf, hard of hearing, or have a speech disability, please dial 7-1-1 to access telecommunications relay services.