



**Transmission of material in this release is embargoed until 8:30 a.m. (EST) Tuesday, December 13, 2016**

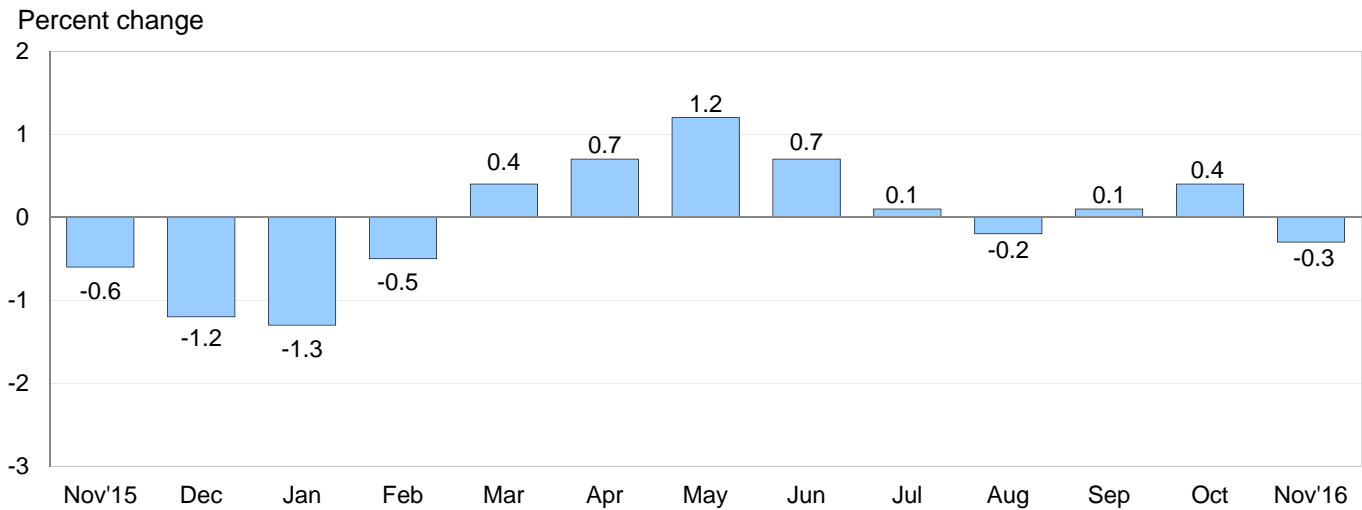
USDL-16-2300

Technical information: (202) 691-7101 • MXPinfo@bls.gov • www.bls.gov/mxp  
 Media contact: (202) 691-5902 • PressOffice@bls.gov

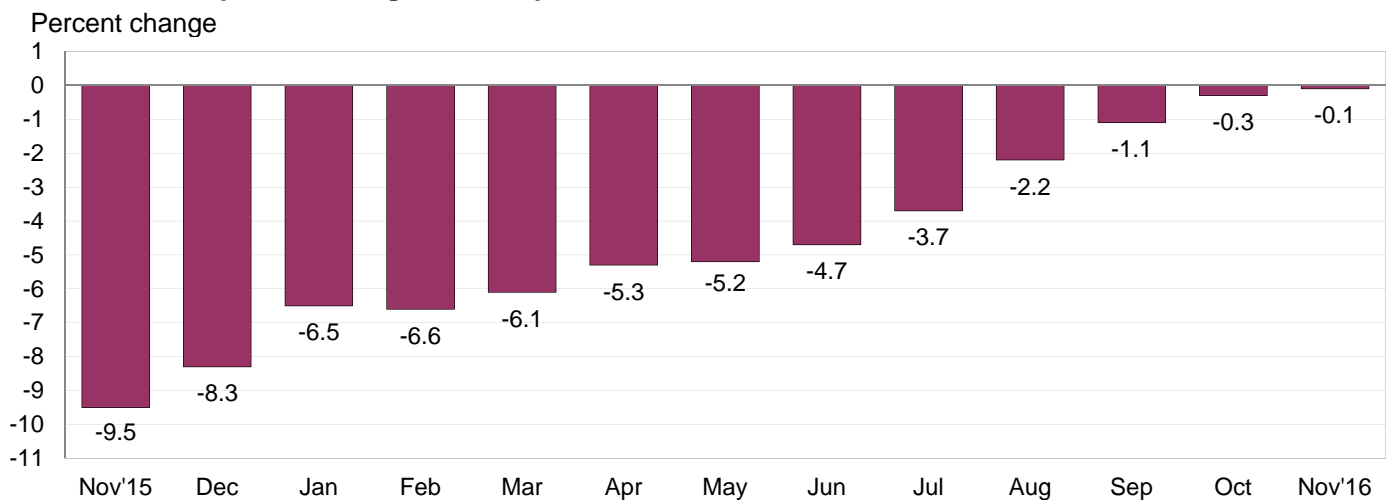
### U.S. IMPORT AND EXPORT PRICE INDEXES – NOVEMBER 2016

U.S. import prices fell 0.3 percent in November, the U.S. Bureau of Labor Statistics reported today, following increases of 0.4 percent and 0.1 percent the 2 previous months. The drop in November was primarily led by decreasing fuel prices. U.S. export prices also declined in November, edging down 0.1 percent, after a 0.2-percent increase the previous month.

**Chart 1. One-month percent change in the Import Price Index: November 2015 – November 2016**



**Chart 2. 12-month percent change in the Import Price Index: November 2015 – November 2016**



**All Imports:** The price index for U.S. imports declined 0.3 percent in November, the largest monthly decrease since the index fell 0.5 percent in February. Prior to November, import prices had trended up since February, with the only decline coming in August when the index fell 0.2 percent. Despite rising throughout much of 2016, import prices remained down on a 12-month basis, declining 0.1 percent between November 2015 and November 2016. The last over-the-year advance in import prices was a 0.9-percent increase in July 2014.

**Fuel Imports:** Fuel prices declined 3.9 percent in November, the largest monthly drop in the index since a 6.8-percent decrease in February. In November, a 4.7-percent decline in petroleum prices more than offset a 10.6-percent advance in natural gas prices. Natural gas prices increased 68.4 percent over the past 5 months. Import fuel prices advanced 2.7 percent for the year ended in November; a 2.4-percent increase in petroleum prices and a 13.6-percent rise in natural gas prices each contributed to the overall increase in fuel prices.

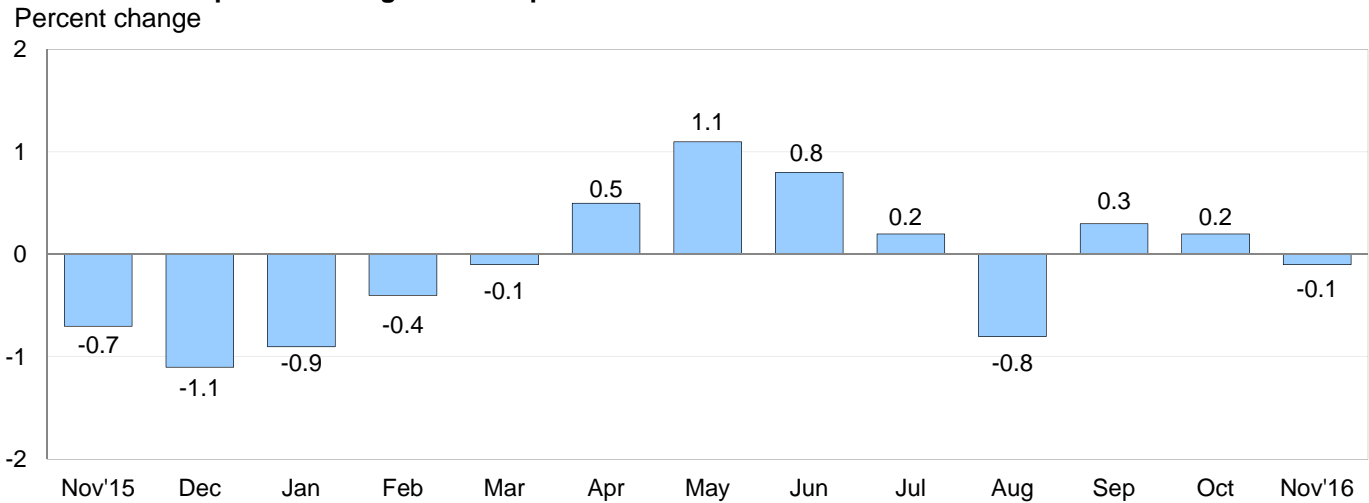
**All Imports Excluding Fuel:** Prices for nonfuel imports edged down 0.1 percent for the second consecutive month in November. Declining prices for finished goods and nonfuel industrial supplies more than offset higher foods, feeds, and beverages prices. Nonfuel prices declined 0.3 percent over the past year, after decreasing 3.2 percent between November 2014 and November 2015. The drop over the past year was driven by a 1.6-percent decline in capital goods prices and a 0.6-percent decrease in the price index for import consumer goods.

**Table A. Percent change in Import and Export Price Indexes, selected categories**

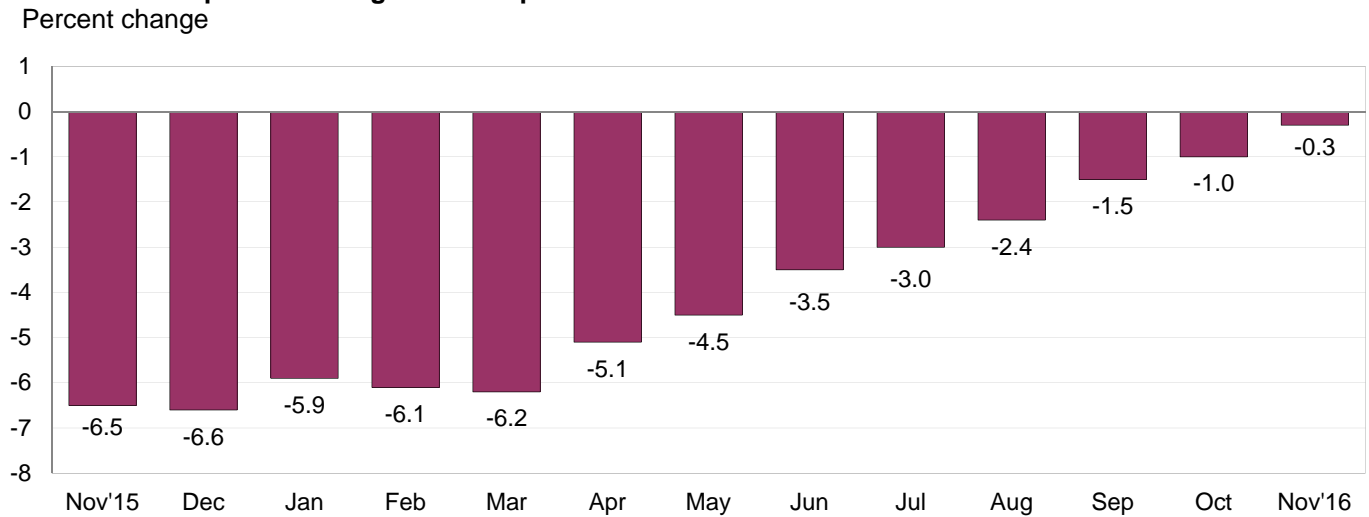
Month	IMPORTS			EXPORTS		
	All imports	Fuel imports	Nonfuel imports	All exports	Agricultural exports	Non-agricultural exports
<b>2015</b>						
November.....	-0.6	-4.0	-0.3	-0.7	-0.9	-0.7
December.....	-1.2	-10.0	-0.3	-1.1	-0.9	-1.1
<b>2016</b>						
January.....	-1.3	-15.6	-0.1	-0.9	-1.3	-0.9
February.....	-0.5	-6.8	-0.1	-0.4	0.7	-0.6
March.....	0.4	8.5	-0.1	-0.1	-2.1	0.2
April.....	0.7	9.8	0.1	0.5	0.8	0.4
May.....	1.2	12.7	0.3	1.1	3.0	1.0
June.....	0.7	10.5	-0.2	0.8	2.5	0.5
July.....	0.1	-2.1	0.3	0.2	-0.3	0.3
August.....	-0.2	-3.4	0.0 <sup>r</sup>	-0.8	-3.4 <sup>r</sup>	-0.6 <sup>r</sup>
September.....	0.1 <sup>r</sup>	0.5 <sup>r</sup>	0.0 <sup>r</sup>	0.3	-1.1	0.5 <sup>r</sup>
October.....	0.4 <sup>r</sup>	6.9 <sup>r</sup>	-0.1	0.2	0.5 <sup>r</sup>	0.2
November.....	-0.3	-3.9	-0.1	-0.1	0.6	-0.1
Nov. 2014 to 2015.....	-9.5	-44.3	-3.2	-6.5	-12.7	-5.8
Nov. 2015 to 2016.....	-0.1	2.7	-0.3	-0.3	-1.2	-0.3

r Revised

**Chart 3. One-month percent change in the Export Price Index: November 2015 – November 2016**



**Chart 4. 12-month percent change in the Export Price Index: November 2015 – November 2016**



**All Exports:** The price index for overall exports edged down 0.1 percent in November, after increasing 0.2 percent in October and 0.3 percent in September. In November, declining nonagricultural prices led the overall decrease. U.S. export prices also fell over the past 12 months, decreasing 0.3 percent. Export prices have not risen on a 12-month basis since the index rose 0.4 percent between August 2013 and August 2014.

**Agricultural Exports:** Agricultural prices increased for the second consecutive month in November, rising 0.6 percent following a 0.5-percent advance in October. In November, the increase was driven by an 11.5-percent rise in vegetable prices. Despite the recent advances, the price index for agricultural exports fell 1.2 percent for the year ended in November. Lower prices for nuts, corn, and wheat all contributed to the drop in agricultural prices over the past year.

**All Exports Excluding Agriculture:** Prices for nonagricultural exports declined 0.1 percent in November following a 0.2-percent advance the previous month. In November, decreasing prices for nonagricultural industrial supplies and materials, and consumer goods led the overall decline. Nonagricultural goods also fell over the past 12 months, decreasing 0.3 percent following a 5.8-percent decline for the year ended in November 2015.

## SELECTED NOVEMBER HIGHLIGHTS

### Import Prices

**Imports by Locality of Origin:** Prices for imports from China declined 0.2 percent in November, after recording no change in October. Import prices from China have not increased on a monthly basis since a 0.1-percent rise in December 2014; the index decreased 1.5 percent over the past year. In contrast, the price index for imports from Japan rose 0.2 percent for the second consecutive month in November. Prices for imports from Japan have not decreased on a monthly basis since the index edged down 0.1 percent in January; import prices from Japan advanced 1.3 percent over the past 12 months. The indexes for imports from Canada, the European Union, and Mexico all fell in November, led in part by lower fuel prices. Import prices from Canada declined 0.8 percent and prices for imports from the European Union and Mexico each decreased 0.1 percent.

**Nonfuel Industrial Supplies and Materials:** Nonfuel industrial supplies and materials prices edged down 0.1 percent in November following a 0.6-percent decline in October. The November decrease was driven by a 5.1-percent decline in other agricultural products prices and a 2.1-percent drop in prices for iron and steel mill products.

**Finished Goods:** Each of the major finished goods price indexes fell in November. Capital goods prices declined for the second consecutive month in November led by a 0.4-percent decrease in the price index for computers, peripherals, and semiconductors. Prices for consumer goods and automotive vehicles each fell 0.1 percent in November.

**Foods, Feeds, and Beverages:** Foods, feeds, and beverages prices rose 1.5 percent in November. A 5.5-percent advance in fruit prices was the largest contributor to the overall increase.

**Transportation Services:** Import air passenger fares declined 2.7 percent in November following a 6.3-percent advance the previous month. In November, the downturn was led by a 5.0-percent drop in Asian fares and a 1.2-percent decrease in European fares. The index for import air passenger fares also decreased over the past year, falling 6.0 percent. Import air freight prices declined 0.4 percent in November and 1.3 percent over the past 12 months.

### Export Prices

**Nonagricultural Industrial Supplies and Materials:** The price index for nonagricultural industrial supplies and materials fell 0.4 percent in November following a 1.0-percent increase in October. The decrease in November was led by a 2.7-percent decline in fuel prices.

**Finished Goods:** Export consumer goods prices fell 0.2 percent in November, after a 0.5-percent decrease the previous month. The November decline was driven by lower prices for medical, dental, and pharmaceutical materials. The price indexes for capital goods and automotive vehicles each recorded no change in November.

**Transportation Services:** Export air passenger fares declined 0.6 percent in November as a 1.2-percent decrease in Latin American/Caribbean fares and a 0.5-percent drop in Asian fares more than offset a 1.9-percent advance in European fares. Export air passenger fares declined 3.2 percent for the year ended in November. The price index for export air freight declined 0.1 percent in November and 1.4 percent over the past year.

---

**Import and Export Price Index data for December 2016 are scheduled for release on Thursday, January 12, 2017 at 8:30 a.m. (EST).**

**Table 1. U.S. import price indexes and percent changes for selected categories of goods: November 2015 to November 2016**

[2000=100, unless otherwise noted]

Description	End Use	Relative importance Oct. 2016 <sup>1</sup>	Index		Percent change				
			Oct. 2016	Nov. 2016	Annual Nov. 2015 to Nov. 2016	Monthly			
						July 2016 to Aug. 2016	Aug. 2016 to Sept. 2016	Sept. 2016 to Oct. 2016	Oct. 2016 to Nov. 2016
<b>All commodities</b> .....		100.000	121.1	120.7	-0.1	-0.2	0.1	0.4	-0.3
<b>All imports excluding food and fuels (Dec. 2010=100)</b> .....		84.952	98.1	98.0	-0.6	0.0	-0.1	-0.1	-0.1
<b>All imports excluding petroleum</b> .....		91.910	111.0	111.0	-0.2	0.1	0.0	-0.1	0.0
<b>All imports excluding fuels (Dec. 2001=100)</b> .....		91.266	115.1	115.0	-0.3	0.0	0.0	-0.1	-0.1
<b>Foods, feeds, &amp; beverages</b> .....	0	6.314	179.6	182.3	5.6	1.4	0.4	-0.7	1.5
Agricultural foods, feeds & beverages, excluding distilled beverages.....	00	4.890	196.8	200.5	5.1	1.7	0.4	-1.0	1.9
Nonagricultural foods (fish, distilled beverages).....	01	1.424	140.7	141.0	7.1	0.0	0.9	0.5	0.2
<b>Industrial supplies &amp; materials</b> .....	1	22.134	159.8	157.3	1.0	-1.2	-0.2	2.2	-1.6
Industrial supplies & materials excluding petroleum.....		14.044	141.0	141.4	0.7	0.5	-0.6	-0.4	0.3
Industrial supplies & materials excluding fuels (Dec. 2001=100).....		13.400	160.0	159.9	0.4	0.3	-0.7	-0.6	-0.1
Industrial supplies & materials, durable....		8.164	149.4	149.5	2.4	0.7	-0.9	-1.2	0.1
Industrial supplies & materials nondurable excluding petroleum.....		5.236	130.5	131.2	-1.6	0.2	-0.2	0.7	0.5
Fuels & lubricants.....	10	8.734	161.0	154.8	2.7	-3.4	0.5	6.9	-3.9
Petroleum & petroleum products.....	100	8.090	173.6	165.4	2.4	-4.1	0.6	7.3	-4.7
Crude.....	10000	5.847	175.8	163.9	2.6	-4.0	-0.4	6.8	-6.8
Fuels, n.e.s.-coals & gas.....	101	0.476	94.8	103.4	9.5	8.0	0.4	5.7	9.1
Gas-natural.....	10110	0.386	79.5	87.9	13.6	10.3	0.5	7.3	10.6
Paper & paper base stocks.....	11	0.561	105.0	104.4	-4.6	0.1	-1.1	-0.8	-0.6
Materials associated with nondurable supplies & materials.....	12	4.741	149.6	149.2	-2.4	-0.5	-0.1	0.4	-0.3
Selected building materials.....	13	1.297	137.3	136.4	1.3	0.2	-0.3	-0.1	-0.7
Unfinished metals related to durable goods.....	14	3.444	195.8	197.0	7.2	1.5	-1.7	-2.1	0.6
Finished metals related to durable goods.....	15	1.659	143.5	143.8	-2.1	0.3	-0.8	-1.3	0.2
Nonmetals related to durable goods.....	16	1.698	107.8	107.3	-1.3	-0.2	0.3	-0.2	-0.5
<b>Capital goods</b> .....	2	28.306	88.8	88.6	-1.6	0.0	0.1	-0.2	-0.2
Electric generating equipment.....	20	3.441	115.8	115.9	-0.9	0.1	0.0	-0.1	0.1
Nonelectrical machinery.....	21	22.178	81.3	81.1	-1.7	0.0	0.1	-0.2	-0.2
Transportation equipment excluding motor vehicles (Dec. 2001=100).....	22	2.687	136.3	136.3	-0.5	-0.1	-0.1	0.0	0.0
<b>Automotive vehicles, parts &amp; engines</b> .....	3	16.079	110.7	110.6	0.0	-0.1	0.1	0.3	-0.1
<b>Consumer goods, excluding automobiles</b> .....	4	27.167	106.7	106.6	-0.6	-0.2	0.0	0.1	-0.1
Nondurables, manufactured.....	40	12.947	119.2	119.2	0.0	-0.2	-0.1	-0.1	0.0
Durables, manufactured.....	41	12.737	94.2	94.1	-1.3	-0.2	0.0	0.2	-0.1
Nonmanufactured consumer goods.....	42	1.484	118.6	118.4	-0.1	-0.3	0.4	0.1	-0.2

<sup>1</sup> Relative importance figures are based on 2014 trade values.

NOTES: Data may be revised in each of the 3 months after original publication.

Dash = Not available

**Table 2. U.S. export price indexes and percent changes for selected categories of goods: November 2015 to November 2016**

[2000=100, unless otherwise noted]

Description	End Use	Relative importance Oct. 2016 <sup>1</sup>	Index		Percent change				
			Oct. 2016	Nov. 2016	Annual	Monthly			
					Nov. 2015 to Nov. 2016	July 2016 to Aug. 2016	Aug. 2016 to Sept. 2016	Sept. 2016 to Oct. 2016	Oct. 2016 to Nov. 2016
<b>All commodities.....</b>		100.000	120.8	120.7	-0.3	-0.8	0.3	0.2	-0.1
<b>Agricultural commodities.....</b>		8.954	174.1	175.1	-1.2	-3.4	-1.1	0.5	0.6
<b>All exports excluding food and fuels (Dec. 2010=100).....</b>		84.277	98.2	98.3	-0.4	-0.2	0.0	-0.2	0.1
<b>Nonagricultural commodities.....</b>		91.045	116.7	116.6	-0.3	-0.6	0.5	0.2	-0.1
<b>Foods, feeds, &amp; beverages.....</b>	0	8.384	175.7	177.0	-1.3	-3.7	-0.8	0.4	0.7
Agricultural foods, feeds & beverages, excluding distilled beverages.....	00	7.679	174.9	176.4	-1.7	-4.0	-1.2	0.5	0.9
Nonagricultural foods (fish, distilled beverages).....	01	0.705	193.3	191.7	4.0	0.6	2.9	0.2	-0.8
<b>Industrial supplies &amp; materials.....</b>	1	29.310	143.3	142.8	0.8	-1.3	1.3	1.0	-0.3
Industrial supplies & materials, durable....		10.633	153.5	154.5	2.7	0.2	0.0	-0.8	0.7
Industrial supplies & materials, nondurable.....		18.677	138.6	137.3	-0.3	-2.1	2.0	2.1	-0.9
Agricultural industrial supplies & materials.....	10	1.275	174.2	172.0	1.7	0.3	-0.3	0.8	-1.3
<b>Nonagricultural industrial supplies &amp; materials.....</b>		28.035	142.3	141.8	0.8	-1.3	1.4	1.0	-0.4
Fuels & lubricants.....	11	7.338	156.5	152.2	1.3	-5.0	5.9	5.5	-2.7
Nonagricultural supplies & materials excluding fuels & building materials.....	12	19.651	148.6	149.4	0.3	-0.2	-0.1	-0.5	0.5
Selected building materials.....	13	1.046	116.9	117.3	3.1	0.3	0.9	0.0	0.3
<b>Capital goods.....</b>	2	38.819	106.8	106.8	-0.3	-0.1	0.0	0.0	0.0
Electrical generating equipment.....	20	3.943	111.9	111.8	-0.9	-0.2	-0.3	-0.1	-0.1
Nonelectrical machinery.....	21	26.136	93.8	93.9	-0.8	-0.2	0.0	0.0	0.1
Transportation equipment excluding motor vehicles (Dec. 2001=100).....	22	8.741	165.0	164.9	1.8	0.1	0.1	0.1	-0.1
<b>Automotive vehicles, parts &amp; engines.....</b>	3	10.672	112.9	112.9	-0.6	-0.5	0.1	0.2	0.0
<b>Consumer goods, excluding automotives.....</b>	4	12.814	110.0	109.8	-1.9	-0.2	0.2	-0.5	-0.2
Nondurables, manufactured.....	40	5.842	106.2	105.9	-1.7	-0.5	0.2	-0.5	-0.3
Durables, manufactured.....	41	5.349	107.2	107.1	-2.5	0.1	0.1	-0.7	-0.1

<sup>1</sup> Relative importance figures are based on 2014 trade values.

NOTES: Data may be revised in each of the 3 months after original publication.

Dash = Not available

**Table 3. U.S. import price indexes and percent changes for selected categories of goods: November 2015 to November 2016**

[December 2005=100, unless otherwise noted]

Description	NAICS	Relative importance Oct. 2016 <sup>1</sup>	Index		Percent change				
			Oct. 2016	Nov. 2016	Annual	Monthly			
					Nov. 2015 to Nov. 2016	July 2016 to Aug. 2016	Aug. 2016 to Sept. 2016	Sept. 2016 to Oct. 2016	Oct. 2016 to Nov. 2016
<b>Nonmanufacturing.....</b>		8.643	89.7	86.6	4.2	-1.4	0.1	4.7	-3.5
<b>Agriculture, forestry, fishing and hunting.....</b>	11	2.100	182.5	187.6	7.8	4.7	1.5	-1.9	2.8
Crop production.....	111	1.733	200.0	206.8	10.9	5.9	2.2	-2.1	3.4
Animal production (Dec. 2014=100).....	112	0.187	72.2	70.8	-12.9	1.2	-4.2	-4.7	-1.9
<b>Mining.....</b>	21	6.543	78.5	74.3	3.3	-3.3	-0.3	6.8	-5.4
Mining (except oil and gas) (Dec. 2006=100).....	212	0.239	95.6	95.7	-1.9	0.0	0.7	0.3	0.1
<b>Manufacturing.....</b>		91.055	109.0	108.9	-0.5	-0.2	0.0	0.1	-0.1
<b>Manufacturing, part 1.....</b>	31	12.144	123.8	123.9	0.6	-0.2	0.2	0.0	0.1
Food manufacturing.....	311	3.500	153.7	154.5	3.9	-0.6	0.3	0.0	0.5
Beverage and tobacco product manufacturing.....	312	1.089	118.3	118.0	-0.1	-0.1	0.2	0.3	-0.3
Textile mills (Dec. 2011=100).....	313	0.400	97.7	97.7	-2.0	-1.2	0.1	-0.1	0.0
Textile product mills.....	314	0.894	109.1	109.2	-1.5	0.2	0.1	0.1	0.1
Apparel manufacturing.....	315	4.350	111.2	111.2	-0.3	0.0	0.0	0.0	0.0
Leather and allied product manufacturing.....	316	1.911	123.0	123.0	-1.2	-0.1	-0.1	0.0	0.0
<b>Manufacturing, part 2.....</b>	32	16.785	116.1	116.2	-0.8	-0.9	0.1	0.9	0.1
Wood product manufacturing.....	321	0.788	115.7	114.7	3.0	0.4	-0.5	0.0	-0.9
Paper manufacturing.....	322	1.058	104.0	103.8	-2.6	0.0	-0.8	-0.5	-0.2
Petroleum and coal products manufacturing.....	324	2.090	78.8	79.2	0.3	-4.3	3.4	7.8	0.5
Chemical manufacturing.....	325	9.357	129.9	130.2	-0.8	-0.7	-0.2	0.1	0.2
Plastics and rubber products manufacturing.....	326	2.264	117.1	117.2	-1.2	0.0	-0.1	-0.4	0.1
Nonmetallic mineral product manufacturing.....	327	1.028	129.4	129.3	-0.8	-0.1	0.1	0.0	-0.1
<b>Manufacturing, part 3.....</b>	33	62.126	103.4	103.2	-0.7	0.0	0.0	-0.1	-0.2
Primary metal manufacturing.....	331	4.190	129.8	130.2	4.5	1.6	-1.9	-1.7	0.3
Fabricated metal product manufacturing.....	332	3.081	121.6	121.5	-2.3	0.0	0.0	-0.4	-0.1
Machinery manufacturing.....	333	7.677	116.4	116.2	-1.7	-0.2	0.2	-0.1	-0.2
Computer and electronic product manufacturing.....	334	17.907	76.2	76.0	-1.8	-0.3	0.1	-0.1	-0.3
Electrical equipment, appliance, and component manufacturing.....	335	4.833	115.0	114.9	-1.5	0.1	0.1	0.4	-0.1
Transportation equipment manufacturing.....	336	17.289	109.9	109.8	0.0	0.0	0.1	0.3	-0.1
Furniture and related product manufacturing.....	337	1.656	114.9	114.8	-0.6	-0.3	0.0	0.0	-0.1
Miscellaneous manufacturing.....	339	5.493	119.3	119.1	0.0	0.0	-0.2	-0.4	-0.2

<sup>1</sup> Relative importance figures are based on 2014 trade values.

NOTES: Data may be revised in each of the 3 months after original publication.

Dash = Not available

**Table 4. U.S. export price indexes and percent changes for selected categories of goods: November 2015 to November 2016**

[December 2005=100, unless otherwise noted]

Description	NAICS	Relative importance Oct. 2016 <sup>1</sup>	Index		Percent change				
			Oct. 2016	Nov. 2016	Annual	Monthly			
					Nov. 2015 to Nov. 2016	July 2016 to Aug. 2016	Aug. 2016 to Sept. 2016	Sept. 2016 to Oct. 2016	Oct. 2016 to Nov. 2016
<b>Nonmanufacturing.....</b>		6.950	122.9	121.1	0.6	-4.3	0.1	0.6	-1.5
<b>Agriculture, forestry, fishing and hunting.....</b>	11	4.527	150.7	152.5	-2.2	-5.7	-0.9	1.1	1.2
Crop production.....	111	4.168	156.7	158.8	-1.8	-6.1	-1.5	1.2	1.3
<b>Mining.....</b>	21	2.423	69.3	64.9	6.7	-1.6	2.1	-0.3	-6.3
Mining (except oil and gas).....	212	1.216	83.9	87.7	11.4	2.5	1.3	4.4	4.5
<b>Manufacturing.....</b>		91.730	111.6	111.4	-0.4	-0.4	0.3	0.3	-0.2
<b>Manufacturing, part 1.....</b>	31	6.751	135.1	134.7	0.2	-0.1	-0.4	-0.3	-0.3
Food manufacturing.....	311	4.535	151.8	152.0	0.7	-0.5	-0.5	-0.3	0.1
Beverage and tobacco product manufacturing.....	312	0.640	112.0	108.0	1.5	1.6	-0.7	-0.8	-3.6
<b>Manufacturing, part 2.....</b>	32	23.445	107.2	106.5	-1.1	-1.5	1.4	1.4	-0.7
Paper manufacturing.....	322	1.696	118.8	117.9	-3.8	0.1	-0.2	-1.2	-0.8
Printing and related support activities (Dec. 2015=100).....	323	0.268	100.0	100.0	-	0.0	0.0	0.0	0.0
Petroleum and coal products manufacturing.....	324	4.851	92.8	89.4	1.7	-5.5	7.5	8.3	-3.7
Chemical manufacturing.....	325	12.888	113.8	114.2	-1.5	-0.9	0.0	0.0	0.4
Plastics and rubber products manufacturing.....	326	2.349	113.9	114.0	-2.3	-0.2	0.1	-0.3	0.1
Nonmetallic mineral product manufacturing.....	327	0.863	112.6	112.7	0.1	0.4	0.2	-0.3	0.1
<b>Manufacturing, part 3.....</b>	33	61.534	111.0	111.1	-0.3	-0.2	0.0	-0.2	0.1
Primary metal manufacturing.....	331	4.271	135.2	136.1	3.7	0.1	-0.4	-1.8	0.7
Fabricated metal product manufacturing... ..	332	3.291	130.4	130.3	0.3	0.2	0.0	-0.1	-0.1
Machinery manufacturing.....	333	11.581	126.1	125.9	0.6	-0.1	0.0	0.1	-0.2
Computer and electronic product manufacturing.....	334	14.276	82.9	83.1	-2.2	-0.2	-0.1	-0.4	0.2
Electrical equipment, appliance, and component manufacturing.....	335	3.812	112.0	112.0	-0.9	-0.3	0.0	-0.1	0.0
Transportation equipment manufacturing..	336	18.313	122.3	122.3	0.5	-0.2	0.1	0.2	0.0
Furniture and related product manufacturing (Dec. 2011=100).....	337	0.417	118.0	117.9	7.1	0.9	0.2	0.1	-0.1
Miscellaneous manufacturing.....	339	5.572	119.6	119.6	-2.3	0.1	0.1	-0.1	0.0

<sup>1</sup> Relative importance figures are based on 2014 trade values.

NOTES: Data may be revised in each of the 3 months after original publication.

Dash = Not available



**Table 5. U.S. import price indexes and percent changes for selected categories of goods: November 2015 to November 2016**

[2000=100, unless otherwise noted]

Description	Harmoni- zied system	Relative importance Oct. 2016 <sup>1</sup>	Index		Percent change				
			Oct. 2016	Nov. 2016	Annual	Monthly			
					Nov. 2015 to Nov. 2016	July 2016 to Aug. 2016	Aug. 2016 to Sept. 2016	Sept. 2016 to Oct. 2016	Oct. 2016 to Nov. 2016
<b>Live animals; animal products.....</b>	I	1.469	189.0	189.4	5.2	0.5	-0.2	-0.8	0.2
Meat and edible meat offal.....	02	0.384	236.6	241.0	6.3	1.3	-0.4	-0.8	1.9
Fish and crustaceans, molluscs and other aquatic invertebrates.....	03	0.798	144.7	145.1	13.1	0.5	1.3	0.4	0.3
<b>Vegetable products.....</b>	II	2.228	221.9	229.0	13.0	6.6	3.1	-1.0	3.2
Edible vegetables, roots, and tubers.....	07	0.570	503.3	497.7	-0.2	5.3	21.5	-4.3	-1.1
Edible fruit and nuts; peel of citrus fruit or melons.....	08	0.796	127.3	137.3	44.5	18.5	-4.0	0.1	7.9
Coffee, tea, mate and spices.....	09	0.382	234.6	243.6	7.5	-0.3	0.8	-0.6	3.8
Oilseeds & misc grains, seeds, plants, straw & fodder (Dec. 2015=100).....	12	0.162	97.1	99.1	-	-2.9	-7.9	2.1	2.1
<b>Animal or vegetable fats and oils (Dec. 2009=100).....</b>	III	0.287	109.9	113.8	11.0	0.4	3.3	-0.8	3.5
<b>Prepared foodstuffs, beverages, and tobacco.....</b>	IV	2.773	160.7	160.3	0.4	-1.6	-0.1	-0.1	-0.2
Sugars and sugar confectionary (Dec. 2012=100).....	17	0.193	87.2	87.9	2.9	0.5	-0.2	0.5	0.8
Cocoa and cocoa preparations (Dec. 2009=100).....	18	0.238	111.1	106.5	-8.1	-2.0	1.4	-3.0	-4.1
Preparations of cereals, flour, starch or milk; bakers' wares (Dec. 2007=100).....	19	0.285	132.9	132.7	0.5	-0.1	-0.1	0.0	-0.2
Preparations of vegetables, fruit, nuts, or other parts of plants.....	20	0.335	161.3	161.0	4.3	-0.2	0.9	1.1	-0.2
Beverages, spirits, and vinegar.....	22	1.025	128.1	127.9	-0.1	0.0	0.1	0.2	-0.2
<b>Mineral products.....</b>	V	8.763	160.3	154.2	2.0	-3.4	0.5	6.9	-3.8
Mineral fuels, oils and residuals, bituminous substances and mineral waxes.....	27	8.522	158.0	151.9	2.4	-3.5	0.4	7.1	-3.9
<b>Products of the chemical or allied industries.....</b>	VI	8.754	145.6	145.6	-0.5	-0.4	-0.2	-0.3	0.0
Inorganic chemicals.....	28	0.533	249.3	249.4	-12.2	0.0	-1.2	-2.0	0.0
Organic chemicals.....	29	2.376	120.7	120.4	-0.6	0.2	0.4	-0.5	-0.2
Pharmaceutical products.....	30	3.796	140.5	140.4	1.4	-0.6	-0.3	-0.1	-0.1
Fertilizers (Dec. 2009=100).....	31	0.258	70.2	73.5	-19.8	-8.3	-4.0	-0.4	4.7
Tanning extracts; dye, pigments, varnish, paints & putty (Dec. 2011=100).....	32	0.197	102.6	102.4	4.5	0.1	0.3	1.0	-0.2
Miscellaneous chemical products.....	38	0.667	101.9	102.1	13.6	0.2	0.3	-0.1	0.2
<b>Plastics and articles thereof; rubber and articles thereof.....</b>	VII	3.502	137.3	137.1	-0.9	-0.1	0.0	0.3	-0.1
Plastics and articles thereof.....	39	2.239	140.3	139.8	-1.7	-0.1	0.1	0.1	-0.4
Rubber and articles thereof.....	40	1.263	133.4	133.8	0.7	-0.2	-0.2	0.6	0.3
<b>Raw hides, skins, leather, furskins, travel goods, etc.....</b>	VIII	0.702	123.3	123.4	-2.8	-0.2	0.0	0.0	0.1
Articles of leather; travel goods, bags, etc. of various materials.....	42	0.669	128.7	128.7	-1.0	-0.2	-0.1	0.1	0.0
<b>Wood, wood charcoal, cork, straw, basketware and wickerwork.....</b>	IX	0.824	140.9	139.7	2.8	0.4	-0.4	-0.1	-0.9
Wood and articles of wood; wood charcoal (Dec. 2014=100).....	44	0.785	96.9	95.9	2.9	0.4	-0.4	0.0	-1.0
<b>Woodpulp, recovered paper, and paper products.....</b>	X	1.135	108.5	107.8	-2.9	0.0	-0.5	-0.5	-0.6
Paper and paperboard; articles of paper pulp, paper or paperboard.....	48	0.772	103.5	103.6	-1.2	0.0	-0.3	-0.8	0.1

See footnotes at end of table.

**Table 5. U.S. import price indexes and percent changes for selected categories of goods: November 2015 to November 2016 — Continued**  
 [2000=100, unless otherwise noted]

Description	Harmonized system	Relative importance Oct. 2016 <sup>1</sup>	Index		Percent change				
			Oct. 2016	Nov. 2016	Annual	Monthly			
					Nov. 2015 to Nov. 2016	July 2016 to Aug. 2016	Aug. 2016 to Sept. 2016	Sept. 2016 to Oct. 2016	Oct. 2016 to Nov. 2016
Printed matter (Dec. 2015=100).....	49	0.211	100.7	98.9	-	0.0	0.3	-0.2	-1.8
<b>Textile and textile articles.....</b>	<b>XI</b>	<b>5.463</b>	<b>113.2</b>	<b>113.2</b>	<b>-0.6</b>	<b>0.0</b>	<b>0.1</b>	<b>-0.1</b>	<b>0.0</b>
Articles of apparel and clothing accessories, knitted or crocheted.....	61	2.267	103.7	103.8	-0.2	0.1	0.2	0.0	0.1
Articles of apparel and clothing accessories, not knitted or crocheted.....	62	1.888	119.2	119.1	-0.4	0.0	-0.1	-0.3	-0.1
Made-up or worn textile articles.....	63	0.635	103.3	103.5	-1.4	0.5	0.1	-0.1	0.2
<b>Headgear, umbrellas, artificial flowers, etc.....</b>	<b>XII</b>	<b>1.521</b>	<b>122.4</b>	<b>122.3</b>	<b>-1.0</b>	<b>-0.1</b>	<b>-0.1</b>	<b>0.0</b>	<b>-0.1</b>
Footwear and parts of such articles.....	64	1.298	121.5	121.4	-1.1	-0.2	-0.1	0.0	-0.1
<b>Stone, plaster, cement, asbestos, ceramics, glass etc.....</b>	<b>XIII</b>	<b>0.954</b>	<b>130.9</b>	<b>130.8</b>	<b>-1.1</b>	<b>-0.2</b>	<b>0.0</b>	<b>-0.1</b>	<b>-0.1</b>
Articles of stone, plaster, cement, asbestos, or mica (Dec. 2015=100).....	68	0.327	97.8	97.7	-	-0.3	-0.4	0.0	-0.1
Ceramic products.....	69	0.281	137.4	137.3	-0.5	-0.1	0.4	-0.1	-0.1
Glass and glassware.....	70	0.346	129.8	129.7	-0.2	-0.2	0.2	-0.1	-0.1
<b>Pearls, stones, precious metals, imitation jewelry, and coins.....</b>	<b>XIV</b>	<b>3.104</b>	<b>172.7</b>	<b>172.8</b>	<b>5.6</b>	<b>1.1</b>	<b>-1.3</b>	<b>-2.3</b>	<b>0.1</b>
<b>Base metals and articles of base metals. ...</b>	<b>XV</b>	<b>5.412</b>	<b>155.1</b>	<b>155.8</b>	<b>-0.5</b>	<b>0.4</b>	<b>-0.6</b>	<b>-0.8</b>	<b>0.5</b>
Iron and steel.....	72	1.313	167.7	167.7	4.6	0.7	-1.4	-2.6	0.0
Articles of iron or steel.....	73	1.688	136.3	136.1	-5.0	0.0	-0.6	-0.7	-0.1
Copper and articles thereof.....	74	0.355	239.2	248.2	-3.6	0.0	0.1	-1.1	3.8
Aluminum and articles thereof.....	76	0.719	120.5	121.4	-0.7	-0.2	-1.0	0.8	0.7
Tools, implements, cutlery, spoons and forks, of base metal; parts thereof.....	82	0.443	122.3	122.0	-3.3	0.0	0.1	-0.1	-0.2
Miscellaneous articles of base metal.....	83	0.525	136.5	136.4	-1.1	-0.1	0.0	0.0	-0.1
<b>Machinery, electrical equipment, TV image and sound recorders, parts, etc.....</b>	<b>XVI</b>	<b>30.479</b>	<b>80.7</b>	<b>80.5</b>	<b>-1.7</b>	<b>-0.2</b>	<b>0.1</b>	<b>0.0</b>	<b>-0.2</b>
Machinery and mechanical appliances; parts thereof.....	84	15.452	85.6	85.3	-2.0	-0.3	0.2	-0.2	-0.4
Electrical machinery and equip, sound and TV recorders & reproducers, parts.....	85	15.027	76.1	76.0	-1.3	-0.1	0.0	0.4	-0.1
<b>Vehicles, aircraft, vessels and associated transport equipment.....</b>	<b>XVII</b>	<b>14.365</b>	<b>114.3</b>	<b>114.2</b>	<b>-0.1</b>	<b>0.0</b>	<b>0.0</b>	<b>0.4</b>	<b>-0.1</b>
Motor vehicles and their parts.....	87	12.876	113.0	112.8	-0.1	0.0	0.1	0.4	-0.2
Aircraft, spacecraft, and parts thereof (Dec. 2002=100).....	88	1.413	118.9	118.9	-0.7	-0.1	0.0	0.1	0.0
<b>Optical, photo, measuring, medical &amp; musical instruments; &amp; timepieces.....</b>	<b>XVIII</b>	<b>4.003</b>	<b>103.2</b>	<b>102.9</b>	<b>-0.2</b>	<b>0.3</b>	<b>0.0</b>	<b>-0.3</b>	<b>-0.3</b>
Optical, photographic, measuring and medical instruments.....	90	3.672	100.0	99.7	-0.3	0.3	0.0	-0.3	-0.3
Clocks and watches and parts thereof.....	91	0.267	142.2	141.5	0.4	-0.1	0.6	-0.1	-0.5
<b>Miscellaneous manufactured articles.....</b>	<b>XX</b>	<b>4.175</b>	<b>111.7</b>	<b>111.7</b>	<b>-0.6</b>	<b>-0.1</b>	<b>-0.1</b>	<b>-0.1</b>	<b>0.0</b>
Furniture & stuffed furnishings; lamps & lighting fittings, nesoi; prefab bldgs.....	94	2.560	116.6	116.5	-0.5	-0.2	0.1	0.1	-0.1
Toys, games and sports equipment; parts and accessories thereof.....	95	1.343	103.3	103.2	-0.6	0.0	-0.1	0.0	-0.1
Miscellaneous manufactured articles.....	96	0.272	131.8	131.8	-1.6	-0.2	-0.6	-1.7	0.0

<sup>1</sup> Relative importance figures are based on 2014 trade values.

NOTES: Data may be revised in each of the 3 months after original publication.

Dash = Not available

**Table 6. U.S. export price indexes and percent changes for selected categories of goods: November 2015 to November 2016**

[2000=100, unless otherwise noted]

Description	Harmoni- zied system	Relative importance Oct. 2016 <sup>1</sup>	Index		Percent change				
			Oct. 2016	Nov. 2016	Annual	Monthly			
					Nov. 2015 to Nov. 2016	July 2016 to Aug. 2016	Aug. 2016 to Sept. 2016	Sept. 2016 to Oct. 2016	Oct. 2016 to Nov. 2016
<b>Live animals; animal products.....</b>	I	1.780	192.0	192.3	3.9	-0.2	1.5	0.4	0.2
Meat & edible meat offal (Dec. 2006=100)...	02	1.021	146.9	147.9	4.9	-1.3	-0.9	0.3	0.7
<b>Vegetable products.....</b>	II	4.215	190.2	194.2	-2.9	-6.7	-1.7	1.3	2.1
Edible fruit and nuts; peel of citrus fruit or melons.....	08	0.915	152.0	152.6	-12.9	-6.7	-2.1	7.0	0.4
Cereals.....	10	1.188	168.9	170.9	-11.6	-2.9	-3.7	2.8	1.2
Oilseeds and misc. grains, seeds, fruits, plants, straw and fodder.....	12	1.609	199.1	199.1	5.8	-8.2	-2.0	-2.8	0.0
<b>Prepared foodstuffs, beverages, and tobacco.....</b>	IV	2.944	148.1	147.0	-1.4	-0.1	-1.1	-0.6	-0.7
Preparations of vegetables, fruit, nuts or other parts of plants (Dec. 2009=100)....	20	0.370	116.5	116.6	-1.4	0.1	0.0	-0.9	0.1
Beverages, spirits, and vinegar (Dec. 2008=100).....	22	0.550	111.5	111.8	4.0	-1.6	0.4	0.8	0.3
Residues and waste from the food industries; prepared animal feed.....	23	0.673	204.0	196.7	-1.8	0.0	-3.9	-1.4	-3.6
<b>Mineral products.....</b>	V	7.314	180.2	176.3	3.8	-3.9	6.0	4.8	-2.2
Ores, slag and ash (Dec. 2012=100).....	26	0.516	81.6	81.5	13.0	1.3	3.4	0.5	-0.1
Mineral fuels, oils and residuals, bituminous substances and mineral waxes.....	27	6.597	172.6	168.5	3.2	-4.3	6.4	5.3	-2.4
<b>Products of the chemical or allied industries.....</b>	VI	10.715	135.9	136.1	-2.4	-0.6	0.0	-0.1	0.1
Inorganic chemicals.....	28	0.917	175.1	176.5	-3.6	-0.4	-0.9	1.3	0.8
Organic chemicals.....	29	2.459	133.0	134.4	-1.1	-0.5	0.2	0.4	1.1
Pharmaceutical products.....	30	2.955	108.7	108.1	-2.0	-0.7	0.4	-0.2	-0.6
Tanning or dyeing extracts, dyes, paints varnish, putty, & inks (Dec. 2015=100)....	32	0.537	97.5	97.5	-	-0.3	-0.2	-0.2	0.0
Essential oils and resinoids; perfumery cosmetic or toilet preparations.....	33	0.809	131.1	131.1	-3.2	0.1	0.0	-2.6	0.0
Soap; lubricants; waxes, polishing or scouring products; candles, pastes.....	34	0.515	116.3	115.7	2.7	0.0	0.1	0.4	-0.5
Miscellaneous chemical products.....	38	1.837	146.0	146.7	-2.2	-0.9	-0.3	-0.3	0.5
<b>Plastics and articles thereof; rubber and articles thereof.....</b>	VII	5.093	136.7	137.5	0.3	-0.7	0.3	0.1	0.6
Plastics and articles thereof.....	39	4.115	132.2	132.8	0.2	-0.8	0.2	0.2	0.5
Rubber and articles thereof.....	40	0.978	155.6	157.5	0.9	0.0	0.6	-0.4	1.2
<b>Raw hides, skins, leather, furskins, travel goods, etc.....</b>	VIII	0.330	120.4	121.1	0.4	-0.3	0.7	0.3	0.6
Raw hides and skins other than furskins and leather (Dec.2014=100).....	41	0.181	69.5	70.5	1.9	-1.3	0.3	0.7	1.4
<b>Wood, wood charcoal, cork, straw, baskets and wickerwork (Dec. 2014=100).....</b>	IX	0.651	95.7	95.7	0.2	0.5	1.2	-1.0	0.0
<b>Woodpulp, recovered paper, and paper products.....</b>	X	2.141	122.6	123.0	0.3	1.3	-0.9	-0.2	0.3
Woodpulp and recovered paper.....	47	0.640	129.3	130.8	6.4	5.1	-3.0	-0.5	1.2
Paper and paperboard; articles of paper pulp, paper or paperboard.....	48	1.120	118.6	118.5	-3.3	-0.3	0.1	-0.3	-0.1
Printed material (Dec. 2014=100).....	49	0.381	100.6	100.6	1.4	0.0	0.0	0.2	0.0
<b>Textile and textile articles.....</b>	XI	1.707	119.6	119.4	-0.6	-0.7	0.2	-0.3	-0.2
Cotton, including yarns and woven fabrics thereof.....	52	0.410	122.3	122.5	5.5	-2.9	0.7	0.2	0.2

See footnotes at end of table.

**Table 6. U.S. export price indexes and percent changes for selected categories of goods: November 2015 to November 2016 — Continued**  
 [2000=100, unless otherwise noted]

Description	Harmoni- zied system	Relative importance Oct. 2016 <sup>1</sup>	Index		Percent change				
			Oct. 2016	Nov. 2016	Annual	Monthly			
					Nov. 2015 to Nov. 2016	July 2016 to Aug. 2016	Aug. 2016 to Sept. 2016	Sept. 2016 to Oct. 2016	Oct. 2016 to Nov. 2016
<b>Stone, plaster, cement, asbestos, ceramics, glass etc.....</b>	XIII	0.869	123.0	123.1	0.5	0.2	0.0	-0.1	0.1
Articles of stone, plaster, cement, asbestos, or mica (Dec. 2015=100).....	68	0.295	101.2	101.3	—	0.7	0.0	0.0	0.1
Glass and glassware.....	70	0.439	99.8	99.8	0.6	0.0	0.0	0.1	0.0
<b>Pearls, stones, precious metals, imitation jewelry, and coins.....</b>	XIV	4.460	235.4	235.9	5.5	0.3	-0.3	-2.1	0.2
<b>Base metals and articles of base metals. ...</b>	XV	4.933	142.5	144.0	0.2	0.1	-0.3	-0.2	1.1
Iron and steel.....	72	0.995	140.7	143.6	1.4	1.9	-0.4	-1.4	2.1
Copper and articles thereof.....	74	0.424	152.5	155.9	-3.3	-0.1	-3.0	1.9	2.2
Aluminum and articles thereof.....	76	0.765	103.1	106.3	2.6	-1.5	0.0	-0.1	3.1
Tools, implements, cutlery, spoons and forks, of base metal (Dec. 2015=100). ....	82	0.392	100.0	100.0	—	-0.1	0.0	0.0	0.0
Miscellaneous articles of base metal.....	83	0.355	147.8	147.8	-0.5	0.0	0.1	0.0	0.0
<b>Machinery, electrical equipment, TV image and sound recorders, parts, etc.....</b>	XVI	29.563	95.3	95.4	-1.0	-0.2	0.0	-0.2	0.1
Machinery and mechanical appliances; parts thereof.....	84	17.703	112.3	112.3	-0.6	-0.2	-0.1	0.0	0.0
Electrical machinery and equipment and parts and accessories thereof.....	85	11.860	76.9	77.1	-1.7	-0.1	-0.1	-0.4	0.3
<b>Vehicles, aircraft, vessels and associated transport equipment.....</b>	XVII	15.181	131.9	131.8	0.6	-0.2	0.1	0.3	-0.1
Motor vehicles and their parts.....	87	9.207	114.8	114.7	-0.2	-0.5	0.1	0.3	-0.1
<b>Optical, photo, measuring, medical &amp; musical instruments; &amp; timepieces.....</b>	XVIII	6.188	106.1	106.0	-1.2	0.0	0.0	0.1	-0.1
<b>Miscellaneous manufactured articles.....</b>	XX	1.559	112.5	112.5	1.4	0.1	0.1	0.1	0.0
Furniture; stuffed furnishings; lamps and lighting fittings nesoi;.....	94	0.940	128.6	128.5	3.7	0.5	0.2	0.1	-0.1
Toys, games and sports equipment; parts and accessories thereof.....	95	0.471	89.2	89.3	-0.6	0.0	0.0	0.0	0.1

<sup>1</sup> Relative importance figures are based on 2014 trade values.

NOTES: Data may be revised in each of the 3 months after original publication.

Dash = Not available

**Table 7. U.S. import price indexes and percent changes by locality of origin: November 2015 to November 2016**  
[2000=100, unless otherwise noted]

Description	Relative importance Oct. 2016 <sup>1</sup>	Index		Percent change				
		Oct. 2016	Nov. 2016	Annual	Monthly			
				Nov. 2015 to Nov. 2016	July 2016 to Aug. 2016	Aug. 2016 to Sept. 2016	Sept. 2016 to Oct. 2016	Oct. 2016 to Nov. 2016
<b>Industrialized Countries<sup>2</sup></b> .....	100.000	117.4	117.0	0.3	-0.4	0.0	0.4	-0.3
Nonmanufacturing.....	7.729	125.7	120.4	2.1	-2.8	-1.0	6.1	-4.2
Manufacturing.....	91.859	116.4	116.3	0.0	-0.3	0.1	0.1	-0.1
<b>Other Countries<sup>3</sup></b> .....	100.000	118.2	117.8	-0.8	-0.4	0.2	0.3	-0.3
Nonmanufacturing.....	8.950	179.3	173.7	1.7	-2.8	0.9	3.2	-3.1
Manufacturing.....	90.802	102.7	102.7	-1.0	-0.2	0.1	0.0	0.0
<b>Canada</b> .....	100.000	120.2	119.2	1.3	-1.3	-0.2	1.7	-0.8
Nonmanufacturing.....	21.986	119.9	115.1	2.3	-2.8	-1.3	6.6	-4.0
Manufacturing.....	77.316	124.3	124.4	0.8	-1.0	0.2	0.5	0.1
<b>European Union<sup>4</sup></b> .....	100.000	131.5	131.4	-0.8	-0.4	0.1	0.2	-0.1
Manufacturing.....	99.522	128.1	128.1	-0.8	-0.4	0.2	0.2	0.0
<b>France (Dec. 2003=100)</b> .....	100.000	122.4	122.3	0.8	-0.2	0.0	0.0	-0.1
<b>Germany (Dec. 2003=100)</b> .....	100.000	112.2	112.1	-4.0	-0.4	0.2	-0.6	-0.1
<b>United Kingdom (Dec. 2003=100)</b> .....	100.000	118.0	117.5	-2.4	0.1	-0.5	-0.2	-0.4
<b>Latin America<sup>5</sup></b> .....	100.000	140.2	140.1	0.0	-0.5	0.0	0.6	-0.1
Nonmanufacturing.....	17.139	204.9	201.6	5.6	-3.4	2.0	3.5	-1.6
Manufacturing.....	82.374	119.2	119.4	-1.1	0.1	-0.3	0.0	0.2
<b>Mexico (Dec. 2003=100)</b> .....	100.000	125.8	125.7	-0.9	-0.6	0.0	-0.1	-0.1
Nonmanufacturing (Dec. 2008=100).....	8.948	112.9	113.0	8.9	-6.5	0.6	-1.0	0.1
Manufacturing (Dec. 2008=100).....	90.590	88.1	88.0	-1.9	0.0	0.0	0.0	-0.1
<b>Pacific Rim (Dec. 2003=100)<sup>6</sup></b> .....	100.000	98.6	98.5	-1.0	0.0	0.1	0.0	-0.1
<b>China (Dec. 2003=100)</b> .....	100.000	100.7	100.5	-1.5	-0.2	-0.1	0.0	-0.2
<b>Japan</b> .....	100.000	96.3	96.5	1.3	0.4	0.1	0.2	0.2
<b>Asian NICs<sup>7</sup></b> .....	100.000	84.3	84.3	-1.3	0.1	0.4	-0.1	0.0
<b>ASEAN (Dec. 2003=100)<sup>8</sup></b> .....	100.000	97.1	97.1	-1.0	-0.1	0.3	0.1	0.0
<b>Asia Near East (Dec. 2003=100)<sup>9</sup></b> .....	100.000	146.1	141.1	-2.0	-0.7	-0.4	1.9	-3.4

<sup>1</sup> Relative importance figures are based on 2014 trade values.

<sup>2</sup> Western Europe, Canada, Japan, Australia, New Zealand and South Africa.

<sup>3</sup> Eastern Europe, Latin America, OPEC countries, and other countries in Asia, Africa and the Western Hemisphere.

<sup>4</sup> European Union countries.

<sup>5</sup> Mexico, Central America, South America and the Caribbean.

<sup>6</sup> China, Japan, Australia, Brunei, Indonesia, Macao, Malaysia, New Zealand, Papua New Guinea, Philippines and the Asian Newly Industrialized Countries.

<sup>7</sup> Asian Newly Industrialized Countries - Hong Kong, Singapore, South Korea and Taiwan.

<sup>8</sup> Association of Southeast Asian Nations - Brunei, Cambodia, Indonesia, Laos, Malaysia, Myanmar, Philippines, Singapore, Thailand and Vietnam.

<sup>9</sup> Bahrain, Iran, Iraq, Israel, Jordan, Kuwait, Lebanon, Oman, Qatar, Saudi Arabia, Syria, United Arab Emirates and Yemen.

NOTES: Data may be revised in each of the 3 months after original publication.

Regions are not mutually exclusive.

Dash = Not available

**Table 8. U.S. international price indexes and percent changes for selected transportation services: November 2015 to November 2016**

[2000=100, unless otherwise noted]

Description	Relative importance Oct. 2016 <sup>1</sup>	Index		Percent change				
		Oct. 2016	Nov. 2016	Annual Nov. 2015 to Nov. 2016	Monthly			
					July 2016 to Aug. 2016	Aug. 2016 to Sept. 2016	Sept. 2016 to Oct. 2016	Oct. 2016 to Nov. 2016
<b>Air Freight</b>								
<b>Import Air Freight</b> .....	100.000	165.1	164.5	-1.3	1.6	1.8	7.3	-0.4
Europe (Dec. 2003=100).....	21.790	137.2	137.6	-5.4	-1.3	0.8	0.2	0.3
Asia.....	65.333	153.4	152.5	-0.3	3.1	2.5	11.4	-0.6
<b>Export Air Freight</b> .....	100.000	154.6	154.5	-1.4	0.1	-0.3	1.0	-0.1
Europe (Dec. 2006=100).....	37.569	145.5	145.5	-2.6	0.0	0.0	0.0	0.0
<b>Inbound Air Freight</b> .....	100.000	153.9	154.2	-0.8	1.3	1.3	5.1	0.2
Europe (Dec. 2003=100).....	26.708	134.2	134.4	-2.5	-0.5	0.3	-0.3	0.1
Asia.....	59.596	141.7	142.2	0.2	2.4	2.1	9.1	0.4
<b>Outbound Air Freight</b> .....	100.000	137.1	136.4	-5.7	-0.3	0.1	0.1	-0.5
Europe (Dec. 2003=100).....	33.180	143.5	143.3	-8.7	0.4	1.0	0.0	-0.1
Asia.....	43.011	128.7	128.6	-5.1	-1.0	-0.2	0.4	-0.1
<b>Air Passenger Fares</b>								
<b>Import Air Passenger Fares</b> .....	100.000	189.0	183.9	-6.0	-6.0	4.2	6.3	-2.7
Europe.....	44.675	220.7	218.0	-6.3	-8.5	10.0	6.9	-1.2
Asia.....	21.912	131.3	124.7	-11.7	-7.2	-5.6	4.8	-5.0
Latin America/Caribbean.....	9.095	154.5	161.8	8.4	0.2	-5.7	4.2	4.7
<b>Export Air Passenger Fares</b> .....	100.000	150.0	149.1	-3.2	4.6	-11.1	2.5	-0.6
Europe.....	32.588	199.0	202.7	-4.3	-6.2	0.5	2.6	1.9
Asia.....	28.782	126.5	125.9	-5.1	22.4	-24.7	1.2	-0.5
Latin America/Caribbean.....	25.747	164.5	162.6	5.2	-1.9	-5.8	6.9	-1.2

<sup>1</sup> Relative importance figures are based on 2014 trade values.

NOTES: Data may be revised in each of the 3 months after original publication.

Dash = Not available

## TECHNICAL NOTE

**Import and Export Merchandise and Services Price Indexes** - All indexes use a modified Laspeyres formula and are not seasonally adjusted. Price indexes are reweighted annually, with a 2-year lag in the weights. Published series use a base year of 2000=100 where possible. More detailed index series and additional information may be obtained at [www.bls.gov/mxp](http://www.bls.gov/mxp) or by calling (202) 691-7101.

**Merchandise Goods Classification Systems** - The merchandise price indexes are published using three classification systems. Items are classified by end use according to the Bureau of Economic Analysis Classification System, by industry according to the North American Industry Classification System (NAICS), and by product category according to the Harmonized System (HS). While classification by end use and product category are self-explanatory, some notes are in order for classifying items by industry. In the NAICS imports and exports tables, items are classified by output industry, not input industry. As an example, NAICS import index 326 (plastics and rubber products manufacturing) include outputs such as manufactured plastic rather than inputs such as petroleum. The NAICS classification structure also matches the classification system used by the Producer Price Index (PPI) to produce the NAICS primary products indexes.

**Import Price Indexes** - Products have been classified by the Harmonized Tariff Schedule of the United States Annotated (TSUSA). Import prices are based on U.S. dollar prices paid by the U.S. importer. The prices are generally either "free on board" (f.o.b.) foreign port or "cost, insurance, and freight" (c.i.f.) U.S. port transaction prices, depending on the practices of the individual industry. The index for crude petroleum is calculated from data collected by the U.S. Department of Energy.

**Export Price Indexes** - Products have been classified by the Harmonized Schedule B classification system of the U.S. Bureau of the Census. The prices used are generally either "free alongside ship" (f.a.s.) factory or "free on board" (f.o.b.) transaction prices, depending on the practices of the individual industry. Prices used in the grain index, excluding rice, are obtained from the U.S. Department of Agriculture.

**Services Price Indexes** - Starting in September 2008, the import air passenger fares indexes represent changes in the average revenue per passenger received by foreign carriers from U.S. residents and are calculated from data obtained from an airline consulting service. These data include tickets sold by travel agencies and travel websites. Tickets sold directly by the airlines are excluded, as are frequent flyer tickets generally. Starting in January 2008, the export air passenger fares indexes represent changes in the average revenue per passenger received by U.S. carriers from foreign residents and are calculated from data collected directly from airlines. These data include frequent flyer tickets and those sold by consolidators. Taxes and fees are included in the import air passenger fares indexes and excluded from the export air passenger fares indexes. The air freight indexes are calculated from data collected directly from airlines. These data exclude mail and passenger baggage. The scope of the service being priced is the movement of freight from airport to airport only, and does not include any ground transportation or port service. The air freight indexes are presented using two definitions: balance of payments (which represent transactions between U.S. and foreign residents) and international (which represent transactions inbound to and outbound from the U.S.). Fact sheets specifying detailed information for each services industry are available at [www.bls.gov/mxp](http://www.bls.gov/mxp) under "MXP Publications."

**Import Indexes by Locality of Origin** - Prices used in these indexes are a subset of the data collected for the import price indexes. Beginning with January 2002, the indexes are defined by locality of origin using a nomenclature based upon the North American Industry Classification System (NAICS). Nonmanufactured goods are defined as NAICS 11 and 21, and manufactured goods are defined as NAICS 31-33.

**Revision Policy** - To reflect the availability of late reports and corrections by respondents, monthly data may be revised in each of the 3 months after original publication. After 3 months, no further data revisions take place. For example, data first published in the January release will be subject to revision in the releases for February, March, and April.

**Uses of the Data** - The primary use of the indexes is to deflate trade statistics, notably the foreign trade sector of the National Income and Product Accounts (NIPA) constructed by the Department of Commerce. Other published indexes are useful for general market analysis. For trade in international services, balance of payments indexes are used for deflating NIPA, while international indexes are more appropriate for market analysis. Merchandise and services indexes also can be used to study U.S. competitiveness and to compute price elasticities, and the merchandise import indexes by country or region of origin are useful in terms of trade analysis.

**Email Subscription** - The U.S. import and export price indexes news release is available through an email subscription service at [www.bls.gov/bls/list.htm](http://www.bls.gov/bls/list.htm).

**Additional Information** - More detailed data are available on the Import/Export Price Indexes home page at [www.bls.gov/mxp](http://www.bls.gov/mxp). For import and export price indexes data requests, send an email to [mxpinfo@bls.gov](mailto:mxpinfo@bls.gov).

Information from this release will be made available to sensory impaired individuals upon request.  
Voice phone: (202)-691-5200; Federal Relay Service: 1-(800)-877-8339.