

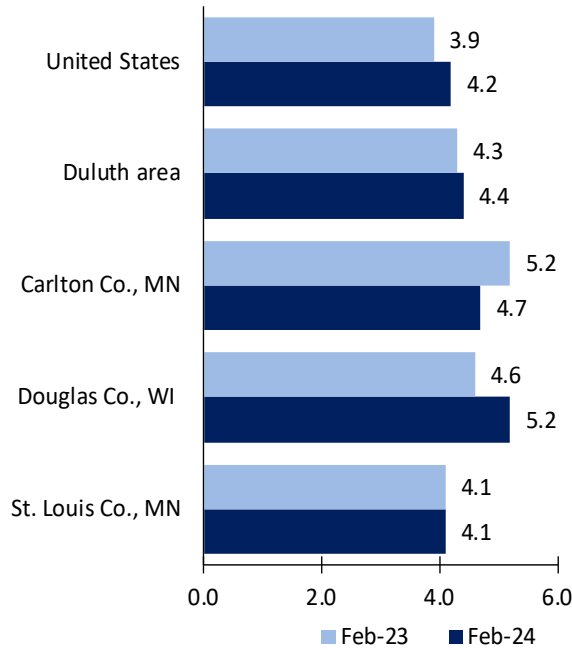
# Duluth Area Economic Summary

Updated April 03, 2024

This summary presents a sampling of economic information for the area; supplemental data are provided for regions and the nation. Subjects include **unemployment, employment, wages, prices, spending, and benefits**. All data are not seasonally adjusted and some may be subject to revision. Area definitions may differ by subject. For more area summaries and geographic definitions, see [www.bls.gov/regions/economic-summaries.htm](http://www.bls.gov/regions/economic-summaries.htm).

## Unemployment rates for the nation and selected areas

Unemployment rates

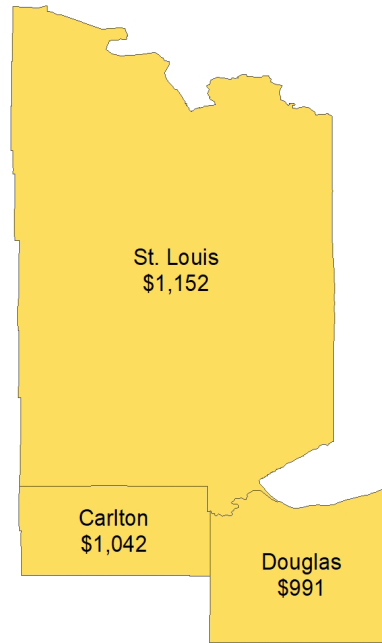


Source: U.S. BLS, Local Area Unemployment Statistics.

## Average weekly wages for all industries by county

### Duluth area, third quarter 2023

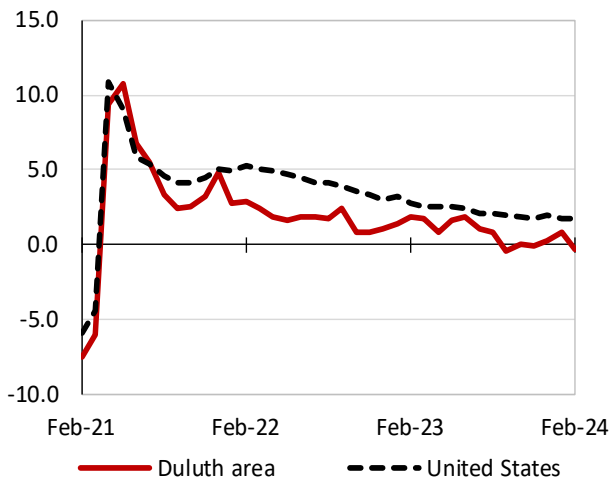
(U.S. = \$1,334; Area = \$1,120)



Source: U.S. BLS, Quarterly Census of Employment and Wages.

## Over-the-year changes in employment on nonfarm payrolls and employment by major industry sector

12-month percent changes in employment



Source: U.S. BLS, Current Employment Statistics.

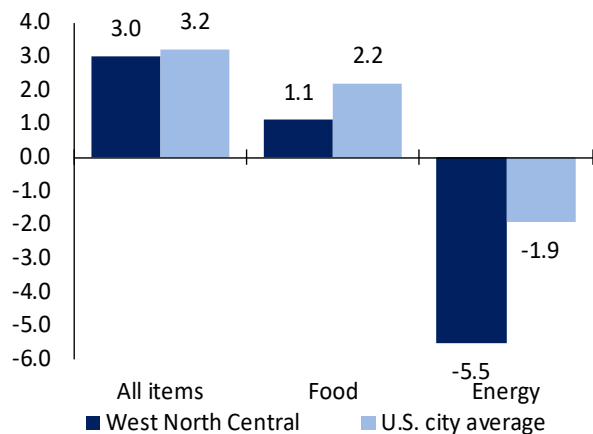
| Duluth area employment<br>(number in thousands) | Feb. 2024 | Change from Feb. 2023 to Feb. 2024 |         |
|---|-----------|------------------------------------|---------|
|   |           | Number                             | Percent |
| Total nonfarm                                   | 130.8     | -0.4                               | -0.3    |
| Mining, logging, and construction               | 8.5       | -0.8                               | -8.6    |
| Manufacturing                                   | 8.3       | 0.0                                | 0.0     |
| Trade, transportation, and utilities            | 24.4      | 0.5                                | 2.1     |
| Information                                     | 1.0       | 0.1                                | 11.1    |
| Financial activities                            | 4.9       | -0.1                               | -2.0    |
| Professional and business services              | 7.5       | -0.1                               | -1.3    |
| Education and health services                   | 31.8      | 0.4                                | 1.3     |
| Leisure and hospitality                         | 13.6      | 0.4                                | 3.0     |
| Other services                                  | 6.4       | 0.5                                | 8.5     |
| Government                                      | 24.4      | -1.3                               | -5.1    |

Source: U.S. BLS, Current Employment Statistics.



Over-the-year change in the prices paid by urban consumers for selected categories

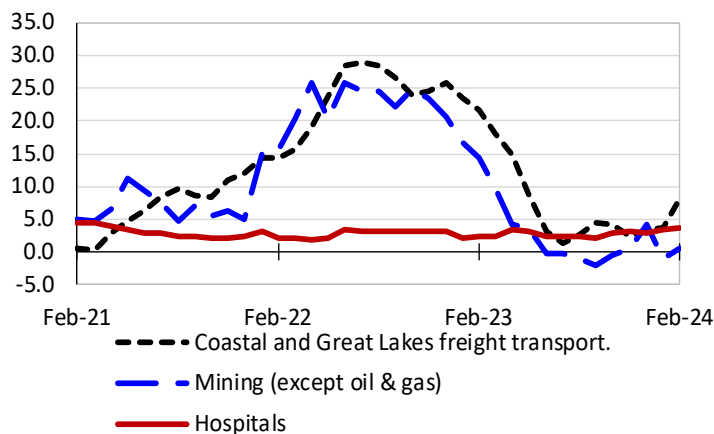
12-month percent change in CPI-U, February 2024



Source: U.S. BLS, Consumer Price Index.

Over-the-year changes in the selling prices received by producers for selected industries nationwide

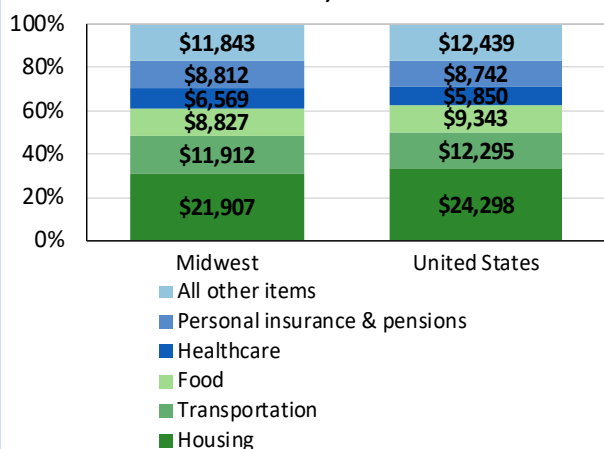
12-month percent changes in PPI



Source: U.S. BLS, Producer Price Index.

Average annual spending and percent distribution for selected categories

Average annual expenditures, United States and Midwest, 2022



Source: U.S. BLS, Consumer Expenditure Survey.

Average hourly wages for selected occupations

| Occupation   | Duluth area | United States |
|--|-------------|---------------|
| All occupations                                    | \$28.13     | \$31.48       |
| Occupational health and safety specialists         | 41.98       | 41.14         |
| Career/technical education teachers, postsecondary | 36.43       | 32.84         |
| Insurance sales agents                             | 34.88       | 38.32         |
| Mental health and substance abuse social workers   | 32.66       | 30.71         |
| Heavy and tractor-trailer truck drivers            | 29.28       | 26.92         |
| Cooks, restaurant                                  | 16.88       | 17.34         |

Source: U.S. BLS, Occupational Employment and Wage Statistics, May 2023.

Employer costs per hour worked for wages and selected employee benefits by geographic division

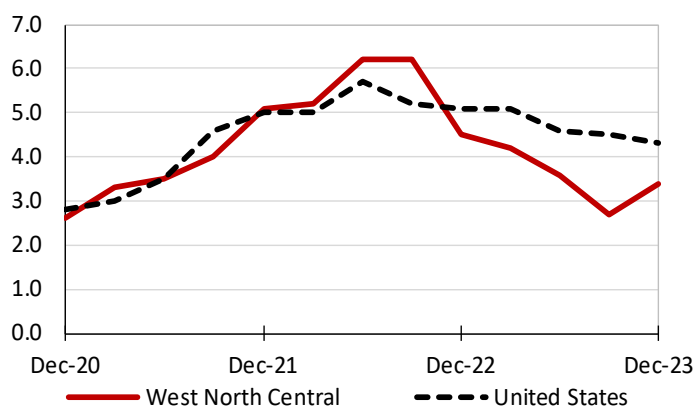
| Private industry, December 2023 | West North Central (1) | United States |
|---------------------------------|------------------------|---------------|
| Total compensation              | \$38.45                | \$43.11       |
| Wages and salaries              | 26.65                  | 30.33         |
| Total benefits                  | 11.80                  | 12.77         |
| Paid leave                      | 2.71                   | 3.26          |
| Vacation                        | 1.43                   | 1.67          |
| Supplemental pay                | 1.71                   | 1.71          |
| Insurance                       | 3.37                   | 3.14          |
| Retirement and savings          | 1.17                   | 1.50          |
| Legally required benefits       | 2.83                   | 3.17          |

(1) The states that compose the West North Central census division are: IA, KS, MN, MO, NE, ND, and SD.

Source: U.S. BLS, Employer Costs for Employee Compensation.

Over-the-year changes in wages and salaries

12-month percent changes in ECI



Source: U.S. BLS, Employment Cost Index.

