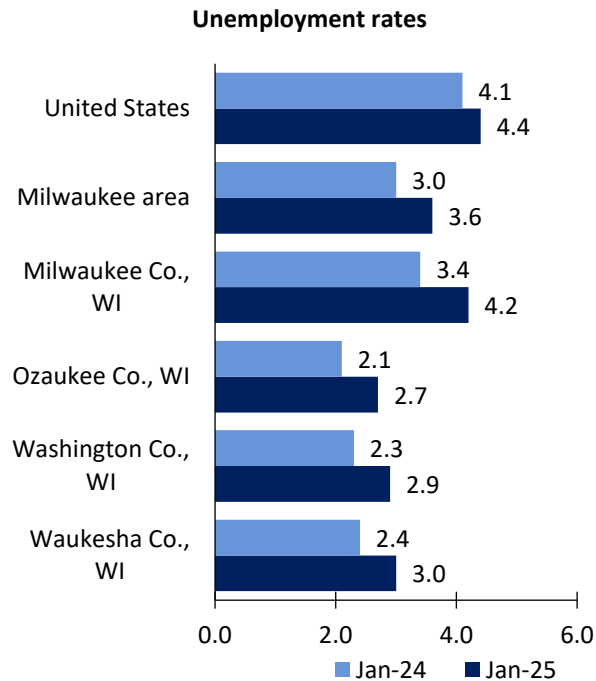


Milwaukee Area Economic Summary

Updated March 25, 2025

This summary presents a sampling of economic information for the area; supplemental data are provided for regions and the nation. Subjects include **unemployment, employment, wages, prices, spending, and benefits**. All data are not seasonally adjusted and some may be subject to revision. Area definitions may differ by subject. For more area summaries and geographic definitions, see <https://www.bls.gov/regions/economic-summaries.htm>.

Unemployment rates for the nation and selected areas

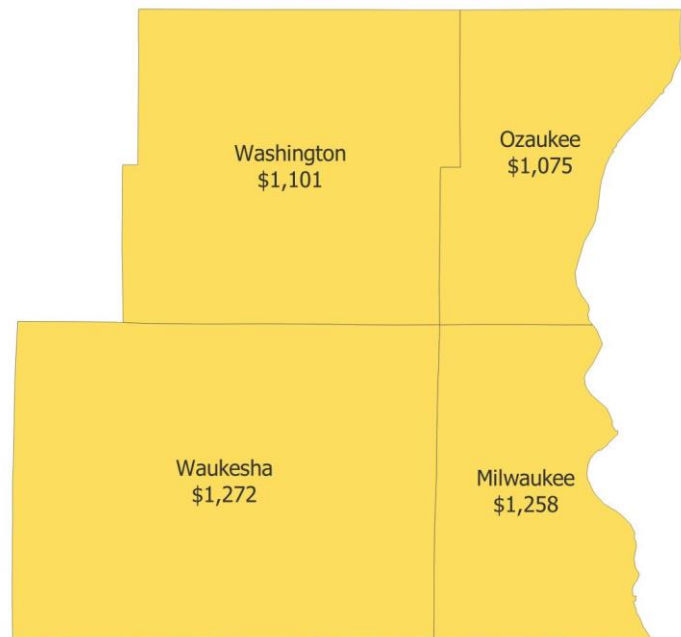


Source: U.S. BLS, Local Area Unemployment Statistics.

Average weekly wages for all industries by county

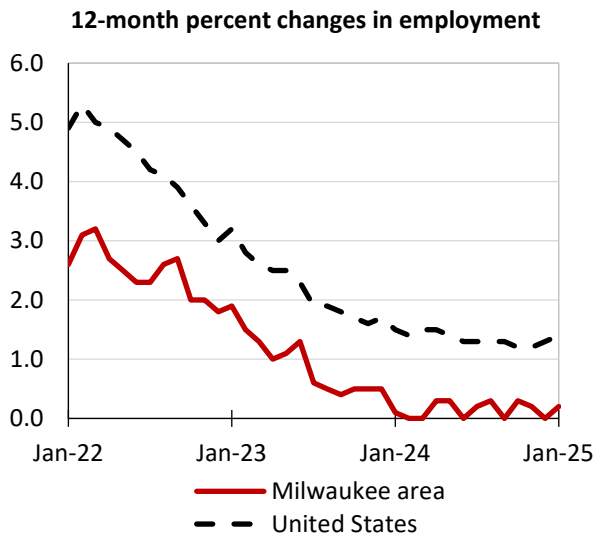
Milwaukee area, third quarter 2024

(U.S. = \$1,394; Area = \$1,242)



Source: U.S. BLS, Quarterly Census of Employment and Wages.

Employment on nonfarm payrolls and employment by major industry sector, over-the-year changes

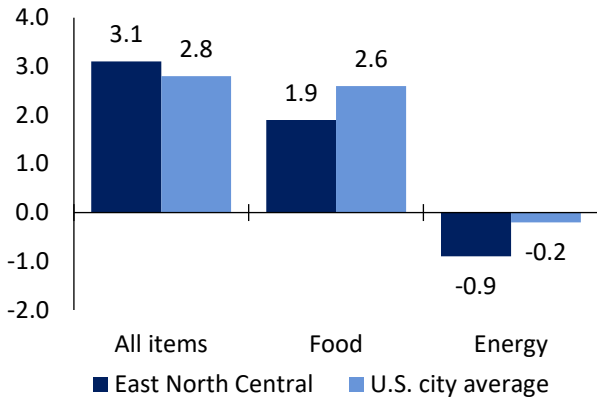


Source: U.S. BLS, Current Employment Statistics.

Milwaukee area employment (number in thousands)	Jan. 2025	Change from Jan. 2024 to Jan. 2025	
		Number	Percent
Total nonfarm	848.8	1.3	0.2
Mining and logging	0.5	0.0	0.0
Construction	34.5	0.1	0.3
Manufacturing	110.7	-2.1	-1.9
Trade, transportation, and utilities	145.1	-2.2	-1.5
Information	11.3	0.0	0.0
Financial activities	47.4	-0.9	-1.9
Professional and business services	118.4	-0.1	-0.1
Education and health services	178.3	3.0	1.7
Leisure and hospitality	76.6	1.1	1.5
Other services	43.8	1.0	2.3
Government	82.2	1.4	1.7

Prices paid by urban consumers for selected categories, over-the-year change

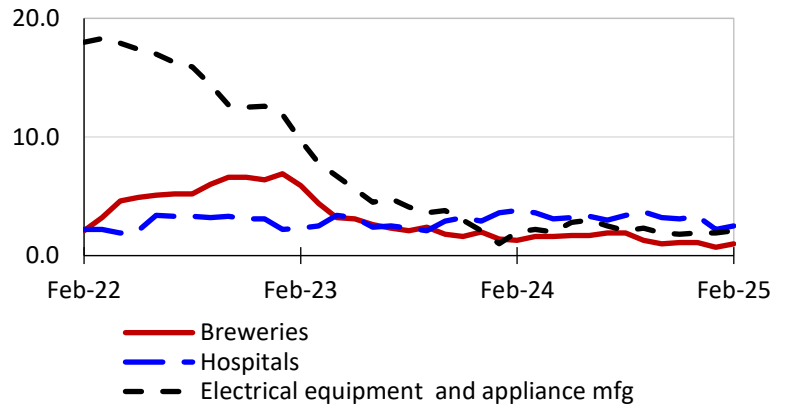
12-month percent change in CPI-U, February 2025



Source: U.S. BLS, Consumer Price Index.

Selling prices received by producers for selected industries nationwide, over-the-year change

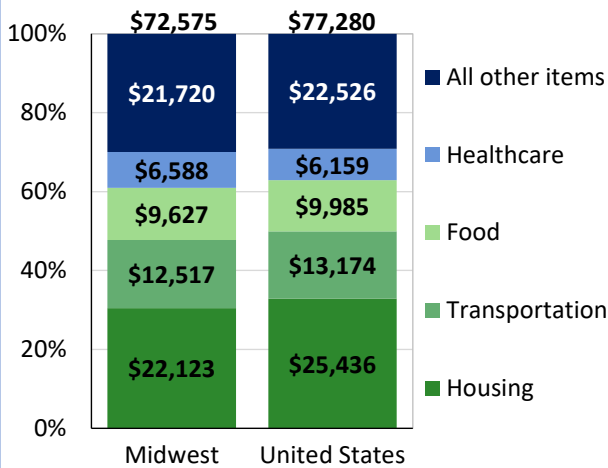
12-month percent changes in PPI



Source: U.S. BLS, Producer Price Index.

Average annual spending and percent distribution for selected categories

Average annual expenditures, 2023



Source: U.S. BLS, Consumer Expenditure Survey.

Average hourly wages for selected occupations, May 2023

Occupation	Milwaukee area	United States
All occupations	\$30.11	\$31.48
Physical therapists	46.22	48.29
Machinists	23.92	26.25
Laborers and freight, stock, and material movers, hand	19.94	19.12
Stockers and order fillers	17.60	18.27
Retail salespersons	17.24	17.64
Bartenders	14.01	17.83

Source: U.S. BLS, Occupational Employment and Wage Statistics.

Employer costs per hour worked for wages and selected employee benefits by geographic division

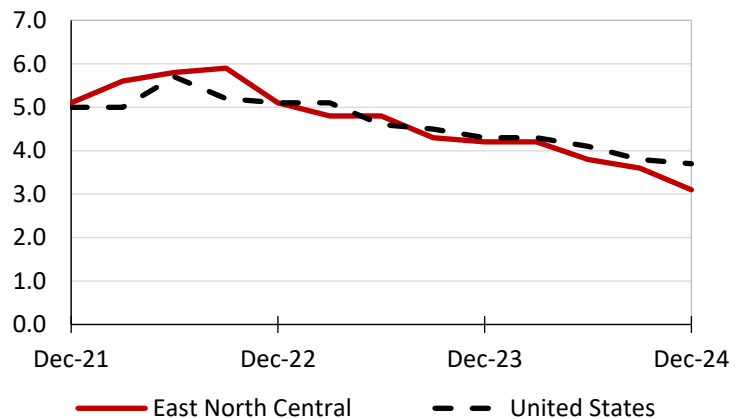
Private industry, December 2024	East North Central	United States
Total compensation	\$42.07	\$44.67
Wages and salaries	29.08	31.47
Total benefits	12.99	13.20
Paid leave	3.04	3.38
Vacation	1.54	1.71
Supplemental pay	2.00	1.84
Insurance	3.34	3.22
Retirement and savings	1.60	1.52
Legally required benefits	3.02	3.24

Map of Census Regions and Divisions

Source: U.S. BLS, Employer Costs for Employee Compensation.

Changes in wages and salaries over-the-year

12-month percent changes in ECI



Source: U.S. BLS, Employment Cost Index.