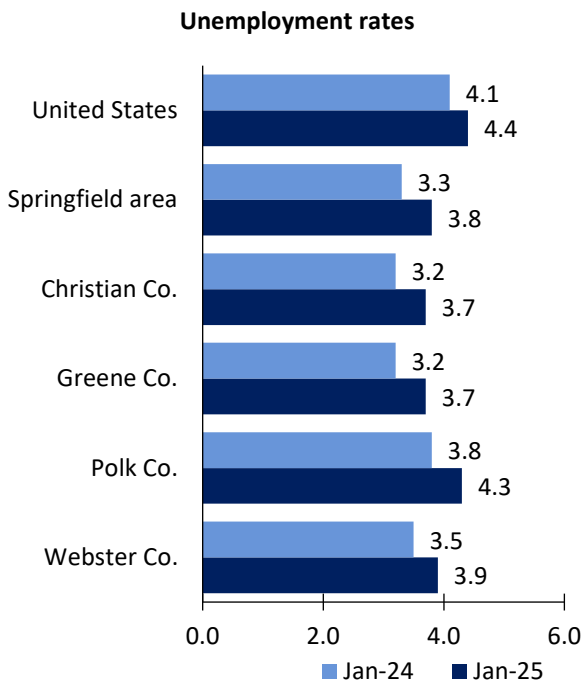


# Springfield, MO Area Economic Summary

Updated March 21, 2025

This summary presents a sampling of economic information for the area; supplemental data are provided for regions and the nation. Subjects include **unemployment, employment, wages, prices, spending, and benefits**. All data are not seasonally adjusted and some may be subject to revision. Area definitions may differ by subject. For more area summaries and geographic definitions, see <https://www.bls.gov/regions/economic-summaries.htm>.

## Unemployment rates for the nation and selected areas



Source: U.S. BLS, Local Area Unemployment Statistics.

## Average weekly wages for all industries by county

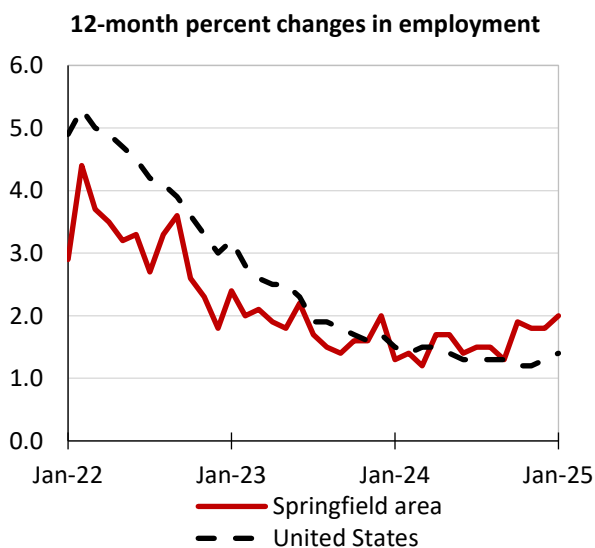
Springfield area, third quarter 2024

(U.S. = \$1,394; Area = \$1,049)



Source: U.S. BLS, Quarterly Census of Employment and Wages.

## Employment on nonfarm payrolls and employment by major industry sector, over-the-year changes



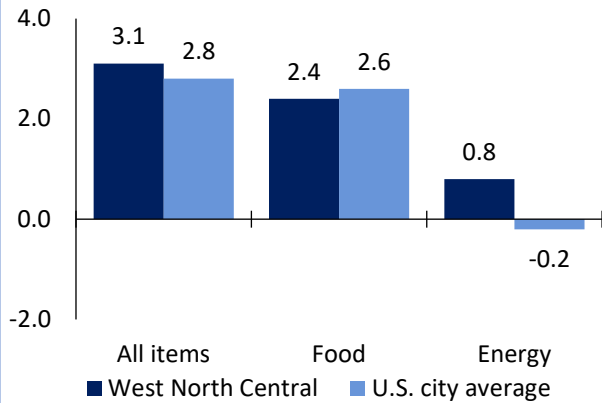
Springfield area employment (number in thousands)	Jan. 2025	Change from Jan. 2024 to Jan. 2025	
		Number	Percent
Total nonfarm	233.6	4.5	2.0
Mining, logging, and construction	11.0	0.3	2.8
Manufacturing	18.9	-0.7	-3.6
Trade, transportation, and utilities	54.1	0.4	0.7
Information	2.4	-0.3	-11.1
Financial activities	12.3	-0.3	-2.4
Professional and business services	25.3	0.0	0.0
Education and health services	50.0	4.2	9.2
Leisure and hospitality	21.4	-0.5	-2.3
Other services	7.2	0.1	1.4
Government	31.0	1.3	4.4

Source: U.S. BLS, Current Employment Statistics.



Prices paid by urban consumers for selected categories, over-the-year change

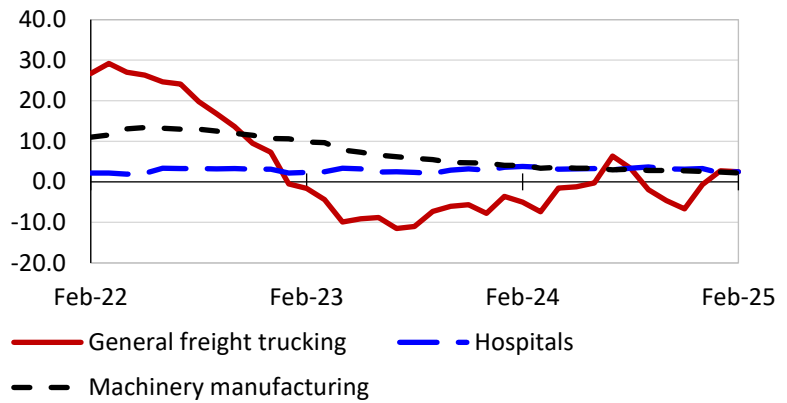
**12-month percent change in CPI-U, February 2025**



Source: U.S. BLS, Consumer Price Index.

Selling prices received by producers for selected industries nationwide, over-the-year change

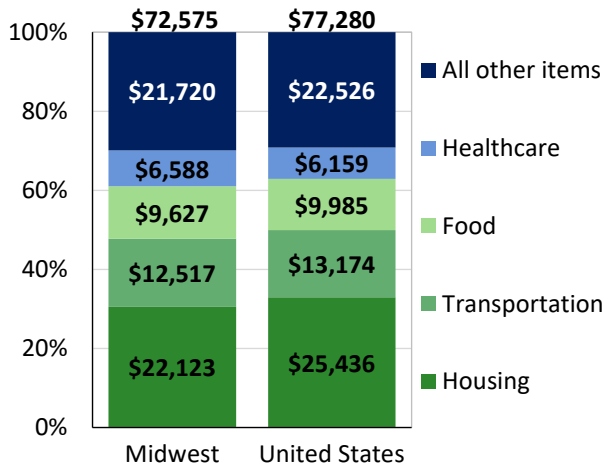
**12-month percent changes in PPI**



Source: U.S. BLS, Producer Price Index.

Average annual spending and percent distribution for selected categories

**Average annual expenditures, 2023**



Source: U.S. BLS, Consumer Expenditure Survey.

Average hourly wages for selected occupations, May 2023

Occupation	Springfield, MO	United States
All occupations	\$25.06	\$31.48
Nurse practitioners	52.91	61.78
General and operations managers	42.26	62.18
Heavy and tractor-trailer truck drivers	27.61	26.92
Computer user support specialists	24.79	30.60
Court, municipal, and license clerks	18.95	23.44
Childcare workers	13.95	15.42

Source: U.S. BLS, Occupational Employment and Wage Statistics

Employer costs per hour worked for wages and selected employee benefits by geographic division

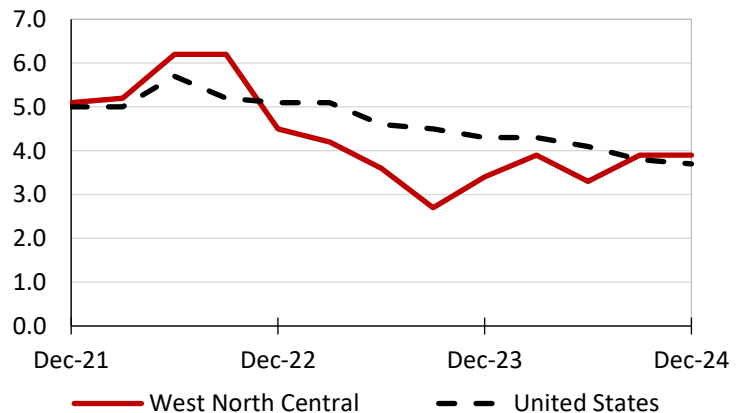
Private industry, December 2024	West North Central	United States
Total compensation	\$39.29	\$44.67
Wages and salaries	27.72	31.47
Total benefits	11.57	13.20
Paid leave	2.78	3.38
Vacation	1.43	1.71
Supplemental pay	1.58	1.84
Insurance	3.17	3.22
Retirement and savings	1.14	1.52
Legally required benefits	2.91	3.24

Map of Census Regions and Divisions

Source: U.S. BLS, Employer Costs for Employee Compensation.

Changes in wages and salaries over-the-year

**12-month percent changes in ECI**



Source: U.S. BLS, Employment Cost Index.