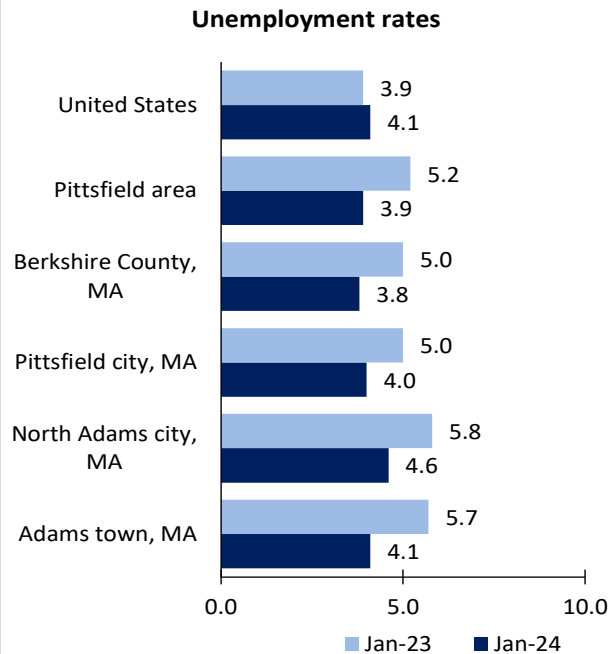


Pittsfield Area Economic Summary

Updated March 14, 2024

This summary presents a sampling of economic information for the area; supplemental data are provided for regions and the nation. Subjects include **unemployment, employment, wages, prices, spending, and benefits**. All data are not seasonally adjusted and some may be subject to revision. Area definitions may differ by subject. For more area summaries and geographic definitions, see www.bls.gov/regions/economic-summaries.htm.

Unemployment rates for the nation and selected areas

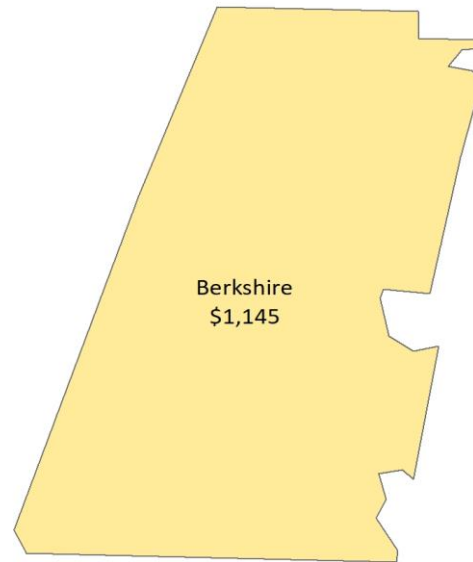


Source: U.S. BLS, Local Area Unemployment Statistics.

Average weekly wages for all industries by county

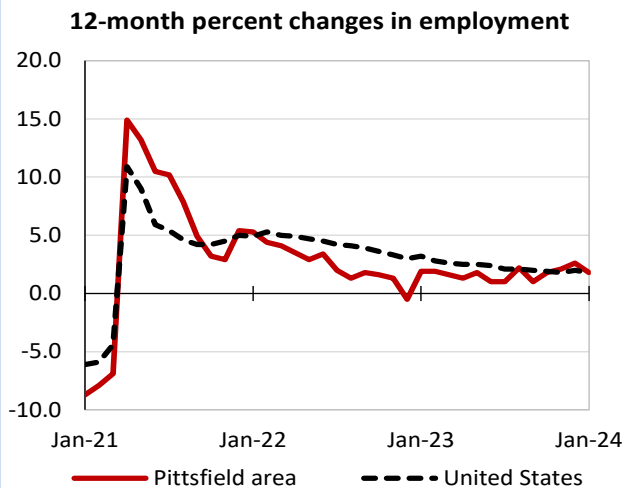
Pittsfield area, third quarter 2023

(U.S. = \$1,334; Area = \$1,145)



Source: U.S. BLS, Quarterly Census of Employment and Wages.

Over-the-year changes in employment on nonfarm payrolls and employment by major industry sector



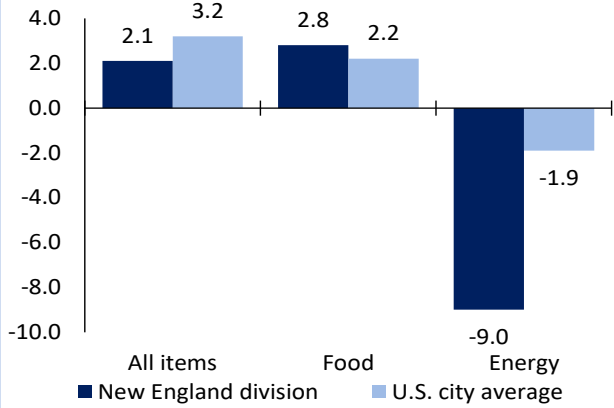
Source: U.S. BLS, Current Employment Statistics.

| Pittsfield area employment (number in thousands) | Jan. 2024 | Change from Jan. 2023 to Jan. 2024 | |
|---|-----------|------------------------------------|---------|
| | | Number | Percent |
| Total nonfarm | 39.2 | 0.7 | 1.8 |
| Mining, logging, and construction | 1.9 | 0.0 | 0.0 |
| Manufacturing | 2.7 | -0.1 | -3.6 |
| Trade, transportation, and utilities | 7.0 | 0.1 | 1.4 |
| Information | 0.6 | 0.0 | 0.0 |
| Financial activities | 1.9 | 0.1 | 5.6 |
| Professional and business services | 4.2 | 0.0 | 0.0 |
| Education and health services | 9.2 | 0.4 | 4.5 |
| Leisure and hospitality | 4.4 | 0.1 | 2.3 |
| Other services | 1.6 | 0.0 | 0.0 |
| Government | 5.7 | 0.1 | 1.8 |

Source: U.S. BLS, Current Employment Statistics.

Over-the-year change in the prices paid by urban consumers for selected categories

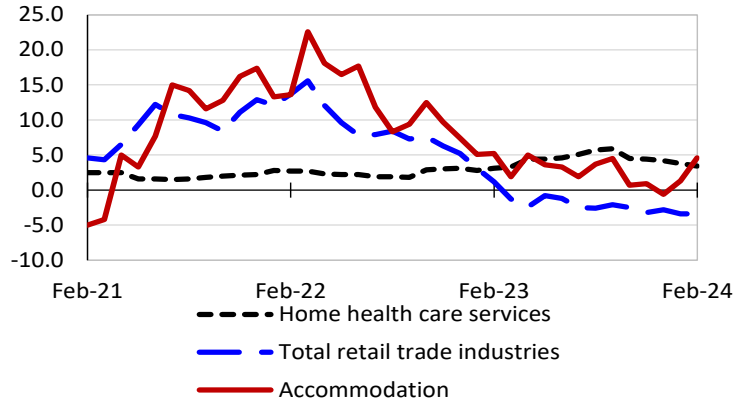
12-month percent change in CPI-U, February 2024



Source: U.S. BLS, Consumer Price Index.

Over-the-year changes in the selling prices received by producers for selected industries nationwide

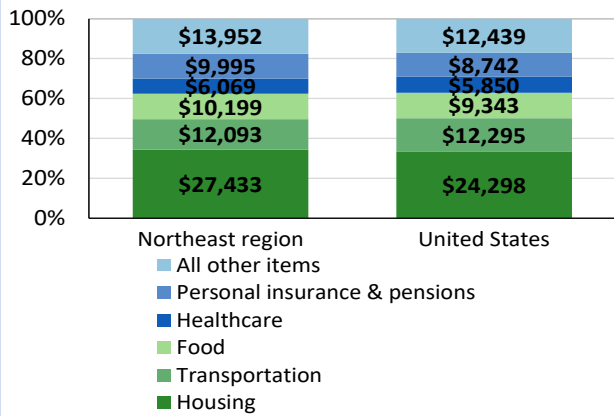
12-month percent changes in PPI



Source: U.S. BLS, Producer Price Index.

Average annual spending and percent distribution for selected categories

Average annual expenditures, United States and Northeast region, 2022



Source: U.S. BLS, Consumer Expenditure Survey.

Average hourly wages for selected occupations

| Occupation | Pittsfield area | United States |
|---------------------------------|-----------------|---------------|
| All occupations | \$29.12 | \$29.76 |
| General and operations managers | 55.71 | 59.07 |
| Registered nurses | 45.55 | 42.80 |
| Nursing assistants | 18.15 | 17.41 |
| Retail salespersons | 17.23 | 16.70 |
| Cashiers | 15.48 | 13.81 |
| Fast food and counter workers | 15.30 | 13.53 |

Source: U.S. BLS, Occupational Employment and Wage Statistics, May 2022.

Employer costs per hour worked for wages and selected employee benefits by geographic division

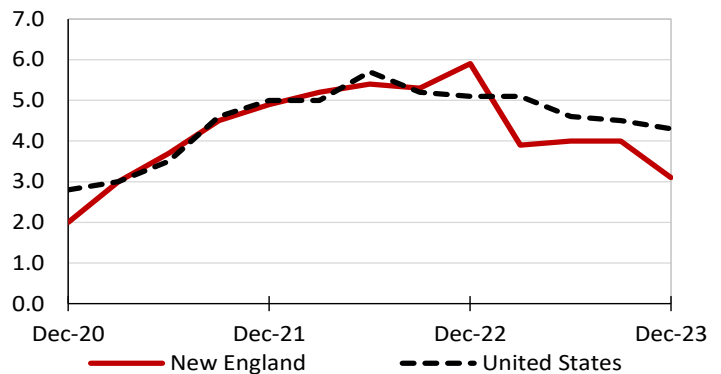
| Private industry, December 2023 | New England (1) | United States |
|---------------------------------|-----------------|---------------|
| Total compensation | \$51.73 | \$43.11 |
| Wages and salaries | 35.15 | 30.33 |
| Total benefits | 16.58 | 12.77 |
| Paid leave | 4.24 | 3.26 |
| Vacation | 2.18 | 1.67 |
| Supplemental pay | 2.71 | 1.71 |
| Insurance | 4.04 | 3.14 |
| Retirement and savings | 1.96 | 1.50 |
| Legally required benefits | 3.64 | 3.17 |

(1) The states that compose the New England census division are: CT, ME, MA, NH, RI, and VT.

Source: U.S. BLS, Employer Costs for Employee Compensation.

Over-the-year changes in wages and salaries

12-month percent changes in ECI



Source: U.S. BLS, Employment Cost Index.

