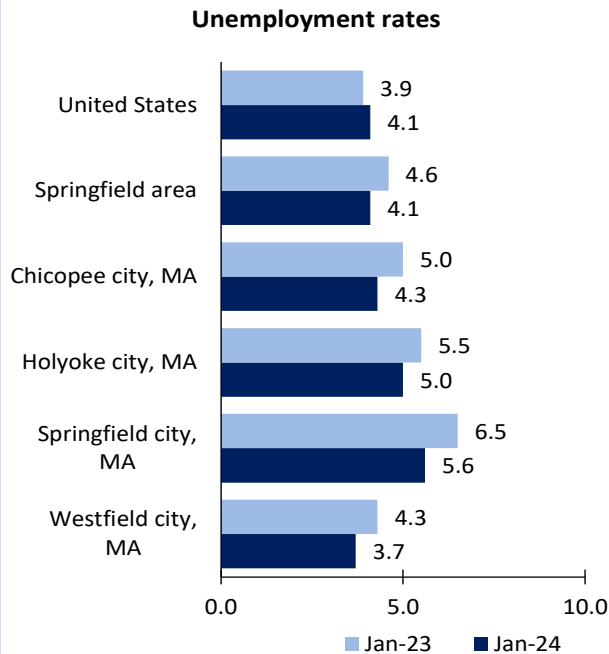


# Springfield, MA, Area Economic Summary

Updated March 14, 2024

This summary presents a sampling of economic information for the area; supplemental data are provided for regions and the nation. Subjects include **unemployment, employment, wages, prices, spending, and benefits**. All data are not seasonally adjusted and some may be subject to revision. Area definitions may differ by subject. For more area summaries and geographic definitions, see [www.bls.gov/regions/economic-summaries.htm](http://www.bls.gov/regions/economic-summaries.htm).

## Unemployment rates for the nation and selected areas

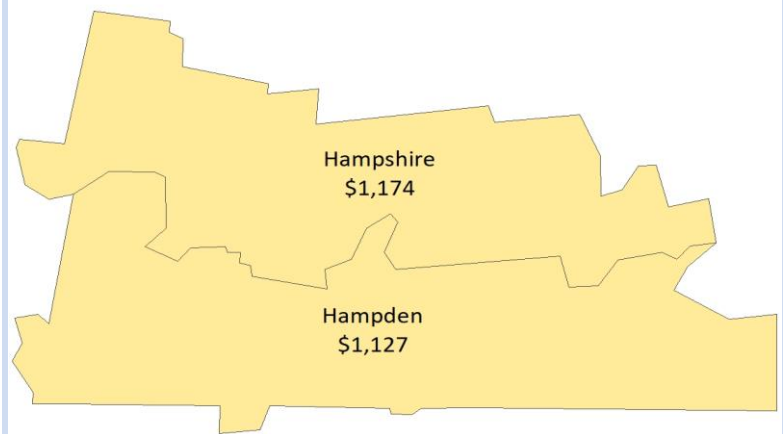


Source: U.S. BLS, Local Area Unemployment Statistics.

## Average weekly wages for all industries by county

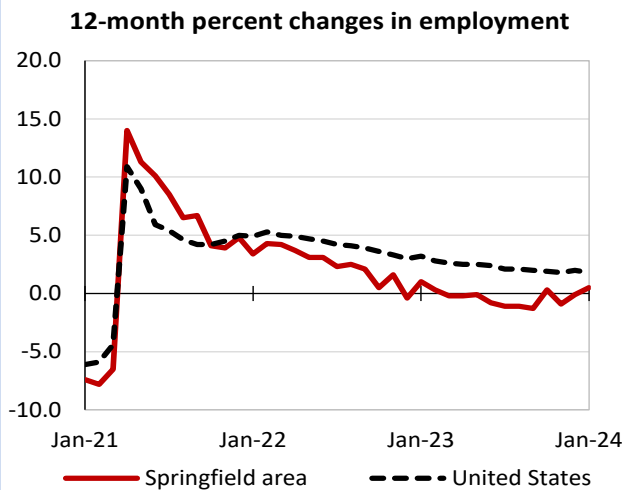
### Springfield area, third quarter 2023

(U.S. = \$1,334; Area = \$1,138)



Source: U.S. BLS, Quarterly Census of Employment and Wages.

## Over-the-year changes in employment on nonfarm payrolls and employment by major industry sector



Source: U.S. BLS, Current Employment Statistics.

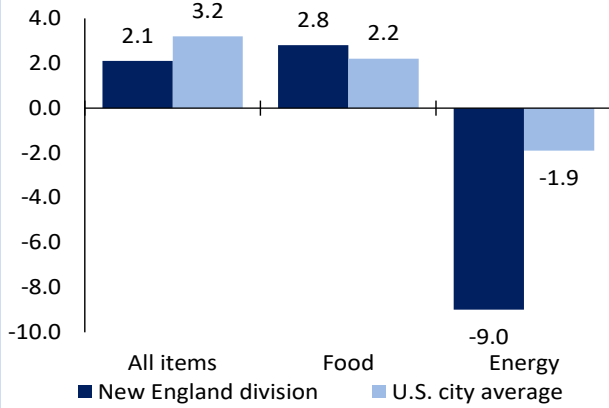
Springfield area employment (number in thousands)	Jan. 2024	Change from Jan. 2023 to Jan. 2024	
		Number	Percent
Total nonfarm	324.1	1.6	0.5
Mining, logging, and construction	11.3	0.4	3.7
Manufacturing	27.8	-0.5	-1.8
Trade, transportation, and utilities	57.6	-0.8	-1.4
Information	2.7	-0.2	-6.9
Financial activities	13.8	-0.5	-3.5
Professional and business services	23.9	0.9	3.9
Education and health services	84.4	1.7	2.1
Leisure and hospitality	27.5	-0.4	-1.4
Other services	12.5	0.4	3.3
Government	62.6	0.6	1.0

Source: U.S. BLS, Current Employment Statistics.



Over-the-year change in the prices paid by urban consumers for selected categories

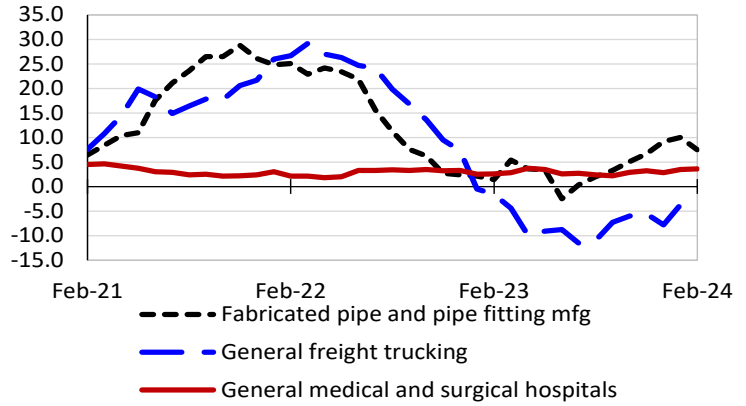
12-month percent change in CPI-U, February 2024



Source: U.S. BLS, Consumer Price Index.

Over-the-year changes in the selling prices received by producers for selected industries nationwide

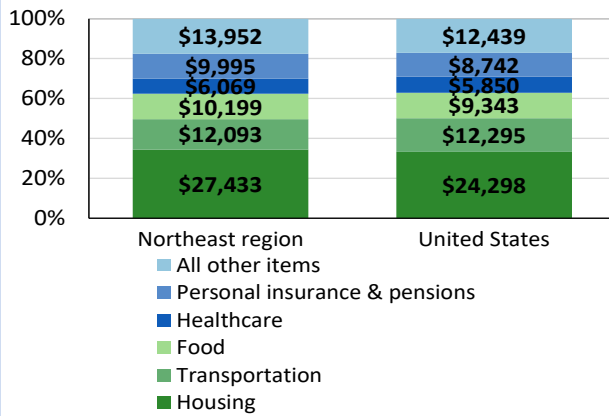
12-month percent changes in PPI



Source: U.S. BLS, Producer Price Index.

Average annual spending and percent distribution for selected categories

Average annual expenditures, United States and Northeast region, 2022



Source: U.S. BLS, Consumer Expenditure Survey.

Average hourly wages for selected occupations

Occupation	Springfield area	United States
All occupations	\$29.50	\$29.76
General and operations managers	57.97	59.07
Bus drivers, transit and intercity	23.47	25.92
Customer service representatives	21.19	19.80
Waiters and waitresses	18.32	15.87
Retail salespersons	17.78	16.70
Cashiers	15.51	13.81

Source: U.S. BLS, Occupational Employment and Wage Statistics, May 2022.

Employer costs per hour worked for wages and selected employee benefits by geographic division

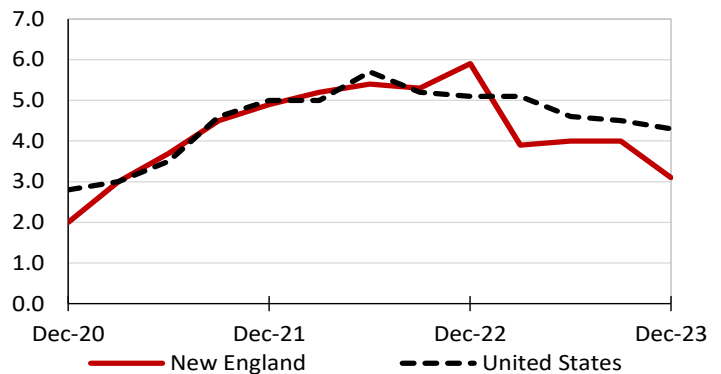
Private industry, December 2023	New England (1)	United States
Total compensation	\$51.73	\$43.11
Wages and salaries	35.15	30.33
Total benefits	16.58	12.77
Paid leave	4.24	3.26
Vacation	2.18	1.67
Supplemental pay	2.71	1.71
Insurance	4.04	3.14
Retirement and savings	1.96	1.50
Legally required benefits	3.64	3.17

(1) The states that compose the New England census division are: CT, ME, MA, NH, RI, and VT.

Source: U.S. BLS, Employer Costs for Employee Compensation.

Over-the-year changes in wages and salaries

12-month percent changes in ECI



Source: U.S. BLS, Employment Cost Index.

