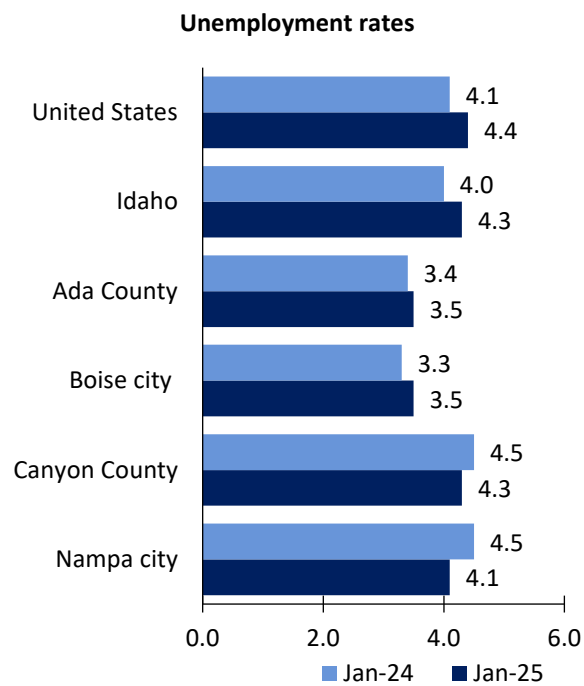


Boise City Area Economic Summary

Updated March 24, 2025

This summary presents a sampling of economic information for the area; supplemental data are provided for regions and the nation. Subjects include **unemployment, employment, wages, prices, spending, and benefits**. All data are not seasonally adjusted and some may be subject to revision. Area definitions may differ by subject. For more area summaries and geographic definitions, see <https://www.bls.gov/regions/economic-summaries.htm>.

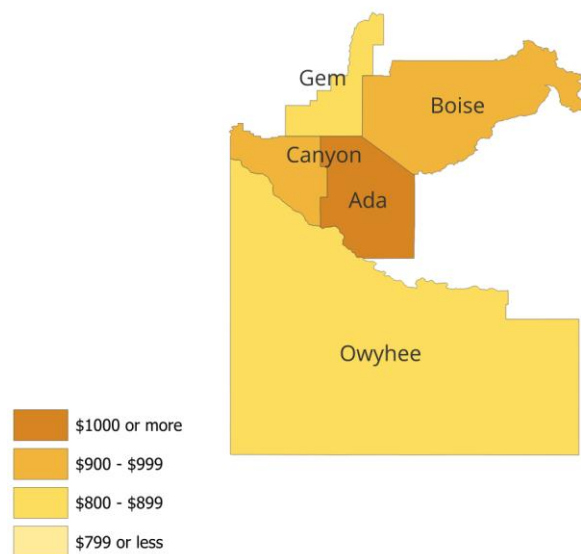
Unemployment rates for the nation and selected areas



Source: U.S. BLS, Local Area Unemployment Statistics.

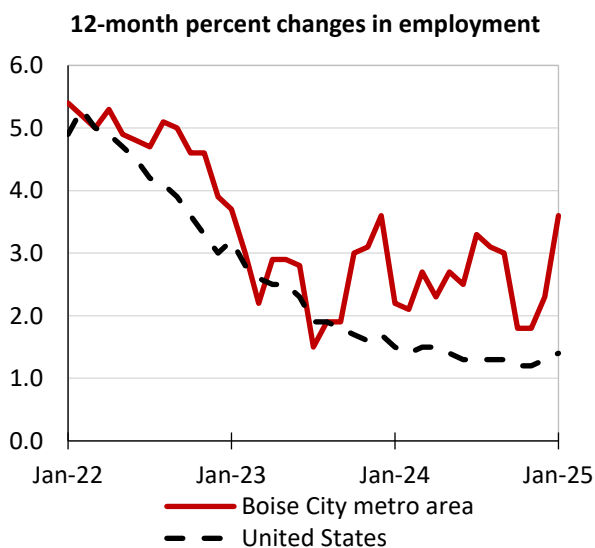
Average weekly wages for all industries by county

Boise City metro area, third quarter 2024
(U.S. = \$1,394; Area = \$1,225)



Source: U.S. BLS, Quarterly Census of Employment and Wages.

Employment on nonfarm payrolls and employment by major industry sector, over-the-year changes



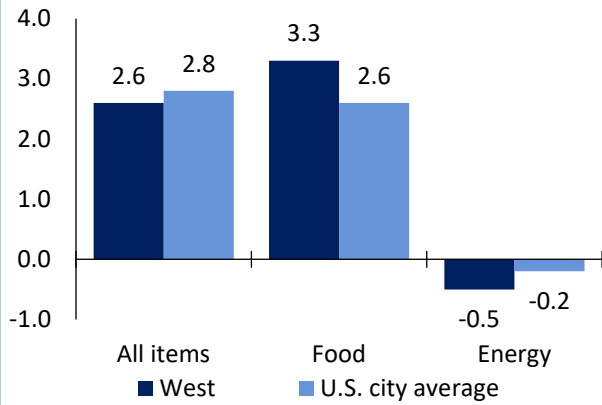
| Boise City metro area employment (number in thousands) | Jan. 2025 | Change from Jan. 2024 to Jan. 2025 | |
|-----------------------------------------------------------|-----------|---------------------------------------|---------|
| | | Number | Percent |
| Total nonfarm | 406.4 | 14.3 | 3.6 |
| Mining, logging, and construction | 38.1 | 4.4 | 13.1 |
| Manufacturing | 31.4 | 0.8 | 2.6 |
| Trade, transportation, and utilities | 77.9 | 1.2 | 1.6 |
| Information | 4.6 | -0.2 | -4.2 |
| Financial activities | 23.6 | 1.2 | 5.4 |
| Professional and business services | 57.6 | -0.9 | -1.5 |
| Education and health services | 65.4 | 4.2 | 6.9 |
| Leisure and hospitality | 39.3 | 0.2 | 0.5 |
| Other services | 14.5 | 1.0 | 7.4 |
| Government | 54.0 | 2.4 | 4.7 |

Source: U.S. BLS, Current Employment Statistics.



Prices paid by urban consumers for selected categories, over-the-year change

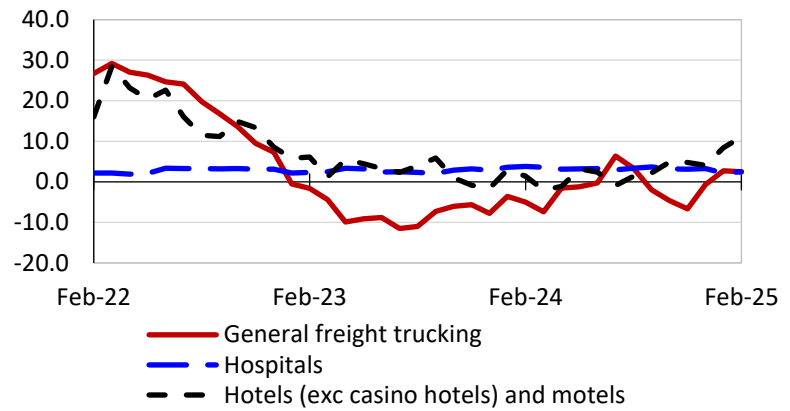
12-month percent change in CPI-U, February 2025



Source: U.S. BLS, Consumer Price Index.

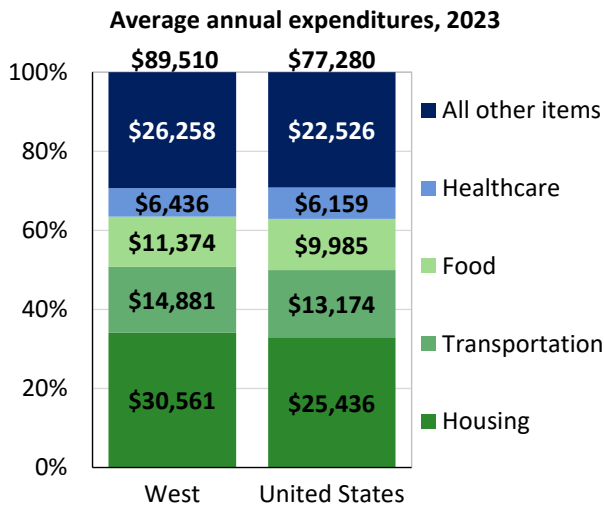
Selling prices received by producers for selected industries nationwide, over-the-year change

12-month percent changes in PPI



Source: U.S. BLS, Producer Price Index.

Average annual spending and percent distribution for selected categories



Source: U.S. BLS, Consumer Expenditure Survey.

Average hourly wages for selected occupations, May 2023

| Occupation | Boise City metro area | United States |
|--------------------------|-----------------------|---------------|
| All occupations | \$28.07 | \$31.48 |
| Financial managers | 63.43 | 84.05 |
| Human resources managers | 59.91 | 74.39 |
| Registered nurses | 41.82 | 45.42 |
| Accountants and auditors | 33.98 | 43.65 |
| Construction laborers | 21.66 | 23.69 |
| Cooks, restaurant | 15.89 | 17.34 |

Source: U.S. BLS, Occupational Employment and Wage Statistics

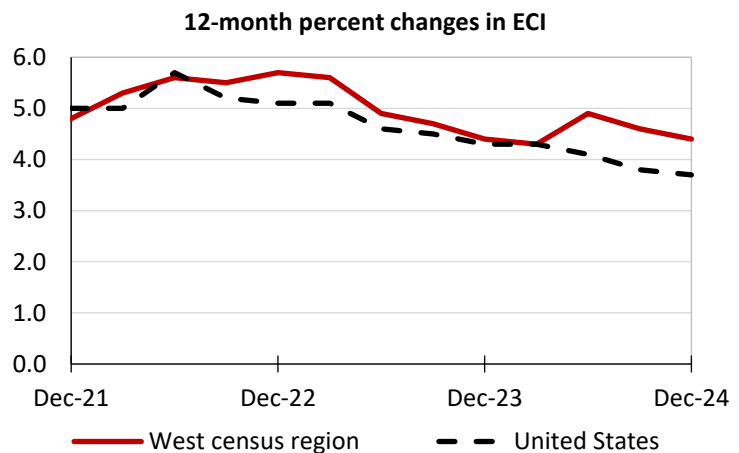
Employer costs per hour worked for wages and selected employee benefits by geographic division

| Private industry, December 2024 | West census region | United States |
|---------------------------------|--------------------|---------------|
| Total compensation | \$48.73 | \$44.67 |
| Wages and salaries | 34.40 | 31.47 |
| Total benefits | 14.33 | 13.20 |
| Paid leave | 3.73 | 3.38 |
| Vacation | 1.85 | 1.71 |
| Supplemental pay | 2.02 | 1.84 |
| Insurance | 3.26 | 3.22 |
| Retirement and savings | 1.63 | 1.52 |
| Legally required benefits | 3.69 | 3.24 |

Map of Census Regions and Divisions

Source: U.S. BLS, Employer Costs for Employee Compensation.

Changes in wages and salaries over-the-year



Source: U.S. BLS, Employment Cost Index.