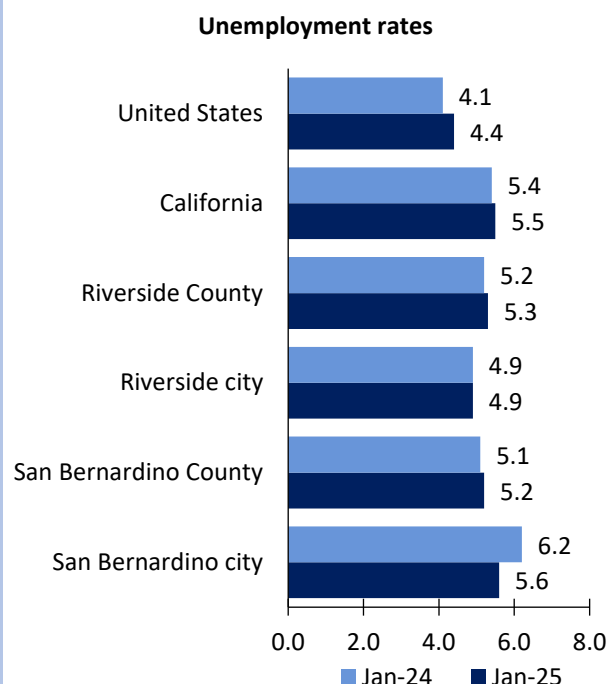


Riverside Area Economic Summary

Updated March 24, 2025

This summary presents a sampling of economic information for the area; supplemental data are provided for regions and the nation. Subjects include **unemployment, employment, wages, prices, spending, and benefits**. All data are not seasonally adjusted and some may be subject to revision. Area definitions may differ by subject. For more area summaries and geographic definitions, see <https://www.bls.gov/regions/economic-summaries.htm>.

Unemployment rates for the nation and selected areas

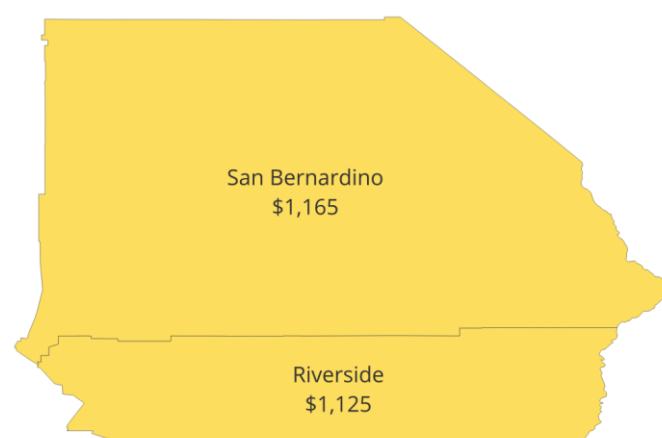


Source: U.S. BLS, Local Area Unemployment Statistics.

Average weekly wages for all industries by county

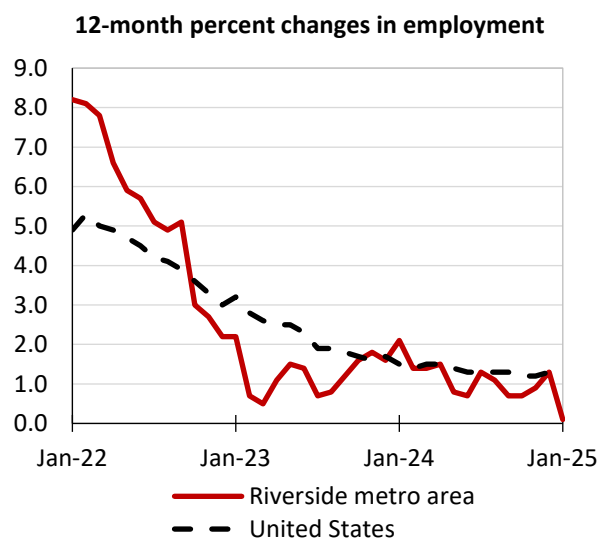
Riverside metro area, third quarter 2024

(U.S. = \$1,394; Area = \$1,145)



Source: U.S. BLS, Quarterly Census of Employment and Wages.

Employment on nonfarm payrolls and employment by major industry sector, over-the-year changes

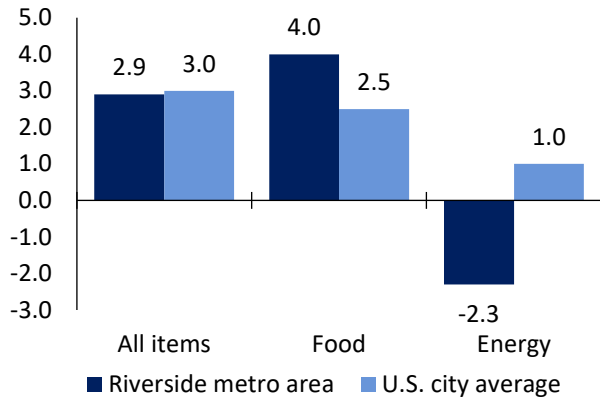


Riverside metro area employment (number in thousands)	Jan. 2025	Change from Jan. 2024 to Jan. 2025	
		Number	Percent
Total nonfarm	1,701.6	2.5	0.1
Mining and logging	1.5	-0.1	-6.3
Construction	109.1	-6.5	-5.6
Manufacturing	93.1	-3.1	-3.2
Trade, transportation, and utilities	461.3	-0.3	-0.1
Information	13.0	-0.2	-1.5
Financial activities	43.6	-1.2	-2.7
Professional and business services	159.6	-2.5	-1.5
Education and health services	314.3	18.2	6.1
Leisure and hospitality	178.6	-10.6	-5.6
Other services	49.4	-1.2	-2.4
Government	278.1	10.0	3.7

Source: U.S. BLS, Current Employment Statistics.

Prices paid by urban consumers for selected categories, over-the-year change

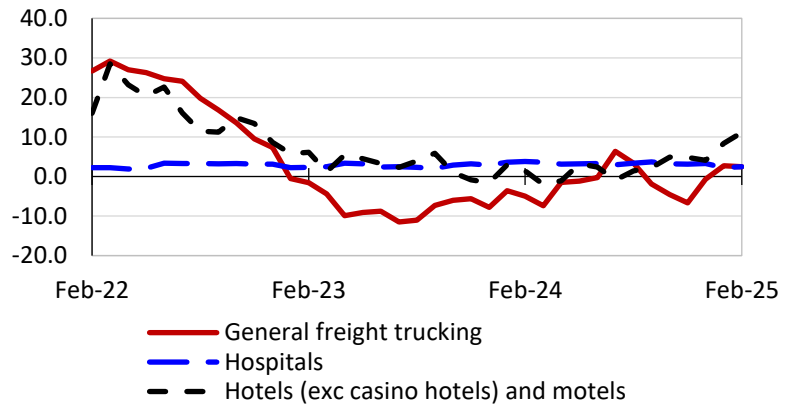
12-month percent change in CPI-U, January 2025



Source: U.S. BLS, Consumer Price Index.

Selling prices received by producers for selected industries nationwide, over-the-year change

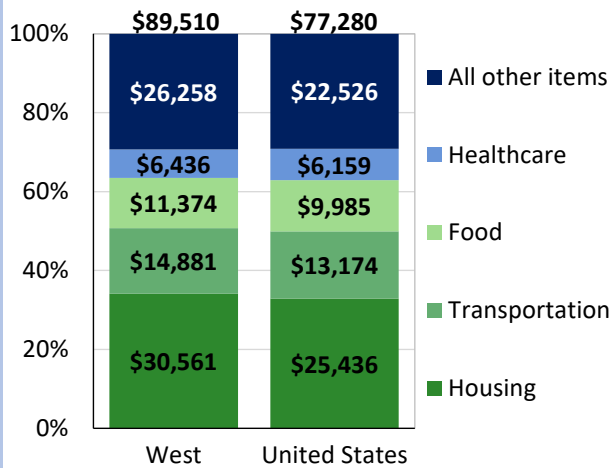
12-month percent changes in PPI



Source: U.S. BLS, Producer Price Index.

Average annual spending and percent distribution for selected categories

Average annual expenditures, 2023



Source: U.S. BLS, Consumer Expenditure Survey.

Average hourly wages for selected occupations, May 2023

Occupation	Riverside metro area	United States
All occupations	\$29.77	\$31.48
Human resources managers	70.25	74.39
Registered nurses	62.17	45.42
Accountants and auditors	41.99	43.65
Electricians	36.71	32.60
Chefs and head cooks	31.51	30.12
Construction laborers	28.91	23.69

Source: U.S. BLS, Occupational Employment and Wage Statistics.

Employer costs per hour worked for wages and selected employee benefits by geographic division

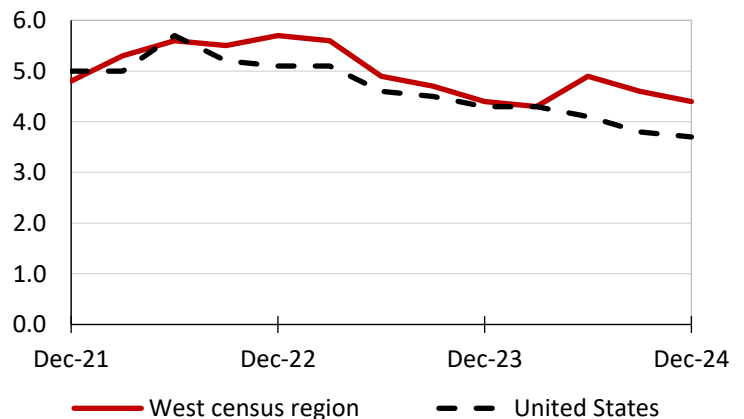
Private industry, December 2024	West census region	United States
Total compensation	\$48.73	\$44.67
Wages and salaries	34.40	31.47
Total benefits	14.33	13.20
Paid leave	3.73	3.38
Vacation	1.85	1.71
Supplemental pay	2.02	1.84
Insurance	3.26	3.22
Retirement and savings	1.63	1.52
Legally required benefits	3.69	3.24

Map of Census Regions and Divisions

Source: U.S. BLS, Employer Costs for Employee Compensation.

Changes in wages and salaries over-the-year

12-month percent changes in ECI



Source: U.S. BLS, Employment Cost Index.